



Boise Police Department Statistical Summary

Calendar Year 2014

Overview

Reports

Operations **1**

Crime **3**

Traffic **6**

Domestic Violence **8**

Mental Health **9**

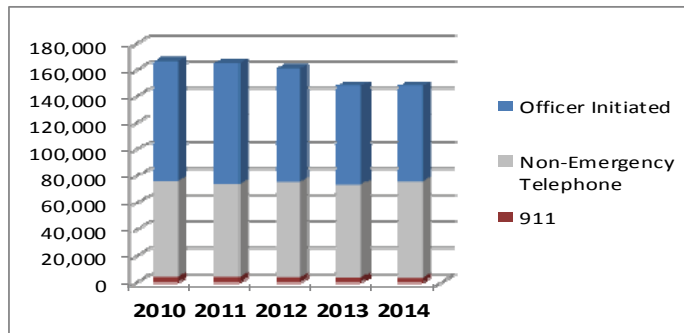
Operations Report

Calls for Service

Prepared by the
Crime Analysis Unit,
3/12/2015

	2010	2011	2012	2013	2014	2013-2014 %change
Total Calls for Service	166,237	164,924	161,062	148,173	148,093	-0.1%
<i>Total Public Initiated CFS</i>	<i>75,993</i>	<i>73,828</i>	<i>75,434</i>	<i>73,402</i>	<i>75,613</i>	<i>3.0%</i>
<i>911</i>	<i>4,074</i>	<i>4,002</i>	<i>3,719</i>	<i>3,516</i>	<i>3,161</i>	<i>-10.1%</i>
Non-Emergency Telephone	71,919	69,826	71,715	69,886	72,452	3.7%
Officer Initiated	90,244	91,096	85,628	74,771	72,480	-3.1%
Average Response Time (Dispatch to Arrival)*	8.24	8.04	8.31	8.37	8.52	1.8%
Priority 3	3.57	3.37	3.50	3.58	3.80	6.1%
Priority 2	8.25	8.35	8.57	6.92	7.13	3.0%
Priority 1	12.91	12.40	12.88	11.00	10.90	-0.9%

*As of 2013, a new methodology is being used to calculate average response time in order to mitigate reporting errors and improve statistical accuracy



Public Initiated Calls for Service by Priority:

	2010	2011	2012	2013	2014	2013-2014 %change
Total Public Initiated	73,643	71,835	71,944	72,454	74,595	3.0%
% Public Initiated to Total	45.0%	44.2%	46.1%	49.3%	50.7%	
1	28,218	27,355	27,980	27,424	28,456	3.8%
2	43,321	42,601	42,164	43,230	44,415	2.7%
3	2,104	1,879	1,800	1,800	1,724	-4.2%

Officer Initiated Calls for Service by Priority:

	2010	2011	2012	2013	2014	2013-2014 %change
Total Officer Initiated	89,845	90,830	84,205	74,549	72,409	-2.9%
% Officer Initiated to Total	55.0%	55.8%	53.9%	50.7%	49.3%	
1	21,574	23,465	22,511	21,305	21,357	0.2%
2	68,133	67,197	61,541	53,122	50,915	-4.2%
3	138	168	153	122	137	12.3%



Operations Report

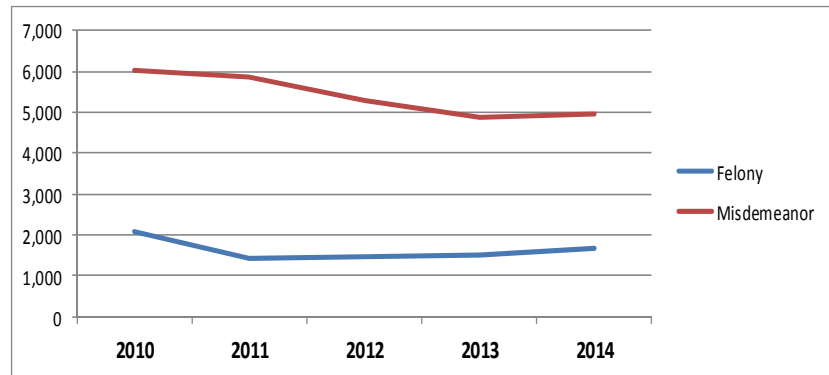
DRs, Arrests, and Citations

Top 20 Public Calls for Service

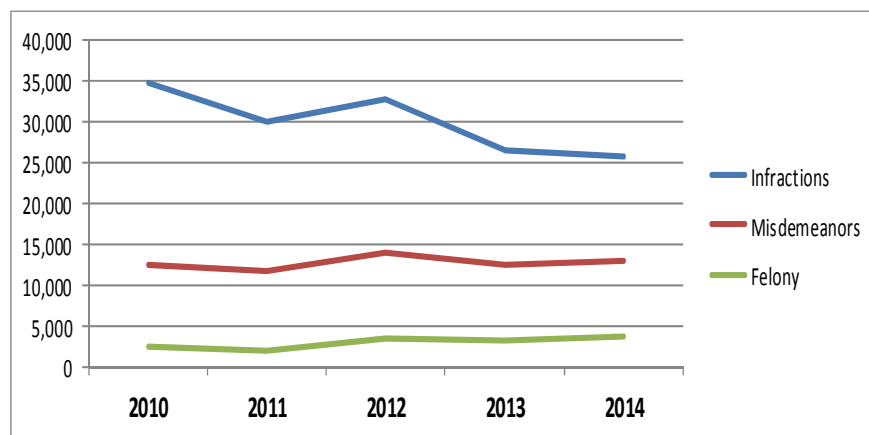
Call Description	Count
Welfare Check	4725
Accident - Non-injury	4090
Burglary Alarm	2900
Citizen's Assist	2291
Theft Report	2192
Reckless Driver Attempt to Locate	1800
Check for Suspicious Subject	1755
Drunk Driver attempt to locate	1624
Check for Suspicious Vehicle	1604
Problem w/ Subject	1584
Welfare Check/911 Hang Up	1390
Fraud Report	1216
Traffic Hazard	1199
Noise Complaint	1192
10-17 Ref Suicide Subject	1098
Supplemental Information	1097
Domestic Violence Physical	1067
Abandoned Vehicle	963
Problem w/ DK Subject	959
Domestic Violence Verbal	915

	2010	2011	2012	2013	2014	2013-2014 %change
# of Reports Written	33,452	31,515	30,407	29,238	28,458	-2.7%

Jail Arrests (charges)	2010	2011	2012	2013	2014	2013-2014 %change
Felony	2,083	1,437	1,446	1,523	1,663	9.2%
Misdemeanor	6,017	5,843	5,282	4,880	4,967	1.8%



	2010	2011	2012	2013	2014	2013-2014 %change
Total Citations/Cases	49,488	43,747	50,077	42,836	42,594	-0.6%
Infractions	34,680	30,034	32,721	26,452	25,873	-2.2%
Misdemeanors	12,443	11,690	13,902	12,873	12,965	0.7%
Felony	2,365	2,023	3,454	3,511	3,756	7.0%

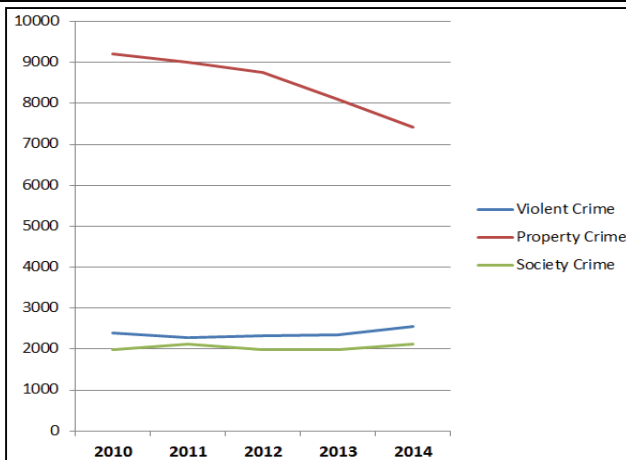




Crime Report

Group A Index Crimes

	2010	2011	2012	2013	2014	2013-2014 %change	2014 Cleared	% Cleared
Murder Total	3	1	2	3	4	33.3%	4	100.0%
Rape Total	105	84	108	100	102	2.0%	20	19.6%
Robbery Total	60	60	65	44	58	31.8%	21	36.2%
Aggravated Assault Total	333	330	380	368	412	12.0%	231	56.1%
Domestic	25	28	26	43	48	11.6%	40	83.3%
Attempted Strangulation	47	59	65	82	86	4.9%	65	75.6%
Injury to Child	21	15	18	17	6	-64.7%	3	50.0%
Law Enforcement Officer	10	3	6	4	5	25.0%	5	100.0%
All Other	230	225	265	222	267	20.3%	118	44.2%
Burglary Total	856	818	915	815	710	-12.9%	52	7.3%
Commercial	198	208	246	214	133	-37.9%	15	11.3%
Residential	658	610	669	601	577	-4.0%	43	7.5%
Theft Total	4675	4497	4376	3807	3714	-2.4%	578	21.1%
Pocket Picking	8	5	5	9	3	-66.7%	0	0.0%
Purse Snatching	2	2	5	11	2	-81.8%	0	0.0%
Shoplifting	1018	988	941	671	753	12.2%	485	64.4%
From Building	937	1014	947	624	509	-18.4%	93	18.3%
From Coin-op Machine	4	4	5	9	0	-100.0%	0	0.0%
From Motor Vehicle, and Parts	1443	1153	1196	1004	912	-9.2%	40	4.4%
All Other	1263	1331	1277	1479	1535	3.8%	137	8.9%
Motor Vehicle Theft Total	174	174	170	179	207	15.6%	45	21.7%
Arson Total	52	55	55	49	47	-4.1%	8	17.0%
Part 1 / Group A Subtotal	6,258	6,019	6,071	5,365	5,254	-2.1%	959	17.9%



Persons Crimes: murder, assaults, robbery, rape

Society Crimes: drug offenses, prostitution, gambling, obscene material

Property Crimes: burglary, theft, fraud, arson, vandalism, stolen property



Crime Report

Group A, Part 2

Other Reported Group A Crimes (IBR)	2010	2011	2012	2013	2014	2013-2014 %change	2014 Cleared	% Cleared
Sexual Assault (Not Rape)	97	143	138	126	160	27.0%	28	22.2%
Forcible Sodomy	30	38	34	19	18	-5.3%	3	16.7%
Sex Asslt W/ Object	20	20	24	34	44	29.4%	11	25.0%
Forcible Fondling	47	85	80	73	98	34.2%	19	19.4%
Sexual Assault (No Force)	26	19	16	14	22	57.1%	8	36.4%
Incest	1	0	5	4	6	50.0%	2	33.3%
Statutory Rape	25	19	11	10	16	60.0%	4	25.0%
Assault / Battery	1,515	1,395	1,366	1,451	1,448	-0.2%	720	49.7%
Domestic	517	395	364	502	457	-9.0%	367	80.3%
Injury to Child	63	73	74	77	106	37.7%	55	51.9%
Law Enforcement Officer	34	39	41	42	55	31.0%	53	96.4%
All Other	901	888	887	830	830	0.0%	479	57.7%
Intimidation / Stalking	233	231	230	230	312	35.7%	89	28.5%
Kidnapping / Enticement	26	22	20	22	25	13.6%	16	64.0%
Porno/Obscene Material	17	29	25	19	23	21.1%	9	39.1%
Prostitution Offenses	6	0	8	9	12	33.3%	6	50.0%
Forgery & Counterfeiting	246	166	185	224	141	-37.1%	26	18.4%
Fraud	815	817	976	1,032	1,141	10.6%	101	8.9%
False Pretense/Swindle	263	246	269	230	238	3.5%	53	22.3%
Credit Card / ATM	440	405	400	510	479	-6.1%	51	10.6%
Impersonation	102	154	284	257	377	46.7%	28	7.4%
Wire	10	12	23	35	47	34.3%	3	6.4%
Embezzlement	59	54	34	14	31	121.4%	11	35.5%
Extortion/Blackmail	3	3	9	11	4	-63.6%	0	0.0%
Bribery	0	0	1	0	0	0.0%	0	0.0%
Gambling Offenses	1	1	0	5	0	-100.0%	0	0.0%
Vandalism Total	2,251	2,365	1,977	1,898	1,395	-26.5%	195	14.0%
Graffiti	789	1,060	613	449	258	-42.5%	4	1.6%
Damaged Property	1,462	1,305	1,364	1,449	1,137	-21.5%	176	15.5%
Drug Violations	1,072	1,123	1,044	1,083	1,186	9.5%	946	79.8%
Drug Paraphernalia	712	771	764	767	767	0.0%	693	90.4%
Stolen Property Offenses	67	45	51	74	30	-59.5%	11	36.7%
Weapon Law Violations	180	191	149	114	123	7.9%	97	78.9%
Part 2 /Group A Subtotal	7,326	7,375	6,993	7,093	6,820	-3.8%	2,956	43.3%
IBR Group A Totals	13,584	13,394	13,064	12,458	12,074	-3.1%	3,915	32.4%

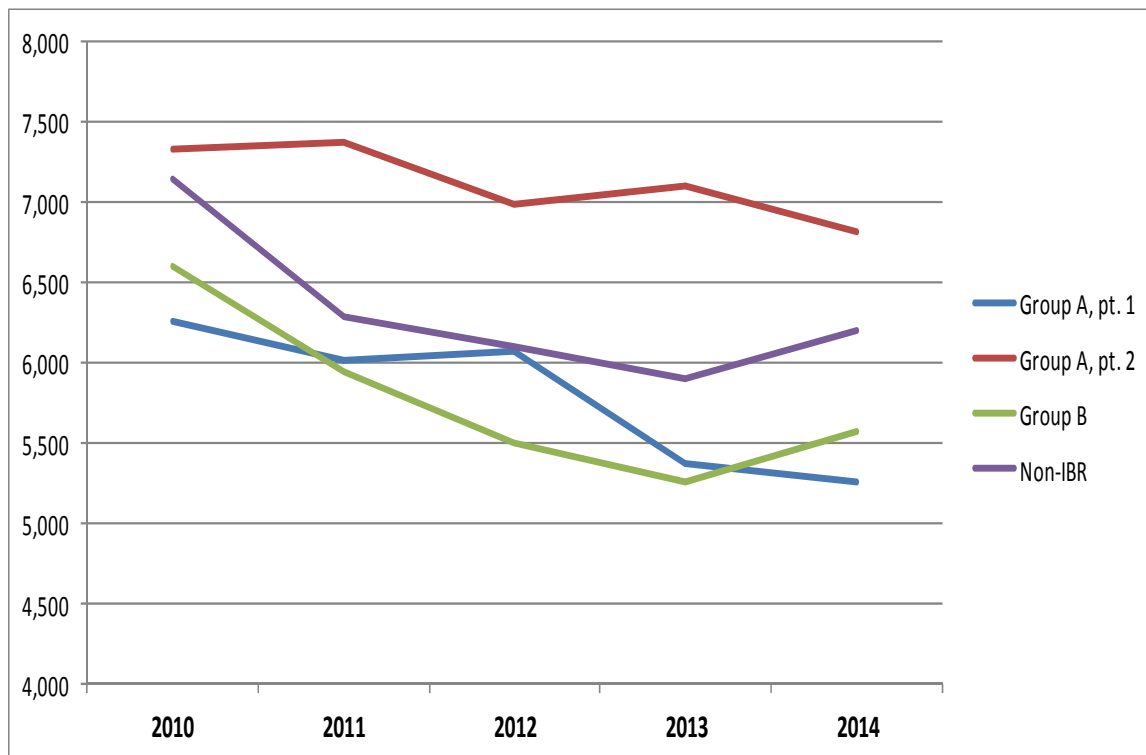


Crime Report

Group B

Group B Crimes	2010	2011	2012	2013	2014	2013-2014 %change	2014 Cleared	% Cleared
Bad Checks	40	44	34	54	56	3.7%	7	12.5%
Curfew / Loitering	38	43	47	49	27	-44.9%	25	92.6%
Disorderly Conduct	464	457	434	393	345	-12.2%	240	69.6%
DUI	1,520	1,371	1,167	1,064	1,054	-0.9%	1,019	96.7%
Drunkenness	154	202	156	115	101	-12.2%	98	97.0%
Family Offenses (Nonviolent)	126	108	97	120	138	15.0%	56	40.6%
Liquor Law Violations	483	463	435	410	437	6.6%	417	95.4%
Peeping Tom	6	11	9	8	4	-50.0%	1	25.0%
Runaway	334	266	318	216	301	39.4%	259	86.0%
Trespassing	286	309	368	355	412	16.1%	236	57.3%
All Other Offenses	3,136	2,662	2,435	2,474	2,696	9.0%	1,780	66.0%
Group B Crime Subtotal	6,587	5,936	5,500	5,258	5,571	6.0%	4,138	74.3%
Group A and B Subtotal	20,171	19,330	18,564	17,716	17,645	-0.4%	8,053	45.6%
Traffic Offenses (non-accident)	2,811	2,072	1,958	1,924	1,957	1.7%	1,524	77.9%
Other Non-IBR Offenses	4,336	4,218	4,147	3,972	4,248	6.9%	1,037	24.4%
Non-IBR Subtotal	7,147	6,290	6,105	5,896	6,205	5.2%	2,561	41.3%
Grand Total	27,318	25,620	24,669	23,612	23,850	1.0%	10,614	44.5%

Overall Crime Trends



Top 10 Traffic Offenses



Traffic

Crashes and Injuries

Exceeding Speed Limit	9683
Safety Restraint - Fail to Use	5000
Insurance - Fail to Provide	4887
Following too Closely	1061
Fail to Register Vehicle	870
Driving Without Privileges	544
Fail to Obey Traffic Control Device	512
Driver's License Violation	439
Turning Left - Fail to Yield	300
Inattentive Driving	268

All Crash Events

	2010	2011	2012	2013	2014	2013-2014 %change
Fatality	5	5	4	8	7	-12.5%
Incapacitating Injury	124	140	136	132	127	-3.8%
Non-Incapacitating Injury	341	360	459	494	501	1.4%
Possible Injury	699	630	654	740	776	4.9%
Property Damage	1911	1871	1909	2130	1551	-27.2%
*Non-Reportable	216	217	177	189	882	366.7%
Total	3296	3223	3339	3693	3844	4.1%

*ITD has not finalized its statistics for 2014; many unevaluated crash incidents appear as "non-reportable"

Motorcycles and Scooters (subset of all crash events)

Fatality	0	3	1	2	2	0.0%
Incapacitating Injury	22	20	18	19	15	-21.1%
Non-Incapacitating Injury	31	25	25	42	22	-47.6%
Possible Injury	16	20	15	10	10	0.0%
Property Damage	7	9	9	17	7	-58.8%
Non-Reportable	1	3	4	3	8	166.7%
Total	77	80	72	93	64	-31.2%

Top 10 Contributing Circumstances

Following Too Closely	897
Failed to Yield	653
Inattention	457
Speeding too Fast for Conditions	241
Failed to Obey Signal	208
Improper Lane Change	153
Improper Turn	133
Alcohol Impaired	108
Failed to Maintain Lane	104
Improper Backing	74

Bicycles (subset of all crash events)

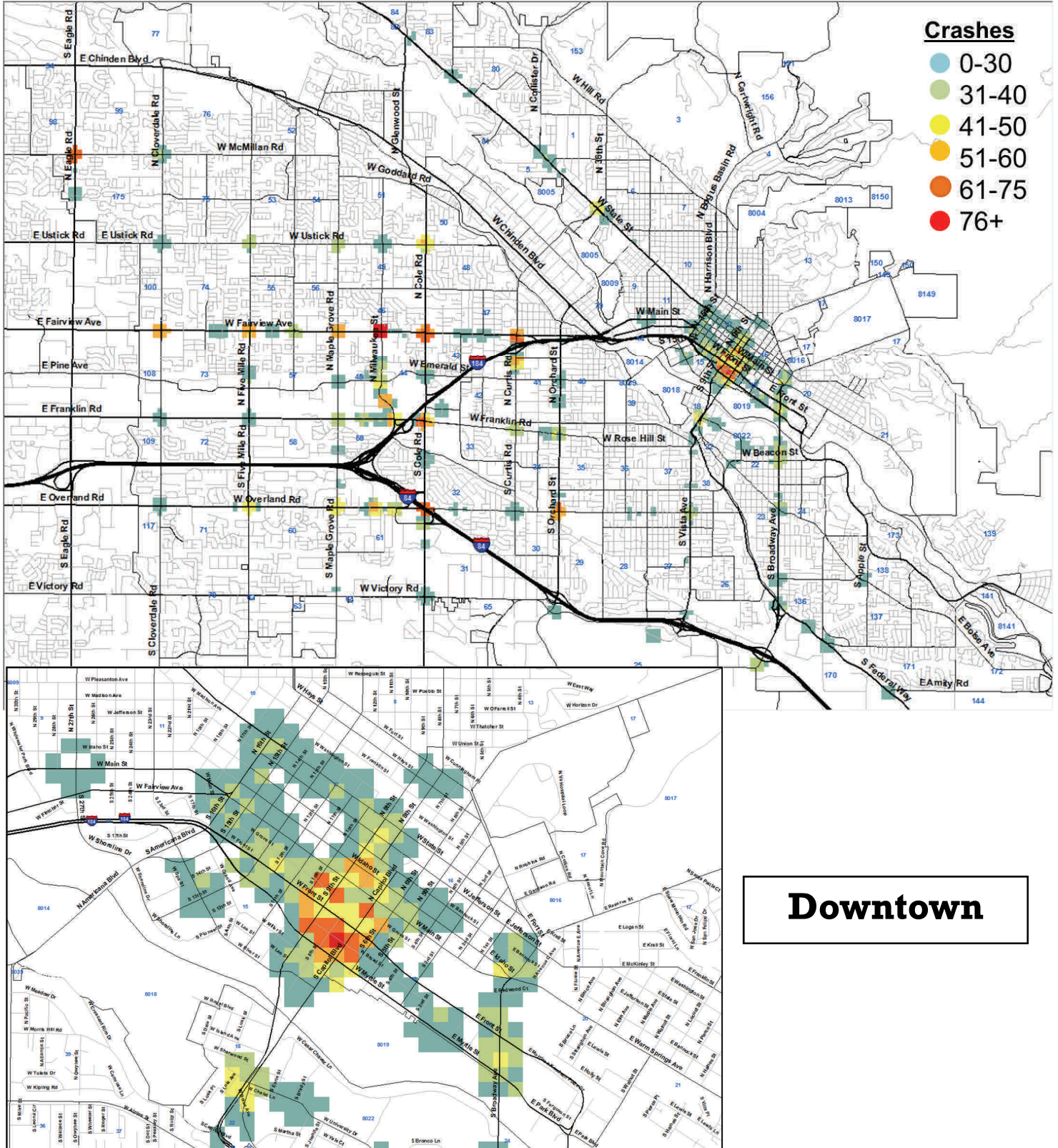
Fatality	0	0	0	2	1	-50.0%
Incapacitating Injury	17	15	21	18	21	16.7%
Non-Incapacitating Injury	67	67	91	66	55	-16.7%
Possible Injury	46	56	36	38	41	7.9%
Property Damage	5	2	7	5	1	-80.0%
Non-Reportable	5	12	6	10	10	0.0%
Total	140	152	161	139	129	-7.2%

Pedestrians (subset of all crash events)

Fatality	1	0	0	3	2	-33.0%
Incapacitating Injury	11	17	7	12	18	50.0%
Non-Incapacitating Injury	15	25	19	30	31	3.3%
Possible Injury	13	17	11	16	14	-12.5%
Property Damage	0	1	1	0	1	100.0%
Non-Reportable	2	1	3	4	4	0.0%
Total	42	61	41	65	70	7.7%



Crash Density
1050PD, 1050PI, 1057





Domestic Violence

Reports and Calls for Service

Felony Offenses:	2010	2011	2012	2013	2014	2013-2014 %Difference
Domestic Aggravated Battery/Strangulation	70	87	91	114	125	9.6%
Domestic Violence Child Present	4	3	10	13	5	-61.5%
Domestic Violence Victim Pregnant	2	1	1	1	1	0.0%
Total DV Felony Offenses:	102	76	91	128	131	2.3%
Misdemeanor Offenses:	2010	2011	2012	2013	2014	2013-2014 %Difference
Domestic Simple Battery	413	409	371	386	323	-16.3%
Domestic Violence Child Present	103	70	81	108	127	17.6%
Domestic Violence Child Present/victim pregnant	2	2	1	1	4	300.0%
Domestic Violence Victim Pregnant	12	8	3	8	3	-62.5%
Total DV Misdemeanor Offenses:	525	536	530	489	457	-6.5%
Total DV Offenses:	627	612	621	617	588	-4.7%

Other Offenses:	2010	2011	2012	2013	2014	2013-2014 %Difference
Stalking	70	67	61	71	104	46.5%
Domestic Assault	8	7	8	14	12	-14.3%
Sexual Assault	97	143	138	126	159	26.2%
Sexual Assault (Statutory Rape/Incest)	22	19	16	14	23	64.3%
Destruction of a Telecommunication Device	24	20	31	23	27	17.4%

**Not limited to domestic*

Domestic Violence & Other Calls for Service Statistics:

	2010	2011	2012	2013	2014	2013-2014 %Difference
Domestic Battery Report	147	144	162	181	166	-8.3%
Domestic Physical	1221	1114	1108	1147	1116	-2.7%
Domestic Threat	67	51	63	48	51	6.3%
Domestic Verbal	1070	952	962	982	996	1.4%
Family Fight	420	458	460	459	472	2.8%
No Contact Order Violation	262	220	223	274	262	-4.4%
PO Violation	100	91	76	72	82	13.9%
Sexual Assault	254	274	249	265	272	2.6%
Total DV Calls for Service	3541	3304	3303	3428	3417	-0.3%



Mental Health

Reports and Calls for Service

Calls for Service	2005	2006	2007	2008	2009	2010	2011	2012	2013	2014	2013-2014 % Change
Mental Hold	198	92	96	71	69	58	109	65	73	69	-5.8%
Attempted Suicide	60	44	75	61	58	61	65	70	91	62	-46.8%
Hanging	24	20	12	8	20	6	8	10	5	14	64.3%
Suicidal Subject	774	721	712	697	815	878	969	926	1063	1129	5.8%
Overdose	358	386	408	420	400	439	440	372	346	382	9.4%
Welfare Check	4312	4456	4416	4095	3816	4209	4781	4788	4923	5181	5.0%
Total:	5726	5719	5719	5352	5178	5651	6372	6231	6501	6837	4.9%

Mental Health Related Reports:

	2005	2006	2007	2008	2009	2010	2011	2012	2013	2014	2013-2014 % Change
Mental Hold Reports	467	375	418	419	437	430	435	432	446	427	-4.4%
Suicide	7	9	7	8	5	4	12	13	13	18	27.8%
Missing Person	151	103	124	100	92	75	88	81	69	79	12.7%