



PARKS AND RECREATION

FALL 2023

# Activity Guide



**REGISTER  
FOR CLASSES  
STARTING AT  
7AM ON:**

**AUGUST 14**  
RESIDENTS

**AUGUST 16**  
NON-RESIDENTS

**SCHOLARSHIPS AVAILABLE: [CITYOFBOISE.ORG/SCHOLARSHIPS](https://cityofboise.org/scholarships)**



FOLLOW US:



# Activity Guide

FALL 2023

## PARKS AND RECREATION COMMISSIONERS

**President**  
Liz Urban

**Vice President**  
Shari Baber

### Commissioners

Preston Carter, Angela Johnson, Linda Mazzu,  
Scott Raeber, Erik Stidham, Brian Walker

## PARKS AND RECREATION DEPARTMENT

**Director**  
Doug Holloway

**Superintendents**  
Sara Arkle, Parks

Karen Bledsoe, Administration  
Roseanne Brown, Recreation  
Lisa Duplessie, Open Space  
Gene Peacock, Zoo Boise

Bonnie Shelton, Communications & Marketing

## CITY OF BOISE ELECTED OFFICIALS

**Mayor**  
Lauren McLean

**City Council**  
Jimmy Hallyburton, Council President  
Patrick Bageant, Council President Pro Tem  
Latoria Haney Keith  
Colin Nash  
Luci Willits



**PARKS AND  
RECREATION**



**PLEASE RECYCLE THIS GUIDE**

## OUR MISSION STATEMENT

Parks and Recreation Department's mission is to enhance Boise's quality of life by working in partnership with the community to foster and support citizen well being and healthy community environments.

## ACTIVITY GUIDE

The Activity Guide is published three times a year in December (Winter/Spring), in April (Summer) and in August (Fall) by Parks and Recreation Department, 1104 Royal Blvd., Boise, Idaho 83706, 208-608-7600, [cityofboise.org/parks](http://cityofboise.org/parks). Contents ©2023 Parks and Recreation Department, all rights reserved. Printed in Boise, Idaho.

## FEES, CHARGES & CLASS TIME DISCLAIMER

Fees set in this activity guide are subject to approval by the Boise City Council. Fees are subject to change at any time by resolution of the council without additional notice except as required by Idaho Code. Prices include sales tax when applicable. In the event of an error, omission or misprint in this guide, please refer to the fees and charges that were approved by the Boise City Council. Class times are subject to change. Boise Parks and Recreation Department reserves the right to cancel activities due to lack of registration.

## REFUND & CANCELLATION POLICY

Please see page 67 for the Refund and Cancellation Policy.

## LEGALESE

In accordance with Federal civil rights law and U.S. Department of Agriculture (USDA) civil rights regulations and policies, the USDA, its agencies, offices and employees, and institutions participating in or administering USDA programs are prohibited from discriminating based on race, color, national origin, sex, disability, age, or reprisal or retaliation for prior civil rights activity in any program or activity conducted or funded by USDA. Persons with disabilities who require alternative means of communication for program information (e.g. Braille, large print, audiotape, American Sign Language, etc.), should contact the Agency (State or local) where they applied for benefits. Individuals who are deaf, hard of hearing or have speech disabilities may contact USDA through the Federal Relay Service at 800-877-8339. Additionally, program information may be made available in languages other than English. To file a program complaint of discrimination, complete the USDA Program Discrimination Complaint Form, (AD-3027) found online at: [ascr.usda.gov/complaint\\_filing\\_cust.html](http://ascr.usda.gov/complaint_filing_cust.html) and at any USDA office, or write a letter addressed to USDA and provide in the letter all of the information requested in the form. To request a copy of the complaint form, call 866-632-9992. Submit your completed form or letter to USDA by: (1) mail: U.S. Department of Agriculture Office of the Assistant Secretary for Civil Rights, 1400 Independence Avenue, SW Washington, D.C. 20250-9410; (2) fax: 202-690-7442; or (3) email: [program.intake@usda.gov](mailto:program.intake@usda.gov). This institution is an equal opportunity provider.

# Contents

## INFORMATION

- City Staff and Elected Officials . . . . . 2
- Facilities Rentals . . . . . 62
- Locations . . . . . 64
- Park Reservations . . . . . 66
- Registration Information and Form . . . . . 67

## PRESCHOOL [ WALKING-AGE 5 ]

- Art – Adult/Child . . . . . 4
- Camps . . . . . 5
- Environmental Education . . . . . 5
- Golf . . . . . 6
- Homeschool Adventures . . . . . 6
- Ice Hockey . . . . . 8
- Ice Skating . . . . . 8
- Performing Arts/Dance . . . . . 10
- Tennis . . . . . 10
- Zoo Boise Preschool Classes . . . . . 11

## YOUTH [ AGES 6-12 ]

- After-School Programs . . . . . 12
- Art . . . . . 12
- Camps . . . . . 13
- Cooking . . . . . 14
- Environmental Education . . . . . 14

- Golf . . . . . 15
- Homeschool Adventures . . . . . 16
- Ice Hockey . . . . . 18
- Ice Skating . . . . . 18
- Performing Arts . . . . . 20
- School Break Programs . . . . . 21
- Sports/Fitness . . . . . 22
- Zoo Boise . . . . . 22

## TEENS [ AGES 13-17 ]

- After-School Programs . . . . . 24
- Art . . . . . 25
- Camps . . . . . 25
- Cooking . . . . . 26
- Environmental Education . . . . . 26
- Homeschool Adventures . . . . . 28
- School Break Programs . . . . . 28
- Performing Arts . . . . . 29
- Sports/Fitness . . . . . 29

## ADULTS [ 18 & OVER ]

- Art . . . . . 30
- Cooking . . . . . 32
- Environmental Education . . . . . 33
- Golf . . . . . 34
- Performing Arts . . . . . 35

- Social Partner Dancing . . . . . 36
- Sports/Fitness . . . . . 37
- Zoo Boise . . . . . 44

## OLDER ADULTS [ AGES 62+ ]


- Lifetime and Leisure . . . . . 46
- Dick Eardley Senior Center . . . . . 50

## ADAPTIVE RECREATION [ ALL AGES ]

- Adaptive Recreation Information . . . . . 54
- Classes & Clubs . . . . . 55
- One-Day Activities . . . . . 56
- Adventure Seeker Program/  
Wheelchair Sports . . . . . 59

## VOLUNTEER [ ALL AGES ]

- Volunteer . . . . . 60



**REGISTER FOR CLASSES  
STARTING AT 7AM:  
[cityofboise.org/parks](http://cityofboise.org/parks)**

**AUGUST 14** (Residents)  
**AUGUST 16** (Non-residents)

*“Offering affordable, quality programming is at the heart of what we do here at Boise Parks and Recreation. We’re also committed to increasing recreation opportunities for kids and adults of all abilities — and that means making important improvements to our playgrounds, trails and other facilities with all users in mind. Thank you for your support as we create a city for everyone!”*

*–Doug Holloway, Director*







## PRESCHOOL (WALKING-AGE 5)

### ART – ADULT/CHILD

All materials are provided. Fees include both adult/guardian and child.

#### ART START

**AGES 2.5-5 + ADULT** Preschoolers will be introduced to all kinds of fun art projects using a variety of materials such as clay, paint, textiles, pastels and more.

#### ART DO-IT-TOGETHER

**AGES 5-7 + ADULT** Come have artistic fun with your child! Create one-of-a-kind clay sculptures, make a colorful batik project, draw with pastels and paint with watercolors.

#### CLAY CLASS FOR CREATIVE KIDS

**AGES 2.5-5 + ADULT** Have fun making plates, figures, vases and wall hangings. Students will decorate and glaze their one-of-a-kind clay creations.

#### HOLIDAY CRAFTS

**AGES 2.5-5 + ADULT** Use a variety of materials to create extra-special holiday crafts that your family will cherish for years to come.

#### STORIES THAT COME ALIVE

**AGES 2.5-5 + ADULT** Bring your child to the Art Center for fun activities that include art projects centered around special stories for children.



Holiday Crafts

AGE	CLASS	DAY	TIME	DATE	LOCATION	INSTRUCTOR	FEE RES/NR	ACTIVITY#
2.5-5 + Adult	ART START	Tu	10-10:45AM	Sept 26-Oct 31	Fort Boise CC	Karen Hedger	\$56/\$86.25	102701-01
		Th	9-9:45AM	Sept 28-Nov 2				102701-02
2.5-5 + Adult	CLAY CLASS FOR CREATIVE KIDS	Tu	9-9:45AM	Sept 26-Oct 31	Fort Boise CC	Karen Hedger	\$56/\$86.25	102713-01
2.5-5 + Adult	HOLIDAY CRAFTS	Tu	9-9:45AM	Nov 21-Dec 5	Fort Boise CC	Karen Hedger	\$28.50/\$43.63	102703-01
			10-10:45AM					102703-02
			11-11:45AM					102703-03
2.5-5 + Adult	STORIES THAT COME ALIVE	Th	10-10:45AM	Sept 28-Nov 2	Fort Boise CC	Karen Hedger	\$56/\$86.25	102705-01
5-7 + Adult	ART DO-IT-TOGETHER	W	4:15-5:15PM	Sept 27-Nov 1	Fort Boise CC	Karen Hedger	\$74.33/\$114.66	102704-01


# CAMPS

## GEARLINGS MOUNTAIN BIKE CAMP – Beginner

**AGES 4-5** Learn about bike basics, brakes, gears, how to communicate and explore the feel of riding on dirt trails. We will learn how to maneuver up and down hills using assistants with a TowWhee if needed. Participants must be able to ride a bike, no Strider style bikes allowed without pedals.

## PRESCHOOL OPEN GYM (DROP-IN PLAY)

**AGES 5 & UNDER + ADULT** Preschoolers will love playing with balls, gym scooters and age-appropriate gym equipment in the Fort Boise Community Center gym.



**REGISTER FOR CLASSES STARTING AT 7AM:**  
[cityofboise.org/parks](http://cityofboise.org/parks)

**AUGUST 14** (Residents)  
**AUGUST 16** (Non-residents)

AGE	CLASS	DAY	TIME	DATE	LOCATION	FEE RES/NR	ACTIVITY#
4-5	GEARLINGS MOUNTAIN BIKE CAMP – Beginner	Tu-Th	5-7PM	Aug 29-31	Fort Boise CC	\$38.50/\$59.14	120704-01
5 & Under + Adult	PRESCHOOL OPEN GYM	Tu, Th	9-11AM	Oct 3-April 30*	Fort Boise CC	\$1 per Child	N/A

\*No preschool open gym: Nov 20-24 & Dec 25-Jan 6

# ENVIRONMENTAL EDUCATION

## BOISE OUTDOOR PRESCHOOL – FLC & BUGS

**AGES 3.5-5** Immerse your child in the outdoors (FLC) or garden (BUGS) environment. Preschoolers will explore the surrounding ecosystem, learn through a STEM-based curriculum and develop cognitive, motor, and emotional skills. We spend most of our class time outside, but have access to an indoor facility if needed. Program runs August 28, 2023-May 17, 2024. Registering for Outdoor Preschool will reserve your spot and commit your child to the program for the full school year. You will be billed monthly. Children must be bathroom independent and out of diapers. An email will be sent to parents with more information before the start date.

## EXPLORE NATURE – Adult/Child

**AGES 3-6 + ADULT** Join your child for an exploration in nature! We will go on a short hike and participate in a craft, game or other activity at our outdoor facility. Children should dress for

the weather and be accompanied by an adult. Fee includes child and adult.

## GROW TOGETHER GARDENING – Adult/Child

**AGES 2-4 + ADULT** Spend a morning in our garden exploring the natural world with your little ones. Instructors will facilitate activities and garden tasks that will have you and your child working and learning together. Cost includes adult and child.

## LITTLE GARDENERS PRESCHOOL DROP-OFF

**AGES 3.5-5** These 3-hour drop-off sessions focus on seasonal gardening and encourage exploration, creativity and healthy eating. Hands-on outdoor activities include garden activities, science experiments, story time, craft projects, bug catching and more.

## STORY TRAIL ADVENTURE – Adult/Child

**AGES 3-6 + ADULT** We invite you and your preschooler to join us to walk our ¼ mile trail and read a story together. Afterwards each child can get creative with our story-related craft. Children should dress for the weather and be accompanied by an adult.



Story Trail Adventure

AGE	CLASS	DAY	TIME	DATE	LOCATION	FEE	ACTIVITY#
2-4 + Adult	GROW TOGETHER GARDENING – Adult/Child	Sa	10-11:30AM	Sept 16	BUGS	\$7.25	124003-01
				Oct 14			124003-02
3.5-5	BOISE OUTDOOR PRESCHOOL – FLC	Tu-Th	9AM-12PM	Aug 29-Sept 21	Foothills LC	\$259	425060-01
			1-4PM				425060-02
		M-F	9AM-12PM	Aug 28-Sept 22*	\$431	425060-03	
3.5-5	BOISE OUTDOOR PRESCHOOL – BUGS	Tu-Th	9AM-12PM	Aug 29-Sept 21	BUGS	\$259	424013-01
3.5-5	LITTLE GARDENERS PRESCHOOL DROP-OFF	F	9AM-12PM	Sept 1-22	BUGS	\$87	124001-01
				Sept 29-Oct 20			124001-02
3-6 + Adult	EXPLORE NATURE – Adult/Child	Sa	10-11:30AM	Sept 23	Foothills LC	\$7.25	125965-01
				Oct 28			125965-02
3-6 + Adult	STORY TRAIL ADVENTURE – Adult/Child	F	12:30-2PM	Sept 8	Foothills LC	\$7.25	125010-01
				Oct 13			125010-02

\*No class Sept 4

# GOLF



Golf Lessons

## GOLF LESSONS

**AGES 4-6** Classes will cover full-swing, stance, grip, short game, chipping and putting. All classes are open to any skill level from beginner to advanced. Clubs will be provided for the students during class time.

AGE	CLASS	DAY	TIME	DATE	LOCATION	FEE	ACTIVITY#
4-6	GOLF LESSONS – Quail Hollow	Tu-Th	9:30-10:30AM	Sept 12-14	Quail Hollow	\$69	170001-01
				Sept 19-21			170001-02
				Oct 10-12			170001-03
4-6	GOLF LESSONS – Warm Springs	Tu-Th	9:30-10:30AM	Sept 12-14	Warm Springs	\$69	180001-01
				Sept 19-21			180001-02
				Oct 10-12			180001-03

# HOMESCHOOL ADVENTURES



Homeschool Zoo

## HOMESCHOOL ZOO

**AGES 5-6** The Homeschool Zoo program series provides a unique learning experience for students schooled at home. The course consists of classroom discussion, laboratory activities, animal encounters and specialized zoo tours. Classes will align with Idaho State Science Standards and focus on topics and principles based on grade level. Themes will emphasize looking at animal groups and taxonomy, adaptations, habitats and ecology. Each individual household must register their child for the class. Kids only! Please bring a small snack for a 15-minute break during class.

## WATERSHED HOMESCHOOL DAYS

**6+ & ADULT** Calling all homeschools! The WaterShed offers FREE programs catered to children. The event will take place outdoors at the Boise River, unless inclement weather. Pre-register thru the Eventbrite link found on our event calendar at [boisewatershed.org](http://boisewatershed.org).

AGE	CLASS	DAY	TIME	DATE	LOCATION	FEE RES/NR	ACTIVITY#
5-6	HOMESCHOOL ZOO – Biotic/Abiotic Factors	Tu	9-11AM	Sept 26	Zoo Boise	\$14*	130550-01
5-6	HOMESCHOOL ZOO – Animal Necessities	W	9-11AM	Oct 4	Zoo Boise	\$14*	130550-02
5-6	HOMESCHOOL ZOO – Enviro Problem Solvers	W	9-11AM	Nov 1	Zoo Boise	\$14*	130550-03
6+ & Adult	BOISE WATERSHED HOMESCHOOL DAY – Boise River Water Testing	Tu	1-3PM	Sept 12	Boise WaterShed	FREE	N/A





Experience the unique spaces that inspired American artist, James Castle, with a variety of in-person and online opportunities exploring Castle's unique creative spaces, contemporary and historical exhibitions, along with talks and tours.

More at [jamescastlehouse.org](http://jamescastlehouse.org)



# BOISE outdoor PRESCHOOL

## OUTDOOR PRESCHOOL TOURS



Looking for a fun outdoor experience for your 3½ - 5 year old? Come tour the **Foothills Learning Center (FLC)** and **Boise Urban Garden School (BUGS)** to learn about our preschool programs.



### SET UP A TOUR

FOOTHILLS | [FLC-Parks@cityofboise.org](mailto:FLC-Parks@cityofboise.org) | 208-608-7810  
BUGS | [BUGS@cityofboise.org](mailto:BUGS@cityofboise.org) | 208-972-8630



# IN THE KNOW

CITY of BOISE

NEWS  
EVENTS  
MEETINGS  
+ MORE



### SIGN UP TODAY

Our weekly email features news, information about services, upcoming events, important meetings and ways you can get involved in making Boise a city for everyone.

[cityofboise.org/in-the-know](http://cityofboise.org/in-the-know)



## BACK TO SCHOOL *with the Library!*

Programs like School Age Fun, Read to a Therapy Dog, and Family Storytime

Homework help resources with worksheets, videos, and educational games

Books for school and for fun!

[BoisePublicLibrary.org](http://BoisePublicLibrary.org)

Library!

## ICE HOCKEY/ ICE SKATING

### PROGRAMS

#### Hockey Learn to Play

An annual membership from USA HOCKEY is required for all participants. Go to [USAHockey.com](http://USAHockey.com) to purchase your annual USA HOCKEY Membership before enrolling.

Idaho IceWorld will provide hockey rental equipment for a one-time equipment rental fee of \$35. This rental fee will be charged per child, one time for the duration of their participation in the Hockey Learn to Play program. This fee will be assessed at the time the equipment is picked up or assigned. Helmet and stick must be provided by skater.

The focus and goal of the Hockey Learn to Play curriculum is to teach beginner hockey players the fundamentals of skating. It is important for these developing players to become comfortable on the ice, learn the basic hockey stance, stride, knee bend, use of edges and how to hold a stick before moving into a 6U or 8U full hockey curriculum. Players need to be able to participate in class independently from adult. Scholarships are available.



### PROGRAM

#### Learn to Skate

Recognized by Learn to Skate USA® as a top program in the country, Idaho IceWorld's Learn to Skate program provides a fun and structured way for skaters to be physically active and improve their skills under the professional eyes of certified instructors. We have group classes for all levels and ages. Check out the curriculum for each level at [LearnToSkateUSA.com](http://LearnToSkateUSA.com). All students of Idaho IceWorld's Learn to Skate program must have a current Learn to Skate USA® membership. Annual memberships are valid July 1-June 30. With your annual fee of \$17 you will:

- Be a member of the best skating program endorsed by U.S. Figure Skating, USA Hockey, and US Speedskating.
- Gain great information to make sure your first glides on ice are successful ones.
- Receive a Welcome Packet in the mail, which includes a subscription to Learn To Skate USA® The Magazine valued at \$3 (allow 2-4 weeks for delivery).
- Receive secondary sport accident insurance.
- Participate in lessons, performances, competitions, and all activities associated with Learn to Skate USA®.

**Ice skates will be provided for all enrolled participants of the Learn to Skate program for use during class time.**

Go to [learntoskateusa.com](http://learntoskateusa.com) to purchase before registering for class.

### ICE HOCKEY

#### HOCKEY LEARN TO PLAY 1 (H1)

**AGES 4-7** Players will learn how to sit on ice and stand up, proper stance, march forward, forward two-foot glide, dip, squat, scooter pushes, T-push, forward swizzles, snowplow stop and backwards skating. Full equipment required. Helmet must be provided by skater. No sticks allowed.

#### HOCKEY LEARN TO PLAY 2 (H2) Prerequisite: Hockey Learn to Play 1 (H1)

**AGES 4-7** Players will learn backward stance, skating forward using full strides, forward one-foot glides, backward hustle, backward swizzles, glide turns and moving snowplow stops. Full equipment required. Helmet and stick must be provided by skater.

#### HOCKEY LEARN TO PLAY 3 (H3) Prerequisite: Hockey Learn to Play 2 (H2)

**AGES 4-7** Players will learn one-foot snowplow stop, introduce hips with ¼ turn twist to hockey stop, full strides using 45-degree V-Push, shuffle stride, backwards hustle, backward C-Cuts, power pushes, backward outside edge glide, forward C-Cuts, C-push glide, forward outside & inside edges, gliding 2 foot turn, and lateral crossover march. Classes will be structured following USA Hockey American Development Model (ADM) Program. Full equipment required. Helmet and stick must be provided by skater.

#### HOCKEY LEARN TO PLAY (H4) Prerequisite: Hockey Learn to Play 3 (H3)

**AGES 4-7** Class includes on-ice coaching instruction and scrimmages. Full hockey equipment is required. Helmet and stick must be provided by skater.

### ICE SKATING

#### SPUDS AND TATER TOTS (Parent Participation Required)

**AGES 2-3 + ADULT** On ice adult participation is REQUIRED! Designed for children ages 2-3 and their accompanying adult. Basic skating skills will be taught to the children while allowing adults to offer support and security. Both adults and children are required to wear ice skates and have Learn to Skate USA memberships.



# ICE HOCKEY/ ICE SKATING CON'T

## SNOWPLOW SAM 1 (Beginners)

**AGES 4-6** Young skaters will learn how to sit and stand up with their skates both on and off the ice. They will master marching in place, marching forward, going from marching to a two-foot glide and dipping in place. Once all skills are mastered, skaters advance to Snowplow Sam 2 and receive a Certificate of Achievement and a Snowplow Sam 1 badge.

## SNOWPLOW SAM 2 (Prerequisite Snowplow Sam 1)

**AGES 4-6** Young skaters will learn how to march followed by a long glide, dip while moving, do backward walking and wiggles, forward swizzles, beginning snowplow stop motion and the two-foot hop in place. Once all skills are mastered, skaters advance to Snowplow Sam 3 and receive a Certificate of Achievement and a Snowplow Sam 2 badge.

## SNOWPLOW SAM 3 (Prerequisite Snowplow Sam 2)

**AGES 4-6** Young skaters will learn how to skate forward, do a forward one-foot glide, forward swizzles, backward swizzles, backward two-foot glide, moving forward snowplow stop and curves. Once all skills are mastered, skaters advance to Snowplow Sam 4 or Basic 2 (based on age and ability) and receive a Certificate of Achievement and a Snowplow Sam 3 badge.

## SNOWPLOW SAM 4 (Prerequisite Snowplow Sam 3)


**AGES 4-6** Young skaters will learn how to skate forward, advanced one-foot glide, backward swizzles, rocking horse, two-foot turns from forward to backward and two-foot hop. Once all skills are mastered, skaters advance to Basic 2 or 3 (based on instructor recommendation) and receive a Certificate of Achievement and a Snowplow Sam 4 badge.

## JINGLE BLADES ICE SHOW CAST – Snowplow Sam & Basic

**AGES 4+** Find more information on page 18.



**SCHOLARSHIPS AVAILABLE:**  
[cityofboise.org/scholarships](http://cityofboise.org/scholarships)



**REGISTER FOR CLASSES STARTING AT 7AM:**  
[cityofboise.org/parks](http://cityofboise.org/parks)  
**AUGUST 14 (Residents)**  
**AUGUST 16 (Non-residents)**

AGE	CLASS	DAY	TIME	DATE	LOCATION	FEE	ACTIVITY#
<b>ICE HOCKEY</b>							
4-7	HOCKEY LEARN TO PLAY 1 (H1)	Tu	5:30-6PM	Sept 12-Oct 24	Idaho IceWorld	\$120/7 classes	160000-01
				Nov 7-Dec 19*		\$103/6 classes	160000-03
4-7	HOCKEY LEARN TO PLAY 2 (H2) Prerequisite: Hockey Learn to Play 1 (H1)	Tu	5:30-6PM	Sept 12-Oct 24	Idaho IceWorld	\$120/7 classes	160001-01
				Nov 7-Dec 19*		\$103/6 classes	160001-03
4-7	HOCKEY LEARN TO PLAY 3 (H3) Prerequisite: Hockey Learn to Play 2 (H2)	Tu	6:15-7:15PM	Sept 12-Oct 24	Idaho IceWorld	\$197/7 classes	160002-01
				Nov 7-Dec 19*		\$169/6 classes	160002-03
4-7	HOCKEY LEARN TO PLAY (H4) Prerequisite: Hockey Learn to Play 3 (H3)	Tu	6:15-7:15PM	Sept 12-Oct 24	Idaho IceWorld	\$197/7 classes	160003-01
				Nov 7-Dec 19*		\$169/6 classes	160003-03
<b>ICE SKATING</b>							
2-3 + Adult	SPUDS AND TATER TOTS (Parent Participation Required)	M	5:45-6:15PM	Sept 11-Oct 23	Idaho IceWorld	\$120/7 classes	161000-01
		W		Sept 6-Oct 25		\$137/8 classes	161000-02
		M		Oct 30-Dec 11*		\$103/6 classes	161000-03
		W		Nov 1-Dec 13*		\$103/6 classes	161000-04
4-6	SNOWPLOW SAM 1 (Beginners)	M	5:45-6:15PM	Sept 11-Oct 23	Idaho IceWorld	\$120/7 classes	161001-01
		W		Sept 6-Oct 25		\$137/8 classes	161001-02
		M		Oct 30-Dec 11*		\$103/6 classes	161001-03
		W		Nov 1-Dec 13*		\$103/6 classes	161001-04
4-6	SNOWPLOW SAM 2 (Prerequisite Snowplow Sam 1)	M	5:45-6:15PM	Sept 11-Oct 23	Idaho IceWorld	\$120/7 classes	161002-01
		W		Sept 6-Oct 25		\$137/8 classes	161002-02
		M		Oct 30-Dec 11*		\$103/6 classes	161002-03
		W		Nov 1-Dec 13*		\$103/6 classes	161002-04
4-6	SNOWPLOW SAM 3 (Prerequisite Snowplow Sam 2)	M	5:45-6:15PM	Sept 11-Oct 23	Idaho IceWorld	\$120/7 classes	161003-01
		W		Sept 6-Oct 25		\$137/8 classes	161003-02
		M		Oct 30-Dec 11*		\$103/6 classes	161003-03
		W		Nov 1-Dec 13*		\$103/6 classes	161003-04
4-6	SNOWPLOW SAM 4 (Prerequisite Snowplow Sam 3)	W	5:45-6:15PM	Sept 6-Oct 25	Idaho IceWorld	\$137/8 classes	161013-01
		W		Nov 1-Dec 13*		\$103/6 classes	161013-02
4+	JINGLE BLADES ICE SHOW CAST – Snowplow Sam & Basic	W	6:45-7:30PM	Sept 13-Dec 6	Idaho IceWorld	\$116	161110**

\*No class Nov 20-24 \*\*Registration deadline is Sept 12

# PERFORMING ARTS/DANCE

## BALLET – Musical

**AGES 3.5-5** This fun introduction to dance and ballet is great for boys and girls alike! Through basic steps, terminology, creative movement, storytelling dances and ballet, we will encourage creativity, coordination and self-esteem.

## MOVE IT!

**AGES 3.5-5** Come learn basic dance steps, terminology and explore creative movement

styles through imaginative music and games in a fun positive environment. Class time will be spent helping young dancers enhance physical development, interaction with others, following directions and self-esteem.

## TAP – Beginner/Intermediate

**AGES 3.5-5** What could be better than having fun while making music with your feet? Tap helps develop strong legs, balance and quick feet. Students will have a tremendous amount

of fun learning the basics in a fun, positive environment. Tap shoes are required. For information on where to purchase, please contact Clay Lee, 208-608-7684.



**SCHOLARSHIPS AVAILABLE:**  
[cityofboise.org/scholarships](http://cityofboise.org/scholarships)

AGE	CLASS	DAY	TIME	DATE	LOCATION	INSTRUCTOR	FEE RES/NR	ACTIVITY#
3.5-5	BALLET – Musical	M	2-2:45PM	Sept 11-Oct 23	Fort Boise CC	Meridian Lin Negilski	\$33.83/\$51.89	112717-01
				Oct 30-Dec 18*				112717-02
		W	10-10:45AM	Sept 6-Oct 25		Shannon Peterson	\$38.52/\$59.16	112717-03
				Nov 1-Dec 20*			\$33.83/\$51.89	112717-04
		Th	11-11:45AM	Sept 7-Oct 26		Shannon Peterson	\$38.52/\$59.16	112717-05
				Nov 2-Dec 21*			\$33.83/\$51.89	112717-06
3.5-5	MOVE IT!	Tu	10-10:45AM	Sept 5-Oct 24	Fort Boise CC	Meridian Lin Negilski	\$38.52/\$59.16	112701-01
				Oct 31-Dec 19*				\$33.83/\$51.89
3.5-5	TAP – Beginner/Intermediate	Tu	11-11:45AM	Sept 5-Oct 24	Fort Boise CC	Meridian Lin Negilski	\$38.52/\$59.16	112004-05
				Oct 31-Dec 19*				\$33.83/\$51.89
		Th	10-10:45AM	Sept 7-Oct 26		Shannon Peterson	\$38.52/\$59.16	112004-07
				Nov 2-Dec 21*			\$33.83/\$51.89	112004-08
5-7	TAP – Beginner/Intermediate	W	5:30-6:15PM	Sept 6-Oct 25	Fort Boise CC	Shannon Peterson	\$38.52/\$59.16	112004-01
				Nov 1-Dec 20*				\$33.83/\$51.89

\*No class Nov 20-25

# TENNIS



Tennis

## TENNIS – Adult/Child

**AGES 5-12 + ADULT** Adults will learn beginner skills while children are taught separately. Proper technique is emphasized along with racquet control, cooperation and movement. Lessons are incorporated into fun games to help children stay focused and interested while learning to play. Only register child, please provide adult's name at time of registration.



**REGISTER FOR CLASSES STARTING AT 7AM:**  
[cityofboise.org/parks](http://cityofboise.org/parks)

**AUGUST 14** (Residents)  
**AUGUST 16** (Non-residents)

AGE	CLASS	DAY	TIME	DATE	LOCATION	INSTRUCTOR	FEE RES/NR	ACTIVITY#
5-12 + Adult	TENNIS – Adult/Child	Tu	6-7:30PM	Sept 5-26	Ann Morrison Park	Duane Stotland	\$44/\$67.65	150015-01
				Oct 3-24	Fort Boise Park			150015-02

# ZOO BOISE PRESCHOOL CLASSES

## PRESCHOOL ZOO

**AGES 3-5 + ADULT** Join us for an informal introduction to the wonderful world of animals! Each week features a different animal. Activities are multi-sensory and may include mini zoo tours, movement activities, listening to stories, crafts, touching artifacts and meeting live animals. The program is designed for adults and preschoolers and all children must

be accompanied by an enrolled, paying adult. Maximum of 2 children per enrolled adult. For everyone's safety and enjoyment, unregistered children (including siblings) may not attend. All children must be at least 3 years old. Both must register individually.



Preschool Zoo

## Friends of Zoo Boise

### ZOO PROGRAM REGISTRATION

To register for Zoo Boise programs, see Register for Classes at [parks.cityofboise.org](http://parks.cityofboise.org), stop by Fort Boise Community Center (700 Robbins Road), or call 208-608-7680. Registration is not available at Zoo Boise.

Friends of Zoo Boise Annual Pass Holders receive discounts on some classes. If you are a Friends of Zoo Boise (FoZB) pass holder, please enter your discount coupon code to receive your FoZB discount rate. A current pass is required and must be available for proof with identification at program check-in.

### DISCOUNTS

Friends of Zoo Boise Annual pass holders receive discounts on some zoo classes. If you are a Friends of Zoo Boise (FoZB) pass holder, please enroll in the class you are interested in and enter the code in the coupon area at checkout. A current pass is required to receive a coupon code for DISCOUNTED ZOO BOISE CLASSES. Need help applying your code? Call us at Fort Boise Community Center at 208-608-7680. To get your membership code or purchase a FoZB annual pass, call Kayla at 208-608-7765, email [mwilcox@cityofboise.org](mailto:mwilcox@cityofboise.org) or go online at [zooboise.org/support/annual-membership](http://zooboise.org/support/annual-membership).

All Zoo Boise classes are taught by FoZB staff.

FoZB = Friends of Zoo Boise

AGE	CLASS	DAY	TIME	DATE	LOCATION	FEE	ACTIVITY#
AGES 3-5 + ADULT	PRESCHOOL ZOO: SERIES 1 – (Warthog, Gila Monster, Parakeet)	Tu	10-11AM	Oct 3-17	Zoo Boise	\$26.50*	130201-01
		Sa	9:30-10:30AM	Oct 7-21			130201-02
			11AM-12PM				130201-03
	PRESCHOOL ZOO: SERIES 2 – (Wild Dog, Snake, Assassin Bug)	Tu	10-11AM	Oct 31-Nov 14			130202-01
		Sa	9:30-10:30AM	Nov 4-18			130202-02
			11AM-12PM				130202-03

\*This activity qualifies for the FoZB discount





**YOUTH** (AGES 6-12)

## AFTER-SCHOOL PROGRAMS

### Kid City After-School Programs

**AGES 6-12** After a \$20 registration fee, Boise Parks and Recreation’s Kid City will be providing FREE after-school programming at several elementary schools in the Boise and West Ada School Districts starting Monday, August 21. This program will run after school until 6PM during the 2023-2024 school year (closed on non-school days and holidays).

Programs are available for registered students in 1st-6th grade. Before-school care is not available currently. The Kid City program is ideal for youth who need this service at least three or more days per week. We anticipate these programs filling up fast and registration will be done on a first-come, first-serve basis.



Kid City After-School Programs

#### REGISTRATION

Limited spaces available at each site.

Registration will begin on Monday, August 14 for Boise residents and Wednesday, August 16 for non-residents.

**COST:** \$20 non-refundable registration fee but FREE this school year. Scholarships are available.



**SCHOLARSHIPS AVAILABLE:**  
[cityofboise.org/scholarships](http://cityofboise.org/scholarships)

AGE	CLASS	DAY	TIME	DATE	LOCATION	FEE RES/NR
6-12**	Grace Jordan Kid City	M-F	3:15-6PM	Aug 21-May 17*	Grace Jordan CC	113590-01
6-12**	Hillcrest Kid City	M-F	3:45-6PM	Aug 21-May 17*	Hillcrest Kid City Center	113598-01
6-12**	Jefferson Kid City	M-F	3:15-6PM	Aug 21-May 17*	Jefferson Kid City Center	113596-01
6-11**	McMillan Kid City	M-F	3:55-6PM	Aug 21-May 17*	McMillan Kid City Center	113595-01
6-12**	Morley Nelson Kid City	M-F	3:45-6PM	Aug 21-May 17*	Morley Nelson CC	113591-01
6-12**	Taft Kid City	M-F	3:15-6PM	Aug 21-May 17*	Taft Kid City Center	113592-01
6-12**	Whitney Kid City	M-F	3:15-6PM	Aug 21-May 17*	Whitney CC	113593-01
6-12**	Whittier Kid City	M-F	3:45-6PM	Aug 21-May 17*	Whittier CC	113594-01

\* Closed on No School Days & Holidays

\*\*Programs are for registered students in 1st-6th grade only

# ART

All materials are provided.

## ART SAMPLER

**AGES 6-8** Your child can create one-of-a-kind clay sculptures, make a colorful batik project, draw with pastels, paint with watercolors, and more. We will explore different art materials each week.

## CLAY

**AGES 6-8** Pinch, coil, slab and sculpt your way to fun! Students will create interesting pots, creatures and everyday objects using hand-built clay techniques and fired glazes.

## DRAWING & PAINTING

**AGES 6-12** Learn the fundamentals of drawing and painting in this beginning class. Explore drawing techniques, technical skills and color using brushes, pencils, inks, chalks, charcoal, watercolor and acrylics.

## MIXED MEDIA EXPLORATION

**AGES 10-13** This class provides opportunities for students to express themselves in a variety of ways using numerous mediums such as clay, collage, printmaking and more.

## POTTERY FOR KIDS

**AGES 9-14** Create original pots by forming clay on an electric potter's wheel. Make unique and more advanced hand-built projects. Young potters will learn how to apply colored glazes onto their completed masterpieces.

AGE	CLASS	DAY	TIME	DATE	LOCATION	INSTRUCTOR	FEE RES/NR	ACTIVITY#
6-8	ART SAMPLER	Tu	4:15-5:45PM	Sept 26-Nov 14	Fort Boise CC	Staff	\$72/\$111.05	102709-01
6-8	CLAY	M	4:15-5:45PM	Sept 25-Nov 13	Fort Boise CC	Staff	\$72/\$111.05	102708-01
6-8	DRAWING & PAINTING	Th	4:15-5:45PM	Sept 28-Nov 16	Fort Boise CC	Dot Martin	\$72/\$111.05	102720-01
9-12	DRAWING & PAINTING	M	4:15-5:45PM	Sept 25-Nov 13	Fort Boise CC	Staff	\$72/\$111.05	102721-01
9-14	POTTERY FOR KIDS	Tu	4:15-5:45PM	Sept 26-Nov 14	Fort Boise CC	Staff	\$72/\$111.05	102728-01
		Th		Sept 28-Nov 16		Braeden Pugmire		102728-02
10-13	MIXED MEDIA EXPLORATION	W	4:15-5:45PM	Sept 27-Nov 15	Fort Boise CC	Amanda Corleone	\$72/\$111.05	102722-01

# CAMPS

## GEAR GRINDERS MOUNTAIN BIKE CAMP – Beginner

**AGES 6-8** Young riders will learn to correctly use front brakes, rear brakes and appropriate use of gears.

## GEAR SMASHERS MOUNTAIN BIKE CAMP – Intermediate

**AGES 6-8** Riders will continue to build confidence in using front/rear brakes and gears while we introduce the 5-core mountain bike skills, body position, braking, climbing, descending and cornering.

## GEAR GREASERS MOUNTAIN BIKE CAMP – Beginner

**AGES 9-12** We will learn to execute the 5-core mountain bike skills, body position, braking, climbing, descending and cornering. Riders will gain confidence in braking and using gears at

the appropriate times and focusing on climbing with proper body mechanics.

## GEAR MASTERS MOUNTAIN BIKE CAMP – Intermediate

**AGES 9-12** Riders will begin to advance the 5-core mountain bike skills, body position, braking, climbing, descending and cornering. We will introduce how to handle rocks, gain speed while in control and climb/descend safely.

## LEGO® EV3 MINDSTORM BATTLE BOTS

**AGES 10-14** Come explore the fun with Legos®, sensors, motors and anything else to build and create all EV3 Mindstorm projects. This includes Boogie Bots, Robo-Bots and more! Get prepared to program your Bots on Ev3 software or the Lego master brain itself and get ready to battle till the end!

### PROGRAM

## Mountain Bike Camps

Boise Parks and Recreation is proud to partner with 'Get in Gear Mountain Bike School.' Camps emphasize learning to navigate our Ridge to Rivers trail system, proper etiquette, respect for nature and having fun! Details for what to expect each day will be emailed the week before camp. For questions on what level is appropriate for your rider, please contact Sheree Chaffin at sheree@getingear.us

Riders need to bring a maintained mountain bike/e-bike, snacks and water bottle. BMX, fixed geared, e-bike, or training/strider bikes will not work on the trails.

AGE	CLASS	DAY	TIME	DATE	LOCATION	FEE RES/NR	ACTIVITY#
6-8	GEAR GRINDERS MOUNTAIN BIKE CAMP – Beginner	Tu-Th	5-7PM	Sept 5-7	Fort Boise CC	\$38.50/\$59.14	120706-01
				Oct 10-12			120706-02
6-8	GEAR SMASHERS MOUNTAIN BIKE CAMP – Intermediate	Tu-Th	5-7PM	Sept 12-14	Fort Boise CC	\$38.50/\$59.14	120707-01
				Oct 17-19			120707-02
9-12	GEAR GREASERS MOUNTAIN BIKE CAMP – Beginner	Tu-Th	5-7PM	Sept 19-21	Fort Boise CC	\$38.50/\$59.14	120709-01
				Oct 24-26			120709-02
9-12	GEAR MASTERS MOUNTAIN BIKE CAMP – Intermediate	Tu-Th	5-7PM	Sept 26-28	Fort Boise CC	\$38.50/\$59.14	120710-01
10-14	LEGO® EV3 MINDSTORM BATTLE BOTS	F	6-7:30PM	Sept 8-Oct 27	Dick Eardley SC	\$76/\$117.28	119318-01
				Nov 3-Dec 22*		\$57.25/\$88.19	119318-02

\*No class Nov 10 & 24

# COOKING

## FAMILY NIGHT OUT SERIES

**ALL AGES + ADULT** Family time is best when you're learning and working together! Come to one of our Family Night Out cooking classes for some together time in the kitchen. Students under 16 must be accompanied by a paying adult. The cost is per person and each must register.

## KIDS' CULINARY SERIES

**AGES 9-14** Come hone your cooking skills and discover new flavors in our Kids' Culinary classes.



**REGISTER ONLINE:**  
[cityofboise.org/parks](http://cityofboise.org/parks)  
**AUGUST 14** (Residents)  
**AUGUST 16** (Non-residents)

AGE	CLASS	DAY	TIME	DATE	LOCATION	FEE	ACTIVITY#
All Ages + Adult	FAMILY NIGHT OUT SERIES – Global Cuisine: Tamales & Salsa	W	Sept 20	5-7PM	BUGS	\$21	124201-01
		Tu	Sept 26				124201-02
	FAMILY NIGHT OUT SERIES – Halloween Spooktacular Treats	W	Oct 11				124201-03
		Tu	Oct 17				124201-04
	FAMILY NIGHT OUT SERIES – Apple Pie ala Mode	W	Nov 8				124201-05
		Tu	Nov 14				124201-06
	FAMILY NIGHT OUT SERIES – Ravioli	W	Dec 6				124201-07
		Tu	Dec 12				124201-08
9-14	KIDS' CULINARY SERIES – Homemade Ramen	M	Sept 18	4-6PM	BUGS	\$21	124011-01
	KIDS' CULINARY SERIES – Focaccia Pizza		Oct 9				124011-02
	KIDS' CULINARY SERIES – Fritter Frenzy		Nov 6				124011-03
	KIDS' CULINARY SERIES – Cooking 101		Dec 4				124011-04

# ENVIRONMENTAL EDUCATION

## BUGS COMMUNITY DAYS

**ALL AGES** Join us at the BUGS barn and garden for seasonally-themed activities for all! Learn how to be involved with our garden community.

## HIKE & LEARN

**ALL AGES + ADULT** Join us for a fun family event at the Foothills Learning Center! We will host an evening family hike lead by a local naturalist or FLC staff. We will discover a new trail and explore new topics each month, depending on the season. Fee is per person attending.

## WATERSHED TOUR TUESDAYS

**ALL AGES + ADULT** Join us for a tour of the West Boise Water Renewal Facility. This 60-minute walking tour gives you a behind-the-scenes view of what happens when you flush! Learn how the City of Boise is renewing used water, recovering valuable resources and ultimately protecting the health of the Boise River. Closed-toe shoes required, ages 5 and up. Pre-registration is required through the Eventbrite link on our event calendar at [boisewatershed.org](http://boisewatershed.org).

## WATERSHED WEEKEND PROGRAMS

**ALL AGES + ADULT** Join the WaterShed staff for behind-the-scenes tours of Water Renewal Services. Bus transportation provided. Meet at Fort Boise Community Center Parking Lot. FREE admission, but registration is required through our link on the Event Calendar at [boisewatershed.org](http://boisewatershed.org).



**SCHOLARSHIPS AVAILABLE:**  
[cityofboise.org/scholarships](http://cityofboise.org/scholarships)

AGE	CLASS	DAY	TIME	DATE	LOCATION	FEE RES/NR	ACTIVITY#
All Ages	FALL FESTIVAL	Sa	10AM-2PM	Sept 30	BUGS	FREE	N/A
All Ages + Adult	HIKE & LEARN	F	5:30-6:30PM	Sept 15	Foothills LC	\$5	119965-01
				Oct 20			119965-02
				Nov 17			119965-03
All Ages + Adult	WATERSHED TOUR TUESDAYS	Tu	9-10AM	Sept 12	Boise WaterShed	FREE	N/A
				Oct 10			
				Nov 14			
				Dec 12			
All Ages + Adult	WATERSHED WEEKEND PROGRAMS – Biosolids Farm Tour	Sa	9:30AM-12PM	Sept 23	Boise WaterShed	FREE	N/A
18+	WATERSHED WEEKEND PROGRAMS – Water Recycling Pilot Tour	Sa	9:30AM-12PM	Oct 14	Fort Boise CC	FREE	N/A



# GOLF

## GOLF LESSONS

**AGES 4-15** Classes will cover full-swing, stance, grip, short game, chipping and putting. All classes are open to any skill level from beginner to advanced. Clubs will be provided for the students during class time.



**REGISTER FOR CLASSES  
STARTING AT 7AM :**  
[cityofboise.org/parks](http://cityofboise.org/parks)  
**AUGUST 14** (Residents)  
**AUGUST 16** (Non-residents)



**SCHOLARSHIPS  
AVAILABLE:**  
[cityofboise.org/  
scholarships](http://cityofboise.org/scholarships)



Golf Lessons

AGE	CLASS	DAY	TIME	DATE	LOCATION	FEE	ACTIVITY#
4-6	GOLF LESSONS – Quail Hollow	Tu-Th	9:30-10:30AM	Sept 12-14	Quail Hollow GC	\$69	170001-01
				Sept 19-21			170001-02
				Oct 10-12			170001-03
7-15	GOLF LESSONS – Quail Hollow	Tu-Th	4:15-5:15PM	Aug 22-24	Quail Hollow GC	\$69	470004-03
				Aug 29-31			470004-04
				Sept 5-7			470004-05
				Sept 12-14			170004-01
				Sept 19-21			170004-02
				Sept 26-28			170004-03
				Oct 3-5			170004-04
				Oct 10-12			170004-05
				Oct 17-19			170004-06
Oct 24-26	170004-07						
4-6	GOLF LESSONS – Warm Springs	Tu-Th	9:30-10:30AM	Sept 12-14	Warm Springs GC	\$69	180001-01
				Sept 19-21			180001-02
				Oct 10-12			180001-03
7-15	GOLF LESSONS – Warm Springs	Tu-Th	4:15-5:15PM	Aug 22-24	Warm Springs GC	\$69	480004-08
				Aug 29-31			480004-09
				Sept 5-7			480004-10
				Sept 12-14			180004-01
				Sept 19-21			180004-02
				Sept 26-28			180004-03
				Oct 3-5			180004-04
				Oct 10-12			180004-05
				Oct 17-19			180004-06
Oct 24-26	180004-07						

# HOMESCHOOL ADVENTURES



BUGS Homeschool Days

## BUGS HOMESCHOOL DAYS – Renewing the Garden

**AGES 6-12** The end of the harvest is just the beginning of preparing our garden for its long winter rest. Help us harvest the final pickings from the land and learn how to turn “waste” into important nutrients for the next growing season.

## HOMESCHOOL ZOO

**AGES 5-12** The Homeschool Zoo program series provides a unique learning experience for students schooled at home. The course consists of classroom discussion, laboratory activities, animal encounters and specialized zoo tours. Classes align with Idaho State Science Standards and focus on topics and principles based on grade level. Themes emphasize looking at animal groups and taxonomy, adaptations, habitats and ecology. Each individual household must register their child for the class. Kids only! Please bring a small snack for a 15-minute break during class.

## WATERSHED HOMESCHOOL DAYS

**6+ & ADULT** Calling all homeschools! The WaterShed offers FREE programs catered to children. The event will take place outdoors at the Boise River, unless inclement weather. Pre-register thru the Eventbrite link found on our event calendar at [boisewatershed.org](http://boisewatershed.org).

AGE	CLASS	DAY	TIME	DATE	LOCATION	FEE RES/NR	ACTIVITY#
6-12	BUGS HOMESCHOOL DAYS – Renewing the Garden	Th	12:30-2PM	Oct 12	BUGS	\$7.25	124104-01
6+ & Adult	BOISE WATERSHED HOMESCHOOL DAY – Boise River Water Testing	Tu	1-3PM	Sept 12	Boise WaterShed	FREE	N/A
<b>KINDER &amp; 1ST GRADE</b>							
5-6	HOMESCHOOL ZOO – Biotic/Abiotic Factors	Tu	9-11AM	Sept 26	Zoo Boise	\$14*	130550-01
	HOMESCHOOL ZOO – Animal Necessities	W		Oct 4			130550-02
	HOMESCHOOL ZOO – Enviro Problem Solvers			Nov 1			130550-03
<b>2ND &amp; 3RD GRADE</b>							
7-8	HOMESCHOOL ZOO – Beneficial Behaviors	W	9AM-11AM	Sept 27	Zoo Boise	\$14*	130551-01
	HOMESCHOOL ZOO – Parents to Children			Oct 11			130551-02
	HOMESCHOOL ZOO – Enviro Influences			Nov 8			130551-03
<b>4TH &amp; 5TH GRADE</b>							
9-10	HOMESCHOOL ZOO – Structures & Functions	Th	9AM-12PM	Sept 28	Zoo Boise	\$20.50*	130552-01
	HOMESCHOOL ZOO – Actions/Reactions	W		Oct 18			130552-02
	HOMESCHOOL ZOO – Super Senses			Nov 15			130552-03
<b>6TH &amp; 8TH GRADE</b>							
11-13	HOMESCHOOL ZOO – Science of Life	F	9AM-12PM	Sept 29	Zoo Boise	\$20.50*	130553-01
	HOMESCHOOL ZOO – Pass the Genes	W		Oct 25			130553-02
	HOMESCHOOL ZOO – Population Changes			Nov 29			130553-03

*\*This activity qualifies for the FoZB discount.*





# SCHOLARSHIPS AVAILABLE



Boise Parks and Recreation offers scholarships based on income. Scholarships available for youth, adults with disabilities and for individuals 62 years and older.

If you would like scholarship assistance, please apply in advance by visiting [cityofboise.org/scholarships](http://cityofboise.org/scholarships)



PARKS AND RECREATION



# BOISE DEPOT

CELEBRATE YOUR SPECIAL EVENT AT ONE OF BOISE'S MOST ICONIC LOCATIONS



## BOISE CITY AQUATIC CENTER



YOUTH SWIMMING

**WEST BOISE FAMILY YMCA**  
 5959 N. DISCOVERY PLACE | 208-377-9622  
 Please check website or call for facility information.  
*\*Not included with City of Boise Season Swim Pass.*

[YMCATVIDAHO.ORG](http://YMCATVIDAHO.ORG)

**RESERVATIONS**  
 208-608-7600 | [reserve@cityofboise.org](mailto:reserve@cityofboise.org)  
 2603 W. Eastover Terrace, Boise ID 83706  
[CITYOFBOISE.ORG/BOISEDEPOT](http://CITYOFBOISE.ORG/BOISEDEPOT)



# ICE HOCKEY/ICE SKATING

## ICE HOCKEY

### GOAL!

## Hockey Learn to Play

Find more information on page 8.

### HOCKEY LEARN TO PLAY 1-4 (H1-H4)

AGES 4-7 See page 8 for more information.

### HOCKEY LEARN TO PLAY 1 (H1)

AGES 8-17 Players will learn how to sit on ice and stand up, proper stance, march forward, forward two-foot glide, dip, squat, scooter pushes, T-push, forward swizzles, snowplow stop and backwards skating. Full equipment required. Helmet must be provided by skater. No sticks allowed.

### HOCKEY LEARN TO PLAY 2 (H2) Prerequisite: Hockey Learn to Play 1 (H1)

AGES 8-17 Players will learn backward stance, skating forward using full strides, forward one-foot glides, backward hustle, backward swizzles, glide turns, and moving snowplow stops. Full equipment required. Helmet and stick must be provided by skater.

### HOCKEY LEARN TO PLAY 3 (H3) Prerequisite: Hockey Learn to Play 2 (H2)

AGES 8-17 Players will learn one-foot snowplow stop, introduce hips with ¼ turn twist to hockey stop, full strides using 45-degree V-Push, shuffle stride, backwards hustle, backward C-Cuts, power pushes, backward outside edge glide, forward C-Cuts, C-push glide, forward outside & inside edges, gliding 2 foot turn, and lateral crossover march. Classes will be structured following USA Hockey American Development Model (ADM) Program. Full equipment required. Helmet and stick must be provided by skater.

### HOCKEY LEARN TO PLAY 4 (H4) Prerequisite: Hockey Learn to Play 3 (H3)

AGES 8-17 This is the first step to playing organized hockey. Full hockey equipment is required. Helmet and stick must be provided by skater.

## ICE SKATING

### PROGRAM

## Learn to Skate

Find more information on page 8.

### SNOWPLOW SAM 1-4

AGES 4-6 See page 8 for more information.

### BASIC 1 (Beginners)

AGES 7-12 Beginning skaters will learn the proper way to fall and get up, march, forward two-foot glide, dip, forward swizzles, backward wiggles, snowplow stop and a two-foot hop in place. Once all skills are mastered, skaters advance to Basic 2 and receive a Certificate of Achievement and a Basic 1 badge.

### BASIC 2 (Prerequisite Snowplow Sam 4 or Basic 1)

AGES 7-12 Skaters will learn scooter pushes, forward one-foot glides, backward two-foot glides, rocking horse, backward swizzles, two-foot turns from forward and backward, moving snowplow stop and curves. Once all skills are mastered, skaters advance to Basic 3 and receive a Certificate of Achievement and a Basic 2 badge.

### BASIC 3 (Prerequisite Basic 2)

AGES 7-12 Advancing skaters will learn forward stroking, half swizzle pumps on a circle, moving two-foot turn, backward one-foot glides, backward snowplow stop, forward slalom and forward pivots. Once all skills are mastered, skaters advance to Basic 4 and receive a Certificate of Achievement and a Basic 3 badge.

### BASIC 4 (Prerequisite Basic 3)

AGES 7-12 Skaters will learn forward outside and inside edges on a circle, forward crossovers, backward half swizzle pumps on a circle, backward one-foot glides, beginning two-foot spin and forward lunges. Once all skills are mastered, skaters advance to Basic 5 and receive a Certificate of Achievement and a Basic 4 badge.

### BASIC 5 (Prerequisite Basic 4)

AGES 7-12 Advancing skaters will learn backward outside and inside edges on a circle, backward crossovers, forward outside three-turn, advanced two-foot spin, hockey stop and a side toe hop. Once skills are mastered, skaters advance to Basic 6 and receive a Certificate of Achievement and a Basic 5 badge.

### BASIC 6 (Prerequisite Basic 5)

AGES 7-12 Learn forward inside three-turn, backward to forward two-foot turn on a circle, backward stroking, beginning one-foot spin, T-stops, bunny hop, forward spiral on a straight line and shoot the duck. Once all skills are mastered, skaters advance to Pre-Free Skate and receive a Certificate of Achievement and a Basic 6 badge.

### PRE-FREE SKATE (Prerequisite Basic 6 or Teen/Adult 6)

AGES 7+ Learn a forward inside open Mohawk from a standstill position, backward crossovers to a backward outside edge glide, backward outside edge to a forward outside edge transition, basic combination footwork, one-foot upright spin, Mazurka, Waltz jump and backward inside pivots. Once all skills are mastered, skaters advance to Free Skate 1 and receive a Certificate of Achievement and a Pre-Free Skate badge.

### FREE SKATE 1-6 (Prerequisite Pre-Free Skate)

AGES 7+ Designed to introduce the skater to the next level of figure skating. Class will concentrate on beginning jumps, spin techniques and Moves in the Field. Skaters must have mastered Pre-Free Skate elements. Once skills are mastered at a level, skaters advance to the next Free Skate level and receive a Certificate of Achievement and a badge. After completion of Free Skate 6, skaters generally focus on private instruction.

### JINGLE BLADES ICE SHOW CAST MEMBER

AGES 4+ The 2023 Boise Annual Ice Show is tentatively scheduled for Friday December 8th and Saturday December 9th, times TBD and will take place at Idaho IceWorld. All Learn to Skate students who register for BOTH the Sept/Oct and Nov/Dec sessions are eligible to participate in the annual Ice Show, co-produced by Idaho IceWorld and the Boise Figure Skating Club. Practices for Adult & Teen groups will be held on Mondays, Sept 11-Dec 4 from 7:15-7:45PM and for Youth groups on Wednesdays, Sept 13-Dec 6, 6:45-7:30PM. Two additional mandatory rehearsals are tentatively scheduled for Saturday, November 18 and December 2 at Idaho IceWorld, time TBD. Practice/rehearsal plan is subject to change. This professionally choreographed show is an IceWorld tradition. Students receive extra on and off ice instruction and have loads of fun! Being a cast member is a huge commitment of time and energy. Please ensure every practice and rehearsal are top priorities when scheduling your family activities. Participation fee will be \$116. Costume fees are additional and TBD. Check website IdahoIceWorld.com for updates. City of Boise Parks and Recreation Scholarships do not apply to this activity.

**REGISTRATION DEADLINE IS SEPTEMBER 12.**

# ICE HOCKEY/ICE SKATING CON'T



Learn to Skate



Hockey Learn to Play

AGE	CLASS	DAY	TIME	DATE	LOCATION	FEE	ACTIVITY#
<b>ICE HOCKEY</b>							
4-7	HOCKEY LEARN TO PLAY 1-4 (H1-H4)	<i>See page 8 for more information.</i>					
8-17	HOCKEY LEARN TO PLAY 1 (H1)	Tu	7:30-8:30PM	Sept 12-Oct 24 Nov 7-Dec 19*	Idaho IceWorld	\$197/7 classes \$169/6 classes	160004-01 160004-03
8-17	HOCKEY LEARN TO PLAY 2 (H2) Prerequisite: Hockey Learn to Play 1 (H1)	Tu	7:30-8:30PM	Sept 12-Oct 24 Nov 7-Dec 19*	Idaho IceWorld	\$197/7 classes \$169/6 classes	160005-01 160005-03
8-17	HOCKEY LEARN TO PLAY 3 (H3) Prerequisite: Hockey Learn to Play 2 (H2)	Tu	7:30-8:30PM	Sept 12-Oct 24 Nov 7-Dec 19*	Idaho IceWorld	\$197/7 classes \$169/6 classes	160006-01 160006-03
8-17	HOCKEY LEARN TO PLAY 4 (H4) Prerequisite: Hockey Learn to Play 3 (H3)	Tu	7:30-8:30PM	Sept 12-Oct 24 Nov 7-Dec 19*	Idaho IceWorld	\$197/7 classes \$169/6 classes	160007-01 160007-03
<b>ICE SKATING</b>							
4-7	SNOWPLOW SAM 1-4	<i>See page 8 for more information.</i>					
4-12	JINGLE BLADES ICE SHOW CAST – Snowplow Sam & Basic	W	6:45-7:30PM	Sept 13-Dec 6	Idaho IceWorld	\$116	161110***
5+	JINGLE BLADES ICE SHOW CAST – Adaptive	M	7:15-7:45PM	TBD – Dec 4	Idaho IceWorld	\$116	161110***
7-12	BASIC 1 (Beginners)	M	5:45-6:15PM	Sept 11-Oct 23	Idaho IceWorld	\$120/7 classes	161004-01
		W		Sept 6-Oct 25		\$137/8 classes	161004-02
		M		Oct 30-Dec 11*		\$103/6 classes	161004-03
		W		Nov 1-Dec 13*			161004-04
7-12	BASIC 2 (Prerequisite Snowplow Sam 4 or Basic 1)	M	6:15-6:45PM	Sept 11-Oct 23	Idaho IceWorld	\$120/7 classes	161005-01
		W		Sept 6-Oct 25		\$137/8 classes	161005-02
		M		Oct 30-Dec 11*		\$103/6 classes	161005-03
		W		Nov 1-Dec 13*			161005-04
7-12	BASIC 3 (Prerequisite Basic 2)	M	6:15-6:45PM	Sept 11-Oct 23	Idaho IceWorld	\$120/7 classes	161006-01
		W		Sept 6-Oct 25		\$137/8 classes	161006-02
		M		Oct 30-Dec 11*		\$103/6 classes	161006-03
		W		Nov 1-Dec 13*			161006-04
7-12	BASIC 4 (Prerequisite Basic 3)	M	6:15-6:45PM	Sept 11-Oct 23	Idaho IceWorld	\$120/7 classes	161007-01
		W		Sept 6-Oct 25		\$137/8 classes	161007-02
		M		Oct 30-Dec 11*		\$103/6 classes	161007-03
		W		Nov 1-Dec 13*			161007-04
7-12	BASIC 5 (Prerequisite Basic 4)	M	6:15-6:45PM	Sept 11-Oct 23	Idaho IceWorld	\$120/7 classes	161008-01
		W		Sept 6-Oct 25		\$137/8 classes	161008-02
		M		Oct 30-Dec 11*		\$103/6 classes	161008-03
		W		Nov 1-Dec 13*			161008-04
7-12	BASIC 6 (Prerequisite Basic 5)	W	6:15-6:45PM	Sept 6-Oct 25 Nov 1-Dec 13*	Idaho IceWorld	\$137/8 classes \$103/6 classes	161009-01 161009-02
7+	PRE-FREE SKATE (Prerequisite Basic 6 or Teen)	Th	5:45-6:15PM	Sept 7-Oct 26**	Idaho IceWorld	\$120/7 classes	161010-01
				Nov 2-Dec 14*		\$103/6 classes	161010-02
7+	FREE SKATE 1-6 (Prerequisite Pre-Free Skate)	Th	5:45-6:15PM	Sept 7-Oct 26**	Idaho IceWorld	\$120/7 classes	161100-01
				Nov 2-Dec 14*		\$103/6 classes	161100-02

\*No class Nov 20-24 \*\*No class Sept 14 \*\*\*Registration deadline is Sept 12

# PERFORMING ARTS

## BALLET – Beginner

**AGES 6-8** This class introduces new dancers to the basics and beginning techniques of traditional ballet while continuing to build on those techniques with returning students.

## HIP HOP

**AGES 8-12** Hip Hop is a fun high-energy dance style that will have everyone up and moving! The music is fun, hip and age-appropriate. Come ready to move and learn some cool new moves. Classes are great exercise and great fun.

## TAP – Beginner/Intermediate

**AGES 5-7** What could be better than having fun while making music with your feet? Tap helps develop strong legs, balance and quick feet. Students will have a tremendous amount of fun learning the basics in a fun, positive environment. Tap shoes are required. For information on where to purchase, please contact Clay Lee, 208-608-7684.



**REGISTER FOR CLASSES STARTING AT 7AM : [cityofboise.org/parks](http://cityofboise.org/parks)**

**AUGUST 14 (Residents)  
AUGUST 16 (Non-residents)**

AGE	CLASS	DAY	TIME	DATE	LOCATION	INSTRUCTOR	FEE RES/NR	ACTIVITY#	
5-7	TAP – Beginner/Intermediate	W	5:30-6:15PM	Sept 6-Oct 25	Fort Boise CC	Shannon Peterson	\$38.52/\$59.16	112004-01	
				Nov 1-Dec 20*			\$33.83/\$51.89	112004-02	
6-8	BALLET – Beginner	M	4:30-5:30PM	Sept 11-Oct 23	Fort Boise CC	Meridian Lin Negilski	\$44.75/\$68.83	112706-01	
				Oct 30-Dec 18*				112706-02	
		Tu		Sept 5-Oct 24		Shannon Peterson	\$51/\$78.52	112706-03	
				Oct 31-Dec 19*			\$44.75/\$68.83	112706-04	
8-12	HIP HOP	M	6-6:45PM	Sept 11-Oct 23	Fort Boise CC	Morgan Benton	\$33.83/\$51.89	112703-01	
				Oct 30-Dec 18*				112703-02	
		Tu		Sept 5-Oct 24				\$38.52/\$59.16	112703-03
				Oct 31-Dec 19*				\$33.83/\$51.89	112703-04

\*No class Nov 20-25

# STAY SAFE. HAVE FUN.

Visit [floattheboise.org](http://floattheboise.org) for all you need to know to have a safe and fun float.

## SIGN UP NOW GROUP GOLF LESSONS

WARM SPRINGS + QUAIL HOLLOW

Group lessons available for Junior and Adults. Beginner to experienced golfers welcome!

QuailHollowBoise.com  
208-972-8590

WarmSpringsGolfCourse.com  
208-972-8600



# SCHOOL BREAK PROGRAMS

## ART SAFARI – Grades 2-6

**AGES 7-10** Animals have always been celebrated in different forms of art. From paintings to sculpture, to dance and music, we'll explore all forms of art and make some of our own with a messy Zoo Boise twist.

## BOISE WINTER BREAK CAMPS

**AGES 6-11** Make new friends and have fun at the Boise Winter Break Camps located inside our community centers. Camps offer recreational games, crafts, hands-on science projects and more! Camp staff have previous experience working with youth and are trained in CPR/First Aid to ensure your child has a safe and positive experience. This camp is for youth in 1st- 6th grade only.

## DR. ZOOLITTLE – Grades 2-6

**AGES 7-10** Learn the language of veterinarians using imaginative play for some tasks (sorry, we won't be doing a dental cleaning on a tiger), reading x-rays, planning diets/Rx, and visiting with zoo staff to learn about the care provided for hundreds of animals.

## FOOTHILLS EXPLORERS CAMP

**AGES 6-12** Children can discover nature as we explore different themes, from animals, rocks, water, plants, and so much more. Through hands-on activities, and outdoor play, every child will experience the foothills. We will be indoors and outdoors. Sunscreen should be applied before camp. Closed toe shoes, a snack, and sealable water bottle are a must. Campers should come dressed for the weather. Each week is a different program.

## GARDEN TO TABLE – School Break Camps

**AGES 6-12** When school's out, come learn and cook with us in the BUGS garden and kitchen!



LEGO Spike

## LEGO® ANIMATION

**AGES 8-12** Come create and build your own mini movie set out of Legos and anything else to help create your own animated movie! Use technology to make that perfect Lego animated movie with complete editing capabilities, effects, music and narration all through iMovie and Stop Motion. Kids will have a video to keep and share with friends and family.

## LEGO® SPIKE

**AGES 10-14** Come check out this new and fun way to combine your love of Legos with easy coding. Spike has colorful LEGO® building elements, easy-to-use hardware and an intuitive drag-and-drop coding language based on Scratch. Spike Prime will engage kiddos through playful learning activities to think critically and solve complex problems, regardless of their learning level.

AGE	CLASS	DAY	TIME	DATE	LOCATION	FEE RES/NR	ACTIVITY#
6-11	BOISE WINTER BREAK CAMPS	Tu-F	8AM-5PM	Dec 26-29	Whitney CC	\$88.20/\$136.16	113000-01
				Jan 2-5			113000-02
				Dec 26-29	Whittier CC	\$88.20/\$136.16	113001-01
				Jan 2-5			113001-02
6-12	FOOTHILLS EXPLORERS CAMP	M-W	9AM-1PM	Nov 20-22	Foothills LC	\$55	119963-01
		W-F		Jan 3-5			119963-02
6-12	GARDEN TO TABLE – School Break Camps	M-Tu	9AM-1PM	Nov 20-21	BUGS	\$61	124012-01
		W-F		Jan 3-5			124012-02
7-10	ART SAFARI – Grades 2-6	F	9AM-4PM	Oct 20	Zoo Boise	\$55*	130804-02
7-10	DR. ZOOLITTLE – Grades 2-6	F	9AM-4PM	Oct 13	Zoo Boise	\$55*	130804-01
8-12	LEGO® ANIMATION	Tu-F	9AM-12PM	Dec 26-29	Fort Boise CC	\$76/\$117.25	119419-01
10-14	LEGO® SPIKE	Tu-F	9-11AM	Jan 2-5	Fort Boise CC	\$51/\$78.50	119319-01

\*This activity qualifies for the FoZB discount

# SPORTS/FITNESS

## MARTIAL ARTS – Karate Shotokan (Mixed Level)

**AGES 7-12** Learn traditional Shotokan Karate including dojo etiquette, warm-up, Kihon, Katas, and Kumite. Class will focus on Kihon or basic techniques (blocks, punches, kicks and stances) and Katas or prearrange forms (formal exercise) and Kumite or sparring as students' progress.

## TENNIS – Adult/Child

**AGES 5-12 + ADULT** Adults will learn beginner skills while children are taught separately. Proper technique is emphasized along with racquet control, coordination and movement. Lessons are incorporated into fun games to help children stay focused and interested while learning to play. Only register child, please provide adult's name at time of registration.

## TENNIS – Rallies

**AGES 8-11** Class is for both beginner and intermediate players who are ready to play on a slightly larger court. Classes are designed to continue building athletic skills while learning

or refining the skills necessary to serve, rally and score. Players will learn an understanding of proper technique and maintain that technique during point and match play.

## TENNIS – Hitters

**AGES 12-15** Dedicated to providing an opportunity for intermediate-level teenage players to progress their skills in a fun and

competitive environment. Players must have prior experience and aspirations of playing Jr. High and High School tennis. Stroke development, footwork, doubles and singles strategies will all be taught. Lessons at Ann Morrison Park will have match play on Thursdays, letting players develop areas of strength in their game.



Tennis

AGE	CLASS	DAY	TIME	DATE	LOCATION	INSTRUCTOR	FEE RES/NR	ACTIVITY#
5-12 + Adult	TENNIS – Adult/Child	Tu	6-7:30PM	Sept 5-26	Ann Morrison Park	Duane Stotland	\$44/\$67.65	150015-01
				Oct 3-24	Fort Boise Park			150015-02
7-12	MARTIAL ARTS – Karate Shotokan (Mixed Level)	M, W	5:30-6:30PM	Sept 6-Oct 30	Dick Eardley SC	Alvin Sablan, Jennifer Harrington	\$33/\$50.60	120333-01
				Nov 1-Dec 20*				120333-02
8-11	TENNIS – Rallies	Tu	4:30-6PM	Sept 5-26	Ann Morrison Park	Duane Stotland	\$44/\$67.65	150013-01
				Oct 3-24	Fort Boise Park			150013-02
12-15	TENNIS – Hitters	Th	4:30-6PM	Sept 7-28	Ann Morrison Park	Duane Stotland	\$44/\$67.65	150014-01
				Oct 5-26	Fort Boise Park			150014-02

\*No class Nov 20-24

# ZOO BOISE

## ADAPTIVE EVENING AT THE ZOO

**ALL AGES + ADULT** Join us for an after-hours zoo experience designed for individuals with disabilities and their families and friends! Stations are focused on varying degrees of sensory input and include self-guided animal artifact exploration, guided zoo exploration time (please note, some animals have an early bedtime), up-close animal encounters and art activities. Everyone is welcome to enroll!

## PROGRAM

### Guided Field Trips & School Outreach Fall 2023

Zoo Boise is excited to offer guided field trips in the autumn. We have a variety of programs available to meet the Idaho State Science Standards within each grade level. Additionally, we could tailor a program to help you meet other requirements or expand your content area.

**NEW in 2023!** We offer outreach at your school: educators will bring interesting BioFacts (pelts, skulls, etc.) and share how Zoo Boise contributes to conservation around the world. \*We do not bring live animals off-site. For more information, current pricing and to discuss funding for Title I schools, visit Zoo Boise's website at [zooboise.org/education-programs/schools-youth-groups](http://zooboise.org/education-programs/schools-youth-groups).

AGE	CLASS	DAY	TIME	DATE	LOCATION	INSTRUCTOR	FEE RES/NR	ACTIVITY#
All Ages + Adult	ADAPTIVE EVENING AT THE ZOO	Th	6-8PM	Oct 12	Zoo Boise	FoZB Staff	\$7*	130919-01

\*This activity qualifies for the FoZB discount.



**ERMA HAYMAN**  
River St. Neighborhood HOUSE Boise, Idaho

Learn about Boise's historic River Street Neighborhood, the most ethnically and culturally diverse area in Boise for much of the 20th century, through the story of long-time resident and community advocate, Erma Hayman, and her house. Daily guided tour at 1 p.m.

More at [ermahaymanhouse.org](http://ermahaymanhouse.org)



BOISE CITY  
DEPT OF ARTS  
& HISTORY



Proud Sponsorship with Idaho IceWorld

# Private Culinary Classes at BUGS



Boise Urban Garden School is excited to offer customized culinary and nutrition lessons for groups of up to 12 in our garden and kitchen. Schedule a class on nutrition for athletic performance for sports teams, private birthday parties with a culinary theme, and more.

Request your lesson online at the [cityofboise.org/bee](http://cityofboise.org/bee), via email at [BUGS@cityofboise.org](mailto:BUGS@cityofboise.org) or by calling 208-972-8630.



PARKS AND RECREATION





## TEENS

(AGE 13-17)

## AFTERSCHOOL PROGRAMS



Fort Friday at the T.A.C.

**NEW FORT FRIDAY AT THE T.A.C.**

**AGES 12-15** Calling 7th-9th graders! Kick off the weekend afterschool on Fridays in the Teen Activity Center and Fort Boise Community Center Gym! Food, sports, team challenges, scavenger hunts, arts/crafts and social circle activities will be offered. Plus, free time to socialize, play billiards, air hockey, or ping-pong. Transportation provided to/from select schools.\* No cost, but pre-registration for food count and transportation is required. Teens will be picked up from schools at 2:45PM and will be returned to school by 5:45PM. This is a transportation pilot program from these select schools, but all teens within this age range are welcome. Space is limited.



**REGISTER FOR CLASSES  
STARTING AT 7AM:**  
[cityofboise.org/parks](http://cityofboise.org/parks)

**AUGUST 14** (Residents)

**AUGUST 16** (Non-residents)

AGE	CLASS	DAY	TIME	DATE	MEET AT	PICK-UP LOCATION	FEE RES/NR	ACTIVITY#
12-15	FORT FRIDAY AT THE T.A.C.	F	2:45-5:45PM	Sept 29	Fort Boise CC*	Fairmont & West Jr. High	FREE	112834-01
				Oct 6		Fairmont & South Jr. High		112834-02
				Oct 13		South & West Jr. High		112834-03
				Oct 20		Fairmont & West Jr. High		112834-04
				Oct 27		Fairmont & South Jr. High		112834-05
				Nov 3		South & West Jr. High		112834-06

\*If you do not need transportation and are meeting at Fort Boise CC, the program will run from 3-5:30PM

# ART

All materials are provided.

## DRAWING & PAINTING

**AGES 13-18** This course focuses on beginning and intermediate drawing techniques for teens. Students can explore a variety of drawing and painting mediums including pen, pencil, charcoal, pastel, watercolor and acrylics.

## MIXED MEDIA EXPLORATION

**AGES 10-13** This class provides opportunities for students to express themselves in a variety of ways using numerous mediums such as clay, collage, printmaking and more.

## POTTERY FOR KIDS

**AGES 9-14** Learn to create original pots by forming clay on an electric potter's wheel. Students will also make unique and more

advanced hand-built projects. Young potters will also learn how to apply colored glazes onto their completed masterpieces.



**SCHOLARSHIPS AVAILABLE:**  
[cityofboise.org/scholarships](http://cityofboise.org/scholarships)

AGE	CLASS	DAY	TIME	DATE	LOCATION	INSTRUCTOR	FEE RES/NR	ACTIVITY#
9-14	POTTERY FOR KIDS	Tu	4:15-5:45PM	Sept 26-Nov 14	Fort Boise CC	Staff	\$72/\$111.05	102728-01
		Th		Sept 28-Nov 16		Braeden Pugmire		102728-02
10-13	MIXED MEDIA EXPLORATION	W	4:15-5:45PM	Sept 27-Nov 15	Fort Boise CC	Amanda Corleone	\$72/\$111.05	102722-01
13-18	DRAWING & PAINTING	W	4:15-5:45PM	Sept 27-Nov 15	Fort Boise CC	Dot Martin	\$72/\$111.05	102745-01

# CAMPS

## LADY GEARS MOUNTAIN BIKE CAMP – Beginner

**AGES 16+** This mountain biking class will begin with the 5-core mountain bike skills, body position, braking, climbing, descending, and cornering. Riders will work to gain confidence in braking and using gears at the appropriate times and focusing on climbing with proper body mechanics before learning how to safely descend. We will introduce how to handle rocks and gain speed while in control. Riders need to bring a maintained mountain bike. Please no e-bikes.

## LEGO® EV3 MINDSTORM BATTLE BOTS

**AGES 10-14** Come explore the fun with Legos®, sensors, motors and anything else to build and create all EV3 Mindstorm projects. This will include Boogie Bots, Robo-Bots and more. Get prepared to program your Bots on Ev3 software or the Lego master brain itself and get ready to battle till the end!



Lady Gears Mountain Bike Camp



**SCHOLARSHIPS AVAILABLE:**  
[cityofboise.org/scholarships](http://cityofboise.org/scholarships)

AGE	CLASS	DAY	TIME	DATE	LOCATION	INSTRUCTOR	FEE RES/NR	ACTIVITY#
10-14	LEGO® EV3 MINDSTORM BATTLE BOTS	F	6-7:30PM	Sept 8-Oct 27	Dick Eardley SC	Jackie Stafford	\$76/\$117.28	119318-01
				Nov 3-Dec 22*			\$57.25/\$88.19	119318-02
16+	LADY GEARS MOUNTAIN BIKE CAMP – Beginner	Tu-Th	5-7PM	Oct 3-5	Fort Boise CC	Staff	\$38.50/\$59.13	120746-01

\*No class Nov 10 & 24



## COOKING

### FAMILY NIGHT OUT SERIES

**ALL AGES + ADULT** Family time is best when you're learning and working together! Come to one of our Family Night Out cooking classes for some together time in the kitchen. Students under 16 must be accompanied by a paying adult. The cost is per person and each must register.

### KIDS' CULINARY SERIES

**AGES 9-14** There are more opportunities than ever to hone your cooking skills and discover new flavors in our Kids' Culinary classes.

### FUN & HEALTHY CULINARY SERIES- Kimchi

**AGES 14+** Delicious kimchi from garden to

table in this class that bridges growing veggies through the fermentation process.

### FUN & HEALTHY CULINARY SERIES - Sourdough

**AGES 14+** Simple, approachable recipes for novice and experienced sourdough bakers alike.

AGE	CLASS	DAY	TIME	DATE	LOCATION	INSTRUCTOR	FEE	ACTIVITY#
All Ages + Adult	FAMILY NIGHT OUT SERIES – Global Cuisine: Tamales & Salsa	W	Sept 20	5-7PM	BUGS	Staff	\$21	124201-01
		Tu	Sept 26					124201-02
	FAMILY NIGHT OUT SERIES – Halloween Spooktacular Treats	W	Oct 11					124201-03
		Tu	Oct 17					124201-04
	FAMILY NIGHT OUT SERIES – Apple Pie ala Mode	W	Nov 8					124201-05
		Tu	Nov 14					124201-06
	FAMILY NIGHT OUT SERIES – Ravioli	W	Dec 6					124201-07
		Tu	Dec 12					124201-08
9-14	KIDS' CULINARY SERIES – Homemade Ramen	M	Sept 18	4-6PM	BUGS	Staff	\$21	124011-01
			Oct 9					124011-02
	Nov 6		124011-03					
	Dec 4		124011-04					
14+	FUN & HEALTHY CULINARY SERIES – Kimchi	Th	Sept 28	5:30-7:30PM	BUGS	Pohley Richey*	\$21	124203-01
	FUN & HEALTHY CULINARY SERIES – Sourdough		Nov 9					124203-02

\*Registered Dietitian

## ENVIRONMENTAL EDUCATION

### GARDENING BASICS

**AGES 14+** Join the BUGS team to learn more about season-specific gardening topics.

### HIKE & LEARN

**ALL AGES + ADULT** Join us for a fun family event at the Foothills Learning Center! We will host an evening family hike lead by a local naturalist or FLC staff. We will discover a new trail and explore new topics each month, depending on the season. Fee is per person attending.



Hike & Learn

AGE	CLASS	DAY	TIME	DATE	LOCATION	FEE RES/NR	ACTIVITY#
14+	GARDENING BASICS – Habitat Gardens/ Weeds & Pests	Sa	9-11AM	Sept 9	BUGS	\$21	124108-01
	GARDENING BASICS – Soil Health & Irrigation			Sept 23			124108-02
	GARDENING BASICS – Season Extension & Seed Starting			Oct 7			124108-03
	GARDENING BASICS – Garden Planning			Nov 4			124108-04
All Ages + Adult	HIKE AND LEARN	F	5:30-6:30PM	Sept 15	Foothills LC	\$5	119965-01
				Oct 20			119965-02
				Nov 17			119965-03





## FORT FRIDAY AT THE TEEN ACTIVITY CENTER



### CALLING 7TH – 9TH GRADERS!

**Kick off the weekend afterschool on Fridays in the Teen Activity Center and Fort Boise Community Center Gym!**

Food, sports, team challenges, scavenger hunts, arts/crafts and social circle activities will be offered!

#### FREE FOR ALL!

Pre-registration for food count and transportation is required.

Pick up from schools at 2:45 PM and will be returned to school by 5:45 PM.

DATES	PICKUP LOCATIONS
Sept 29	West & Fairmont Junior High
Oct 6	Fairmont & South Junior High
Oct 13	South & West Junior High
Oct 20	West & Fairmont Junior High
Oct 27	Fairmont & South Junior High
Nov 3	South & West Junior High



PARKS AND RECREATION

Boise Senior Center's 42nd Annual  
**HOLIDAY BAZAAR**  
NOVEMBER 18, 10 AM – 2 PM

The Dick Eardley Senior Center will be filled with crafters, artists, food gifts, seasonal décor, and much more.

Enjoy a festive holiday atmosphere while you check off your holiday shopping list.

**STAY FOR LUNCH**  
Lunch items, popcorn and beverages will be available to purchase.

690 Robbins Road, Boise | 208-608-7580

## IDAHO TENNIS ASSOCIATION

### JUNIOR TENNIS

The Idaho Tennis Association offers free introduction to tennis classes, tournaments, Boise Junior Team Tennis and round-robin match play.

See website for information or contact Ryan Stewart, [rstewart@idtennis.com](mailto:rstewart@idtennis.com) or 208-322-5150 ex. 206.

### ADULT SOCIAL TENNIS

New to tennis or an experienced player who wants to play without the structure of USTA leagues? Social tennis is for you! An on-court instructor organizes live match play and provides tips to improve your game.

See website for information or contact Lori Griffel at [lgriffel@idtennis.com](mailto:lgriffel@idtennis.com) or call 208-322-5150 ex. 207.

[idtennis.com](http://idtennis.com)

## HOMESCHOOL ADVENTURES



Homeschool Zoo

### HOMESCHOOL ZOO

**AGES 11-13** The Homeschool Zoo program series provides a unique learning experience for students schooled at home. The course consists of classroom discussion, laboratory activities, animal encounters and specialized zoo tours. Classes align with Idaho State Science Standards and focus on topics and principles based on grade level. Themes will emphasize looking at animal groups and taxonomy, adaptations, habitats and ecology. Each individual household must register their child for the class. Kids only! Please bring a small snack for a 15-minute break during class.



**SCHOLARSHIPS  
AVAILABLE:**  
[cityofboise.org/  
scholarships](http://cityofboise.org/scholarships)

AGE	CLASS	DAY	TIME	DATE	LOCATION	FEE RES/NR	ACTIVITY#
11-13	HOMESCHOOL ZOO – Science of Life	F	9AM-12PM	Sept 29	Zoo Boise	\$20.50*	130553-01
11-13	HOMESCHOOL ZOO – Pass the Genes	W		Oct 25			130553-02
11-13	HOMESCHOOL ZOO – Population Changes			Nov 29			130553-03

*\*This activity qualifies for the FoZB discount.*

## SCHOOL BREAK PROGRAMS



LEGO Spike

### LEGO® SPIKE

**AGES 10-14** Come check out this new and fun way to combine your love of Legos with easy coding. Spike has colorful LEGO® building elements, easy to use hardware, and an intuitive drag and drop coding language based on Scratch. Spike Prime will engage kiddos through playful learning activities to think critically and solve complex problems, regardless of their learning level.



**REGISTER FOR CLASSES  
STARTING AT 7AM :**  
[cityofboise.org/parks](http://cityofboise.org/parks)

**AUGUST 14** (Residents)  
**AUGUST 16** (Non-residents)

AGE	CLASS	DAY	TIME	DATE	LOCATION	FEE RES/NR	ACTIVITY#
10-14	LEGO® SPIKE	Tu-F	9-11AM	Jan 2-5	Fort Boise CC	\$51/\$78.50	119319-01

## PERFORMING ARTS

### MUSICAL THEATER – Tap

**AGES 15-18** Tap is an energetic form of dance that focuses on rhythm and percussion. Classes will include across the floor exercises that teach dynamics, phrasing, and musicality along with choreography and improvisation. Class will help develop the elements of tap vocabulary

and individual style. The goal is to develop dancer's coordination, clarity, rhythm, timing, and phrasing in a fun challenging way.

### POI SPINNING – Beginner

**AGES 12-17** Poi spinning has been termed "yoga for the brain, a kind of 3-D, moving

puzzle for your whole body and brain." It is a fun and unique way to build coordination, upper-body strength, creative movement skills, self-confidence and a sense of humor about your own mistakes.

AGE	CLASS	DAY	TIME	DATE	LOCATION	INSTRUCTOR	FEE RES/NR	ACTIVITY#
12-17	POI SPINNING – Beginner	W	4:30-5:45PM	Sept 6-Oct 25	Dick Eardley SC	Jewels Meek	\$63.48/\$97.88	112750-01
				Nov 1-Dec 20*			\$55.67/\$85.77	112750-02
15-18	MUSICAL THEATER – Tap	W	6:15-7PM	Sept 6-Oct 25	Fort Boise CC	Shannon Peterson	\$38.52/\$59.16	112114-01
				Nov 1-Dec 20*			\$33.83/\$57.98	112114-02

\*No class Nov 20-24

## SPORTS/FITNESS

### GOLF LESSONS

**AGES 7-15** Classes will cover full-swing, stance, grip, short game, chipping and putting. All classes are open to any skill level from beginner to advanced. Clubs will be provided for the students during class time.

### HOCKEY LEARN TO PLAY 1-4 (H1-H4)

**AGES 8-17** See page 18 for more information.

### ICE SKATING – Teen & Adult 1-6

**AGES 13+** Beginners through experienced recreation skaters will receive instruction appropriate to their skill levels. Level placement will take place at the first class if skater is uncertain where they fit in. Instruction will include the skills outlined in the Adult 1-6 curriculum found at [LearntoSkateUSA.com](http://LearntoSkateUSA.com). A current Learn to Skate membership is required to register.

### ICE SKATING – Pre-Free Skate (Prerequisite Basic 6 or Teen/Adult 6)

**AGES 7+** Learn a forward inside open Mohawk from a standstill position, backward crossovers to a backward outside edge glide, backward outside edge to a forward outside edge transition, basic combination footwork, one-foot upright spin, Mazurka, Waltz jump and backward inside pivots. Once skills are mastered, skaters advance to Free Skate 1 and receive a Certificate of Achievement and a Pre-Free Skate badge.

### ICE SKATING – Free Skate 1-6 (Prerequisite Pre-Free Skate)

**AGES 7+** Designed to introduce the skater to the next level of figure skating. Class will concentrate on beginning jumps, spin techniques and Moves in the Field. Skaters must have mastered Pre-Free Skate elements. Once skills are mastered at a level, skaters advance to the next Free Skate level and receive a Certificate of Achievement and a badge. After completion of Free Skate 6, skaters generally focus on private instruction.

### JINGLE BLADES ICE SHOW CAST MEMBER

**AGES 13-17** See page 18 for more information.

### MARTIAL ARTS – Karate Shotokan – Mixed Level (13+)

**AGES 13+** Learn traditional Shotokan Karate including dojo etiquette, warm-up, Kihon, Katas and Kumite. Class will focus on Kihon or basic techniques (blocks, punches, kicks and stances) and Katas or prearrange forms (formal exercise) and Kumite or sparring as students progress.

#### PROGRAMS

### Hockey Learn to Play

Find more information on page 8.

### Learn to Skate

Find more information on page 8.

AGE	CLASS	DAY	TIME	DATE	LOCATION	INSTRUCTOR	FEE RES/NR	ACTIVITY#
7-15	GOLF LESSONS	See page 15 for more information.						
7+	PRE-FREE SKATE (Prerequisite Basic 6 or Teen/Adult 6)	Th	5:45-6:15PM	Sept 7 -Oct 26**	Idaho IceWorld	Staff	\$120/7 classes	161010-01
				Nov 2 -Dec 14*			\$103/6 classes	161010-02
7+	FREE SKATE 1-6 (Prerequisite Pre-Free Skate)	Th	5:45-6:15PM	Sept 7 -Oct 26**	Idaho IceWorld	Staff	\$120/7 classes	161100-01
				Nov 2 -Dec 14*			\$103/6 classes	161100-02
8-17	HOCKEY LEARN TO PLAY 1-4 (H1-H4)	See page 19 for more information.						
13+	ICE SKATING – Teen & Adult 1-6	M	6:45-7:15PM	Sept 11- Oct 23	Idaho IceWorld	Staff	\$120/7 classes	161101-01
				Oct 30- Dec 11*			\$103/6 classes	161101-02
13-17	JINGLE BLADES ICE SHOW CAST – Teen	M	7:15-7:45PM	Sept 11 -Dec 4	Idaho IceWorld	Staff	\$116	161110***
13+	MARTIAL ARTS – Karate Shotokan – Mixed Level (13+)	M, W	5:30-7:30PM	Sept 6-Oct 30	Dick Eardley SC	Alvin Sablan, Jennifer Harrington	\$65/\$100.20	120334-01
				Nov 1-Dec 20*			\$53/\$81.60	120334-02

\*No class Nov 20-24 \*\*No class Sept 14 \*\*\*Registration deadline is Sept 12





## ADULT (AGES 18+)

### ART (18+)

#### CLASSES Art

A supply list for classes will be available at the first class.

#### DRAWING – All Levels

Improve both drawing and observation skills by learning about the fundamentals of line, shape, value, perspective and proportion. This is a fun, low-pressure, relaxing class. No experience or drawing ability is required!

#### DRAWING – Fall Botanical

Students will be introduced to the principals of drawing from life. Using pencil, colored pencils and watercolor, they will work on creating value and texture, framing a solid composition and building color. Specimens include fall leaves, harvest fruits and other autumnal delicacies. All skill levels welcome. All materials provided.

#### ENAMELING – Beginner

Vitreous enameling, defined as fusing glass to metal using high temperatures, is an ancient art dating back to the 13th century B.C. Students will explore a variety of techniques to create small and lovely works of art. All materials provided.

#### ENAMELING – Open Studio

The enameling open studio gives people the opportunity to work on projects of their own design, following their own interests. The instructor will be on hand to set up the studio, answer questions and assist students as needed. Students must purchase their own

supplies. Supplies and enamels are available for purchase at Fort Boise. A complete supply kit is available for \$30, more information at the first class.

#### GLASS MOSAICS – Intro

This class covers the basics of creating mosaics including types of glass, tools, rendering/cutting and grouting. Each student will create a wonderful glass mosaic piece!

#### GLASS MOSAICS – Intermediate

This Intermediate Outdoor Stepping Stone Mosaic class uses skills and knowledge learned in the Introduction to Mosaic class to design and render mosaics that can go outdoors! Students will design and render a stepping stone project using materials suited for outdoor/wet application. \*Students MUST have previous mosaic experience, as no beginner techniques will be taught in this workshop.

#### PAINTING, ACRYLIC – All Levels

Beginning students will learn the basics of acrylic painting including techniques of color, composition, texture and layering. A variety of styles and subject matter such as still-life, landscape, portrait and abstraction will be explored.

#### PAINTING, OIL – All Levels

Beginners will learn the basics of oil painting. Intermediate/advanced painters will refine their skills in traditional techniques such as underpainting, glazing and alla prima painting. No prior experience is necessary.

#### PHOTOGRAPHY – Camera Functions

Explore the “how to’s” of digital and 35mm photography. Learn shutter speed, depth of field, composition and use of attachments. Instructor will provide a supply list at the first class. Please bring your camera to the first class.



Drawing - Fall Botanical

## ART (18+)

### POTTERY – All Levels

Learn basic techniques of hand-built and wheel-thrown pottery, along with glazing and firing methods. Students with previous clay experience can refine their skills of wheel-throwing and hand-building. Wheels, glazes and firing services are provided.

### POTTERY – Hand-building

Students of all levels will enjoy the rich tradition of pottery and sculpture being made with hand-building techniques such as pinch, coil and slabs. Learn beautiful decorating processes that have been used throughout the world for centuries. Glazes and firings are provided.

### POTTERY – Level I

Beginning potters will learn basic techniques for hand-built and wheel-thrown pottery along with glazing and firing methods. Wheels, glazes and firing services are provided.

### POTTERY – Level II (3-Hr Class)

This class is for potters with previous experience. Class focuses on refining skills of throwing on the wheel and developing better hand-building construction techniques. Students will also explore advanced techniques of glazing and learn Raku and Cone 10 reduction firing. Students must have basic wheel and hand-building skills. Wheels, glazes and firings are provided.



Pottery

### POTTERY – Level II (2-Hr Class)

This class is for potters with previous experience. Class focuses on refining skills of throwing on the wheel and developing better hand-building construction techniques. Students also explore advanced techniques of glazing and learn Raku and Cone 10 reduction firing. Students must have basic wheel and hand-building skills. Wheels, glazes and firings are provided.

### POTTERY – Open Studio

Open studio sessions are available for potters to work independently on throwing, hand-building or glazing. Fee covers glazes and

firing but students must provide clay and tools. The studio is open daily and a schedule will be emailed to students as well as available at the Art Center.

### WATERCOLOR – All Levels

This class offers instruction in watercolor techniques of exploring various types of washes and composition as well as more in-depth techniques of painting will be covered for those with previous experience.

CLASS (18+)	DAY	TIME	DATE	LOCATION	INSTRUCTOR	FEE RES/NR	ACTIVITY#
DRAWING – All Levels	Tu	1-3PM	Sept 26-Nov 14	Fort Boise CC	Hallie Maxwell	\$112/\$173.05	101712-01
DRAWING – Fall Botanical	Tu	6:30-8:30PM	Sept 26-Oct 31	Foothills LC	Dot Martin	\$105.70/\$151.63	101743-01
ENAMELING – Beginner	Tu	6:30-9PM	Sept 26-Nov 14	Fort Boise CC	Rick Friesen	\$155.44/\$231.64	101102-01
ENAMELING – Open Studio	Th	6:30-9PM	Sept 21-Nov 9	Fort Boise CC	Rick Friesen	\$155.44/\$231.64	101104-01
GLASS MOSAICS – Intro	M	6:30-9:30PM	Sept 25-Oct 30	Fort Boise CC	Boise Mosaic Works	\$124.50/192.43	101728-01
GLASS MOSAICS – Intermediate	M	6:30-9:30PM	Nov 6-Dec 11	Fort Boise CC	Boise Mosaic Works	\$124.50/192.43	101729-01
PAINTING, ACRYLIC – All Levels	W	6:30-8:30PM	Sept 27-Nov 15	Fort Boise CC	Kate Masterson	\$112/\$173.05	101101-01
PAINTING, OIL – All Levels	Th	1-3PM	Sept 28-Nov 16	Fort Boise CC	Rick Friesen	\$112/\$173.05	101720-01
PHOTOGRAPHY – Camera Functions	W	6:30-8:30PM	Oct 4-25	Fort Boise CC	Bill Farnsworth	\$56.50/\$87.03	101719-01
POTTERY – All Levels	Th	6:30-9:30PM	Sept 21-Nov 9	Fort Boise CC	JoAnna Amundson	\$209.65/\$301.09	101723-01
	Tu		Sept 26-Nov 14		Kevin Flynn		101723-02
	Th		Sept 28-Nov 16				101723-03
POTTERY – Handbuilding	M	6:30-9:30PM	Sept 25-Nov 13	Fort Boise CC	Cole Calvin	\$209.65/\$301.09	101727-01
POTTERY – Level I	Th	9AM-12PM	Sept 28-Nov 16	Fort Boise CC	Cole Calvin	\$209.65/\$301.09	101722-01
POTTERY – Level II (3-Hr Class)	W	6:30-9:30PM	Sept 27-Nov 15	Fort Boise CC	David Scott	\$209.65/\$301.09	101724-01
POTTERY – Level II (2-Hr Class)	W	1-3PM	Sept 27-Nov 15	Fort Boise CC	Cole Calvin	\$154.40/\$215.45	101725-01
POTTERY – Open Studio		See Posted Schedule	Sept 25-Nov 19	Fort Boise CC	N/A	\$161.06/\$225.77	101731-01
			Nov 20-Jan 7			\$146.36/\$202.99	101731-02
WATERCOLOR – All Levels	M	6:30-8:30PM	Sept 25-Nov 13	Fort Boise CC	Rick Friesen	\$112/\$173.05	101739-01
	Tu	9:30-11:30AM	Sept 26-Nov 14				101739-02
	W		Sept 27-Nov 15				101739-03

# COOKING (18+)

## FAMILY NIGHT OUT SERIES

**ALL AGES + ADULT** Family time is best when you're learning and working together! Come to one of our Family Night Out cooking classes for some true together time in the kitchen. Students under 16 must be accompanied by a paying adult. The cost is per person and each must register.

## FOOD FOR LIFE HEALTHY BASICS

Learn dietary strategies that are both budget-friendly and accessible. Each class features a cooking demonstration with samples of delicious and health-promoting dishes, along with handouts of easy and affordable recipes participants can prepare at home.

## IMMUNE-BOOSTING FOODS –

Featured recipe: Zippy Yams and Collards

## VIRTUAL GROCERY STORE TOUR –

Featured recipe: Easy Black Bean Chili

## DIGESTIVE HEALTH –

Featured recipe: Couscous with Veggies

## AVOIDING HOLIDAY WEIGHT GAIN –

Featured recipe: Assorted Desserts

## GARDEN HAPPY HOUR

**21+ ONLY** We're pairing our delicious recipes with local beverages in these hands-on, informative cooking classes. Check our website ([boiseurbangardenschool.org](http://boiseurbangardenschool.org)) for details on each month's theme and partner. Must be over 21 to register and attend.

## FUN & HEALTHY CULINARY SERIES – Kimchi

**AGES 14+** Delicious kimchi from garden to table in this class that bridges growing veggies through the fermentation process.

## FUN & HEALTHY CULINARY SERIES – Sourdough

**AGES 14+** Simple, approachable recipes for novice and experienced sourdough bakers alike.



Family Night Out



**REGISTER FOR CLASSES STARTING AT 7AM:**  
[cityofboise.org/parks](http://cityofboise.org/parks)

**AUGUST 14** (Residents)

**AUGUST 16** (Non-residents)

CLASS (18+)	DAY	TIME	DATE	LOCATION	INSTRUCTOR	FEE RES/NR	ACTIVITY#
FAMILY NIGHT OUT SERIES – Global Cuisine: Tamales & Salsa (All Ages + Adult)	W	5-7PM	Sept 20	BUGS	Staff	\$21	124201-01
	Tu		Sept 26				124201-02
FAMILY NIGHT OUT SERIES – Halloween Spooktacular Treats (All Ages + Adult)	W		Oct 11				124201-03
	Tu		Oct 17				124201-04
FAMILY NIGHT OUT SERIES – Apple Pie ala Mode (All Ages + Adult)	W		Nov 8				124201-05
	Tu		Nov 14				124201-06
FAMILY NIGHT OUT SERIES – Ravioli (All Ages + Adult)	W		Dec 6				124201-07
	Tu		Dec 12				124201-08
FOOD FOR LIFE – Immune-Boosting Foods	F	11AM-12PM	Sept 15	Dick Eardley SC	Barbara Smith	FREE	115013-01
FOOD FOR LIFE – Virtual Grocery Store Tour			Oct 20				115013-02
FOOD FOR LIFE – Digestive Health			Nov 17				115013-03
FOOD FOR LIFE – Avoiding Holiday Weight Gain			Dec 15				115013-04
GARDEN HAPPY HOUR (21+)	Sa	3-5PM	Sept 23	BUGS	Staff	\$31	124106-01
			Oct 21				124106-02
			Nov 18				124106-03
			Dec 16				124106-04
FUN & HEALTHY CULINARY SERIES – Kimchi	Th	Sept 28 Nov 9	5:30-7:30PM	BUGS	Pohley Richey*	\$21	124203-01
FUN & HEALTHY CULINARY SERIES – Sourdough							124203-02

\*Registered Dietitian



# ENVIRONMENTAL EDUCATION (18+)

## BOISE BIRDING

Beginner to expert birders are welcome at this free class. The first hour is a birding presentation by Terry Rich followed by optional birding. Binoculars available to borrow. Pre-registration is required.

## BUGS COMMUNITY DAYS

**ALL AGES** Join us at the BUGS barn and garden for seasonally-themed activities for all! We welcome you to explore and connect with the plants, critters and people who live and work with us, and learn how to get involved with our garden community. Each session is preceded by a volunteer work shift from 9:30-11:30AM for those interested in getting their hands in the soil.

## GARDENING BASICS

**AGES 14+** Join the BUGS team to learn more about season-specific gardening topics.

## HIKE & LEARN

Join us for a fun family event at the Foothills Learning Center! We will host an evening family hike lead by a local naturalist or FLC staff. We will discover a new trail and explore new topics each month, depending on the season. Fee is per person attending.

## TOURS OF THE RESERVES

Get to know your backyard as the Foothills Learning Center and Idaho Conservation League team up to offer these short hiking “tours” of the city-owned natural reserves.

## WATERSHED STUDIO

Create beautiful and unique artwork! Classes are taught by a team of artists and experts who explore a topic and instruct you in an art method to create a one-of-a-kind piece of art. Pre-Registration is required. Class descriptions found at [boisewatershed.org](http://boisewatershed.org).

## WATERSHED TOUR TUESDAYS

Join us for a tour of the West Boise Water Renewal Facility. This 60-minute walking tour gives you a behind-the-scenes view of what happens when you flush! Learn how the City of Boise is renewing used water, recovering valuable resources and ultimately protecting the health of the Boise River! Closed-toe shoes required, ages 5 and up. Pre-registration is required through the Eventbrite link on our event calendar at [boisewatershed.org](http://boisewatershed.org).

## WATERSHED WEEKEND PROGRAMS

Join the WaterShed staff for a behind-the-scenes tour of Water Renewal Services. Bus transportation provided. Meet at Fort Boise Community Center Parking Lot. FREE admission, but registration is required through the link on the event calendar at [boisewatershed.org](http://boisewatershed.org).

## WREATH-MAKING CLASS

Using local foraged plant materials, create a unique and beautiful holiday wreath. Bring your own metal or foam wreath forms, or we will provide branches to build one. We provide evergreen branches, accent plants, wire and ribbon. Bring any materials you would like in addition to those provided.

**REGISTER ONLINE:**  
[cityofboise.org/parks](http://cityofboise.org/parks)  
**APRIL 18 (Residents)**  
**APRIL 20 (Non-residents)**

CLASS (18+)	DAY	TIME	DATE	LOCATION	FEE RES/NR	ACTIVITY#
BOISE BIRDING (All Ages + Adult)	F	9-10AM	Sept 1	Foothills LC	FREE	125015-01
			Oct 6			125015-02
			Nov 3			125015-03
			Dec 1			125015-04
BUGS COMMUNITY DAYS – Fall Festival (All Ages)	Sa	Sept 30	10AM-2PM	BUGS	FREE	N/A
GARDENING BASICS – Habitat Gardens/Weeds & Pests (14+)	Sa	9-11AM	Sept 9	BUGS	\$21	124108-01
GARDENING BASICS – Soil Health & Irrigation (14+)			Sept 23			124108-02
GARDENING BASICS – Season Extension & Seed Starting (14+)			Oct 7			124108-03
GARDENING BASICS – Garden Planning (14+)			Nov 4			124108-04
HIKE & LEARN (All Ages + Adult)	F	5:30-6:30PM	Sept 15	Foothills LC	\$5	119965-01
			Oct 20			119965-02
			Nov 17			119965-03
TOURS OF THE RESERVES – Hawkins Range Reserve	Th	5:30-6:30PM	Sept 21	Hawkins Range Reserve	FREE	119966-01
TOURS OF THE RESERVES – Military Reserve			Oct 19	Military Reserve		119966-02
TOURS OF THE RESERVES – Mesa Reserve			Nov 16	Mesa Reserve		119966-03
WATERSHED STUDIO – Lessons from Extinct Animals	F	6-9:30PM	Sept 22	Foothills LC	\$15	125006-01
WATERSHED STUDIO – Dia De Los Muertes			Oct 27			125006-02
WATERSHED TOUR TUESDAYS	Tu	9-10AM	Sept 12	Boise WaterShed	FREE	N/A
			Oct 10			
			Nov 14			
			Dec 12			
WATERSHED WEEKEND PROGRAMS – Biosolids Farm Tour (All Ages + Adult)	Sa	9:30AM-12PM	Sept 23	Boise WaterShed	FREE	N/A
WATERSHED WEEKEND PROGRAMS – Water Recycling Pilot Tour (18+)			Oct 14	Fort Boise CC		
WREATH-MAKING CLASS	F	5:30-7PM	Dec 8	Foothills LC	\$16	119969-01
			Dec 15			119969-02

# GOLF (18+)



Golf Lessons

## GOLF LESSONS

Classes will cover full-swing, stance, grip, short game, chipping and putting. All classes are open to any skill level, from beginner to advanced and will have on course instruction.

## ONE-DAY GOLF SCHOOL WITH A PGA PRO

A comprehensive workshop for a smaller group of golfers who want to spend a day with two golf professionals! This program will be instructed by Peter Nichenko, PGA Golf Professional, John Russell, Assistant Golf Professional or Stu Hampton, Assistant Golf Professional.



**REGISTER FOR CLASSES  
STARTING AT 7AM :**  
[cityofboise.org/parks](http://cityofboise.org/parks)

**AUGUST 14** (Residents)  
**AUGUST 16** (Non-residents)

CLASS	DAY	TIME	DATE	LOCATION	FEE	ACTIVITY#
GOLF LESSONS – Quail Hollow	Tu-Th	6-7:30PM	Aug 22-24	Quail Hollow GC	\$99	471001-07
			Aug 29-31			471001-08
			Sept 5-7			471001-09
			Sept 12-14			171001-01
			Sept 19-21			171001-02
			Sept 26-28			171001-03
			Oct 3-5			171001-04
			Oct 10-12			171001-05
GOLF LESSONS – Warm Springs	Tu-Th	6-7:30PM	Aug 22-24	Warm Springs GC	\$99	481001-11
			Aug 29-31			481001-12
			Sept 5-7			481001-13
			Sept 12-14			181001-01
			Sept 19-21			181001-02
			Sept 26-28			181001-03
			Oct 3-5			181001-04
		Oct 10-12	181001-05			
		10:30AM-12PM	Sept 5-7			181002-01
			Sept 12-14			181002-02
			Sept 19-21			181002-03
			Oct 3-5			181002-04
			Oct 10-12			181002-05
			Oct 17-19			181002-06
ONE-DAY GOLF SCHOOL W/ A PGA PRO	Th		9AM-4PM	Aug 24	Quail Hollow GC	\$169
		Sept 7		471101-02		
		Sept 21		171101-01		
		Oct 5		171101-02		
		Oct 19		171101-03		

# PERFORMING ARTS (18+)

## AFRICAN INSPIRED DANCE – Beginner

This beginner class explores the rhythm and movements inspired by Guinea West Africa. Class time will be spent igniting joy, passion and a sense of community while dancing barefoot to (recorded) drumming and other popular music. Class approach to dance allows students to feel comfortable to be open in their bodies and explore their inner rhythm.

## BALLET – Beginner

Always dreamed of learning ballet but never had the chance? This unique class lets you enter the world of classical ballet for the first time and from the most basic level. No special clothing required, just come ready to move and dressed comfortably.

## FLAMENCO – Beginner & Advanced

Students will learn basic steps, body positioning and the flow of arm/hand movement. We will work on percussive steps and brazeo (arms) and how to coordinate them into a short dance piece. Advanced students will focus on more intricate footwork/ choreography. Through a fiery Flamenco song list, we will keep our focus on dancing for fun while building our self-confidence and coordination. No partner needed!

## TAP – Beginner & Intermediate

Tap classes are fun, challenging and

guaranteed to make you feel like you had a great workout! BEGINNER class is for those who have never tapped before or tapped when very young. If you've tapped awhile and are ready for the next level of skill sets, the INTERMEDIATE class is perfect for you. If you are unsure what level is best, feel free to speak with the instructor.

## TAP – Advanced Masters

If you are a serious tap dancer with six or more years of tap training and want to be

challenged, push yourself, learn different tap choreography and have fun, this is the class for you! Choreography will be anything from blues tap, rock, jazz tap and musical theater tap.

## TAP DANCING DIVAS – Experienced

AGES 55+ Dancing has no age limit. Move your feet and make your spirits soar! The choreography is low impact yet challenging. The music is upbeat and fun to tap to.



### INFORMATION Dance

Adult performing arts is an ongoing learning experience helping to enhance strength, flexibility and coordination, all while having fun in a friendly environment!

CLASS (18+)	DAY	TIME	DATE	LOCATION	INSTRUCTOR	FEE RES/NR	ACTIVITY#
AFRICAN INSPIRED DANCE – Beginner	Th	7-8PM	Sept 7-Oct 26	Dick Eardley SC	Brenda Kruller & Meridian Lin Negilski	\$67/\$103.32	111743-01
			Nov 2-Dec 21*			\$58.75/\$90.53	111743-02
BALLET – Beginner	M	5:45-6:45PM	Sept 11-Oct 23	Dick Eardley SC	Stephanie Hinton	\$58.75/\$90.53	111502-01
			Oct 30-Dec 18*			\$58.75/\$90.53	111502-02
FLAMENCO – Beginner	Tu	6:45-7:45PM	Sept 5-Oct 24	Dick Eardley SC	Estefania Sanchez	\$67/\$103.32	111704-01
			Oct 31-Dec 19*			\$58.75/\$90.53	111704-02
FLAMENCO – Advanced	Tu	6:45-8:15PM	Sept 5-Oct 24	Dick Eardley SC	Estefania Sanchez	\$100.04/\$154.52	111704-03
			Oct 31-Dec 19*			\$87.66/\$135.33	111704-04
TAP – Beginner	Tu	7-8PM	Oct 3-31	Fort Boise CC	Kay Mack	\$42.25/\$64.95	111734-01
			Nov 7-Dec 19*			\$50.50/\$77.74	111734-02
TAP – Intermediate	Th	6-7PM	Oct 5-Nov 2	Fort Boise CC	Kay Mack	\$42.25/\$64.95	111734-05
			Nov 9-Dec 21*			\$50.50/\$77.74	111734-06
TAP – Advanced Masters	Tu	6-7PM	Oct 3-31	Fort Boise CC	Kay Mack	\$42.25/\$64.95	111735-01
			Nov 7-Dec 19*			\$50.50/\$77.74	111735-02
TAP DANCING DIVAS – Experienced (55+)	Th	1-2PM	Oct 5-Nov 2	Fort Boise CC	Kay Mack	\$42.25/\$64.95	111701-01
			Nov 9-Dec 21*			\$50.50/\$77.74	111701-02

\*No class Nov 20-24



## SOCIAL PARTNER DANCING (18+)

### COUNTRY SWING – Beginner

Country Swing is a great place to start learning partner dancing. The patterns are easy to pick up and students will be able to jump onto the dance floor with confidence in no time at all! No experience necessary. Must register with a partner.

### COUNTRY SWING – Intermediate

After completing the Beginner Country Swing class, you're ready to take it to the next level and learn some fun new dips and tricks. This class expands on the fundamentals. Students must take the Beginner Country Swing class first or have approval from the instructors. Must register with a partner.

### LINE DANCE

Learn some of the most popular and common line dances that are great for weddings, parties or just a night out. Line dances include Boot Scootin' Boogie, The Hustle, Electric Slide, Footloose and more. No experience necessary. No partner needed.

### SALSA – Beginner

Danced and performed all around the world, salsa is one of the most recognized social dances of all time. We will learn basic Lead and Follow technique, beginner combos and short routines to help students transition between moves. No experience necessary. Must register with a partner.

### SWING LINDY HOP – Beginner

This dance was created in the late 1920s as a variation on the Charleston. Named after Charles Lindberg and his famous 'Hop' over the Atlantic, the Lindy Hop was danced to the Big Bands of the 30s and 40s. No experience necessary. Must register with a partner.

### SWING WEST COAST – Beginner

West Coast Swing is a modern dance defined by its smooth style, versatility and playful nature. Whether you enjoy Top 40, Country or Hip Hop, this is the dance for you! No experience necessary. Must register with a partner.



### CLASSES

## Social Partner Dancing

Joel brings 20+ years of Social Partner dancing and instruction, signature style and method will get you movin' and groovin' in no time. Whether you're headed to a wedding or out on the town, these classes will give you the edge you need to feel confident on the dance floor. **MUST REGISTER WITH A PARTNER** (except for Line Dance). We will not rotate partners.

CLASS (18+)	DAY	TIME	DATE	LOCATION	FEE RES/NR	ACTIVITY#
COUNTRY SWING – Beginner**	W	7-8PM	Aug 30-Sept 20	Dick Eardley SC	\$34/\$52.16	111547-01
			Sept 27-Oct 18			111547-02
			Oct 25-Nov 15			111547-03
			Nov 29-Dec 20			111547-04
COUNTRY SWING – Intermediate**	W	6-7PM	Aug 30-Sept 20	Dick Eardley SC	\$34/\$52.16	111546-01
			Sept 27-Oct 18			111546-02
			Oct 25-Nov 15			111546-03
			Nov 29-Dec 20			111546-04
LINE DANCE	W	8-9PM	Aug 30-Sept 20	Dick Eardley SC	\$34/\$52.16	111548-01
			Sept 27-Oct 18			111548-02
			Oct 25-Nov 15			111548-03
			Nov 29-Dec 20			111548-04
SALSA – Beginner**	F	6-7PM	Sept 1-22	Dick Eardley SC	\$34/\$52.16	111726-01
			Sept 29-Oct 20			111726-02
			Oct 27-Nov 17*		\$25.75/\$39.37	111726-03
			Dec 1-22		\$34/\$52.16	111726-04
SWING LINDY HOP – Beginner **	F	7-8PM	Sept 1-22	Dick Eardley SC	\$34/\$52.16	111736-01
			Sept 29-Oct 20			111736-02
			Oct 27-Nov 17*		\$25.75/\$39.37	111736-03
			Dec 1-22		\$34/\$52.16	111736-04
SWING WEST COAST – Beginner**	F	8-9PM	Sept 1-22	Dick Eardley SC	\$34/\$52.16	111745-01
			Sept 29-Oct 20			111745-02
			Oct 27-Nov 17*		\$25.75/\$39.37	111745-03
			Dec 1-22		\$34/\$52.16	111745-04

\*No class Nov 10 \*\*Must register with a partner

# SPORTS/FITNESS (18+)

**NEW HIIT – HIGH INTENSITY INTERVAL TRAINING – All Levels**

HIIT classes incorporate bursts of strength and cardio movements with brief rest periods. Exercises target full-body movements that will challenge participants throughout the fun-packed 50-min class. Potential benefits from participation in this class include weight loss and muscle gain. Trainer will work with all levels. Be prepared to work hard and have a blast!

**ICE SKATING – Free Skate 1-6 (Prerequisite Pre-Free Skate)**

AGES 7+ See page 29 for more information.

**ICE SKATING – Teen & Adult 1-6**

AGES 13+ See page 18 for more information.

**ICE-SKATING PRE-FREE SKATE (Prerequisite Basic 6 or Teen/Adult 6)**

AGES 7+ See page 29 for more information.

**JINGLE BLADES ICE SHOW CAST MEMBER**

AGES 18+ See page 18 for more information.

**PASSES**

**Fort Boise Community Center**

Affordable daily, monthly and annual passes are available. Passes include access to the cardio equipment (12+), weight room (18+)\*\*\*, showers/locker rooms (18+), as well as the gymnasium for drop-in activities. Cardio equipment and weight room includes stair machines, exercise bikes, universal-style weight stations, treadmills, elliptical cross-trainers and free weights. See rates below (includes sales tax). Prices below will be effective Oct 1, 2023.

**DAILY DROP-IN PASS (includes sales tax)**

- Teen Priority Time\* (12-17) . . . . . \$1.25
- Youth\* (12-17). . . . . \$3.50
- Adult (18-61) . . . . . \$5
- Senior (62+) . . . . . \$4

**ADULT (18-61) (includes sales tax)**

- Monthly Pass – Resident . . . . . \$26
- Monthly Pass – Non-Resident . . . \$40.30
- Annual Pass – Resident . . . . . \$250
- Annual Pass – Non-Resident . . . \$387.50

**YOUTH (12-17)\*\* (includes sales tax)**

- Monthly Pass – Resident . . . . . \$12
- Monthly Pass – Non-Resident . . . \$18.60
- Annual Pass – Resident . . . . . \$140
- Annual Pass – Non-Resident . . . . \$217

**SENIOR (62+) (includes sales tax)**

- Monthly Pass – Resident . . . . . \$20
- Monthly Pass – Non-Resident . . . . \$31
- Annual Pass – Resident . . . . . \$209
- Annual Pass – Non-Resident . . . \$323.95

\*Pass includes access to gym equipment and weight room for those over 16. Teen Priority time 3-5:30PM.

Gym and Teen Activity Center are free during this time for teens only.

\*\*Guardian presence is required for those under 12 yrs old.

\*\*\*Youth 12-17 may access weight room with guardian.

CLASS (18+)	DAY	TIME	DATE	LOCATION	INSTRUCTOR	FEE RES/NR	ACTIVITY#
HIIT – HIGH INTENSITY INTERVAL TRAINING – All Levels	Tu	7-7:50PM	Sept 5-26	Fort Boise CC	Bekah Eisele	\$31/\$47.50	105745-01
			Oct 3-31			\$38.50/\$59.13	105745-02
			Nov 7-28			\$31/\$47.50	105745-03
			Dec 5-19			\$23.50/\$35.88	105745-04
	Th	5:15-6:05 PM	Sept 7-28			105745-05	
			Oct 5-26			105745-06	
			Nov 2-30*			105745-07	
			Dec 7-28			105745-08	
		6:15-7:05 PM	Sept 7-28			105745-09	
			Oct 5-26			105745-10	
			Nov 2-30*			105745-11	
			Dec 7-28			105745-12	
		7:15-8:05 PM	Sept 7-28			105745-13	
			Oct 5-26			105745-14	
			Nov 2-30*			105745-15	
			Dec 7-28			105745-16	
ICE SKATING – Free Skate 1-6 (Prerequisite Pre-Free Skate) (7+)	Th	5:45-6:15PM	Sept 7-Oct 26** Nov 2-Dec 14*	Idaho IceWorld	Staff	\$120/7 classes \$103/6 classes	161100-01 161100-02
ICE SKATING – Teen & Adult 1-6 (13+)	M	6:45-7:15PM	Sept 11- Oct 23 Oct 30- Dec 11*	Idaho IceWorld	Staff	\$120/7 classes \$103/6 classes	161101-01 161101-02
ICE SKATING – Pre-Free Skate (Prerequisite Basic 6 or Teen/Adult 6) (7+)	Th	5:45-6:15PM	Sept 7-Oct 26** Nov 2-Dec 14*	Idaho IceWorld	Staff	\$120/7 classes \$103/6 classes	161010-01 161010-02
JINGLE BLADES ICE SHOW CAST (18+)	M	7:15-7:45PM	Sept 11-Dec 4	Idaho IceWorld	Staff	\$116	16110***

\*No class Nov 20-24 \*\* No class Sept 14 \*\*\*Registration deadline is Sept 12

## SPORTS/FITNESS (18+) CON'T



Lady Gears Mountain Bike Camp

### **NEW** InBODY BODY COMPOSITION SCAN

Numbers from a bathroom scale won't tell how much of the weight is muscle or fat. Go beyond the scale with the InBody Test, a noninvasive, quick and accurate body composition analysis that provides a detailed breakdown of your weight in terms of muscle, fat and water. Your comprehensive yet easy-to-understand measurements will display on an InBody Result Sheet in minutes. Measure numbers that better reflect your health and fitness goals with precision and actionable objectives.

For best results, do not consume alcohol 24 hours before scan, and no caffeine, food or exercise for at least 3 hours prior to the scan. For comparison scans, wait at least 2-4 weeks between scans and measure roughly at the same time of day in similar conditions. Scans only take 5 min. If appointments do not work with your schedule, call Fort Boise at 208-608-7680 for other options.

### **LADY GEARS MOUNTAIN BIKE CAMP – Beginner**

**AGES 16+** This mountain biking class will begin with the 5-core mountain bike skills, body position, braking, climbing, descending and cornering. Riders will work to gain confidence in braking and using gears at the appropriate

times and focus on climbing with proper body mechanics before learning how to safely descend. We will introduce how to handle rocks and gain speed while in control. Riders need to bring a maintained mountain bike. Please no e-bikes.

### **MARTIAL ARTS – Karate Shotokan – Mixed Level**

**AGES 13+** Learn traditional Shotokan Karate including dojo etiquette, warm-up, Kihon, Katas and Kumite. Class will focus on Kihon or basic techniques (blocks, punches, kicks and stances) and Katas or prearrange forms (formal exercise) and Kumite or sparring as students progress.

### **MEDITATION**

Start the day out right! This class explores mindfulness with a variety of techniques to be calm with your thoughts and to feel stillness. Beginners welcome. Students may need to do some stretching and slow walking. Bring a blanket to stay warm and something firm to sit on like a cushion or yoga bolster.

### **PICKLEBALL BOOTCAMP – Beginner**

Beginner students learn serving, returns and scoring. The day ends with round-robin play.

### **PICKLEBALL BOOTCAMP – Intermediate**

Players learn game strategy tactics and movement patterns. The day ends with round-robin play.

### **PICKLEBALL LADDER LEAGUES**

**AGES 16+** An organized league where players with similar skills compete against each other in a competitive, structured weekly format. Think of a pickleball “ladder” as a graphical representation of a player’s ranking (by skill and performance) over time. The ladder’s rungs represent a player’s current position (ranking) on the ladder relative to the other players. The top rung is the individual currently ranked the highest (the best winning percentage) and the bottom rung is the lowest-ranked individual or team. The ultimate goal is to climb the ladder to the highest rung. Please see the online registration site for a complete description.

### **PICKLEBALL LESSONS – Beginner**

Brand new to pickleball, never played and want a better understanding of the basics? Learn basic rules, scoring and strokes. Class prepares you for beginner drop-in play. Students may sign up for more than one session. Bring your own paddle or paddles may be available for use at the site.

### **PICKLEBALL LESSONS – Advanced Beginner**

This is for players that have played some pickleball, possibly even taken a class or two yet are still unsure of their game. Class will help develop skills and make it more comfortable to go out and play with others.

### **PICKLEBALL LESSONS – Intermediate**

Players that have played pickleball longer and are looking to refine their skills and become more consistent on the court.

### **PICKLEBALL LESSONS – Lower Intermediate**

Players that have played quite a bit and have the basic skills. This class will work on drills and game strategy.

### **PILATES**

Enjoy a series of non-impact exercises to develop strength, flexibility, balance and inner awareness while strengthening abs, obliques and back muscles. Muscles are strengthened and lengthened without creating bulk, which is helpful in preventing and rehabilitating from injuries.



# SPORTS/FITNESS (18+) CON'T

CLASS (18+)	DAY	TIME	DATE	LOCATION	INSTRUCTOR	FEE RES/NR	ACTIVITY#
InBODY BODY COMPOSITION SCAN	M	9AM- 1PM*	Oct 2	Fort Boise CC	Staff	\$25	105744-01
	W	8AM-12PM*	Oct 18				105744-02
	Th	8AM-12PM*	Nov 2				105744-03
	W	8AM-12PM*	Nov 15				105744-04
	Tu	8-10AM*	Dec 12				105744-05
LADY GEARS MOUNTAIN BIKE CAMP – Beginner	Tu-Th	5-7PM	Oct 3-5	Fort Boise CC	Staff	\$38.50/\$59.13	120746-01
MARTIAL ARTS – Karate Shotokan – Mixed Level (13+)	M,W	5:30-7:30PM	Sept 6-Oct 30	Dick Eardley SC	Alvin Sablan, Jennifer Harrington	\$65/\$100.20	120334-01
			Nov 1-Dec 20**			\$53/\$81.60	120334-02
MEDITATION	Th	10-10:30AM	Sept 7-28	Fort Boise CC	Mike McClenahan	\$16/\$24.25	105714-01
			Oct 5-26				105714-02
			Nov 2-30**				105714-03
			Dec 7-28				105714-04
PICKLEBALL BOOTCAMP – Beginner	Sa	1-4PM	Sept 23	Hobble Creek Park	Duane Stotland	\$28/\$42.85	150139-01
			Oct 21				150139-02
PICKLEBALL BOOTCAMP – Intermediate	Sa	1-4PM	Sept 9	Hobble Creek Park	Duane Stotland	\$28/\$42.85	150139-03
			Oct 7				150139-04
PICKLEBALL – LADDER LEAGUE 2.5 (16+)	W	9-10AM	Sept 13-Oct 4	Willow Lane AC	Staff	\$25/\$38.20	450140-07
	Th	6-7PM	Sept 14-Oct 5				450140-08
PICKLEBALL – LADDER LEAGUE 3.0 (16+)	M	10-11AM	Sept 11-Oct 2	Hobble Creek Park	Staff	\$25/\$38.20	450141-10
	Th	7-8PM	Sept 14-Oct 5				450141-11
	Tu	9-10AM	Sept 12-Oct 3				Manitou Park
PICKLEBALL – LADDER LEAGUE 3.5 (16+)	Tu	6-7PM	Sept 12-Oct 3	Manitou Park	Staff	\$25/\$38.20	450142-08
	Th	9-10AM	Sept 14-Oct 5				450142-09
PICKLEBALL – LADDER LEAGUE 4.0 (16+)	M	6-7PM	Sept 11-Oct 2	Hobble Creek Park	Staff	\$25/\$38.20	450143-04
PICKLEBALL LESSONS – Beginner	Tu	10-11:30AM	Sept 5-26	Hobble Creek Park	Jennifer Hunt	\$55/\$84.72	150137-01
	M		Sept 11-Oct 2	Mt. View Park			150137-02
	W	12:30-2PM	Oct 4-25	Fort Boise CC	150137-03		
	W	8-9:30AM	Nov 1-29**		Duane Stotland		150137-04
PICKLEBALL LESSONS – Advanced Beginner	Tu	11:30AM-1 PM	Sept 5-26	Hobble Creek Park	Jennifer Hunt	\$55/\$84.72	150137-05
	M	11:30AM-1 PM	Sept 11-Oct 2	Mt. View Park			150137-06
	W	11AM-12:30PM	Oct 4-25	Fort Boise CC	Duane Stotland		150137-07
		9:30-11AM	Nov 1-29**				150137-08
PICKLEBALL LESSONS – Intermediate	W	9:30-11AM	Sept 6-27	Phillippi Park	Duane Stotland	\$55/\$84.72	150138-01
	Th	10-11:30AM	Sept 7-28	Mt. View Park			150138-02
	W	8-9:30AM	Oct 4-25	Fort Boise CC			150138-03
		12:30-2PM	Nov 1-29**				150138-04
PICKLEBALL LESSONS – Lower Intermediate	W	11AM-12:30PM	Sept 6-27	Phillippi Park	Duane Stotland	\$55/\$84.72	150138-05
	Th	11:30AM-1PM	Sept 7-28	Mt. View Park			150138-06
	W	9:30-11AM	Oct 4-25	Fort Boise CC			150138-07
		11AM-12:30PM	Nov 1-29**				150138-08
PILATES	W	12-1PM	Sept 6-27	Fort Boise CC	Mike McClenahan	\$31/\$47.50	105701-01
			Oct 4-25			\$31/\$47.50	105701-02
			Nov 1-29			\$38.50/\$59.13	105701-03
			Dec 6-27			\$31/\$47.50	105701-04

\*Registration will be available in 15-minute increments. \*\*No class Nov 20-24 \*\*\*No class Sept 14

# SPORTS/FITNESS (18+) CON'T



Gentle Yoga

## STRENGTH & TONE – Early Risers

Looking for a light to moderate intensity class? This is for you! With a light cardio warm up, we use strength training to tone your body with resistance bands, light weights and body weights.

## STRENGTH TRAINING

A combination class for adults of all ages. Get a full-body workout using machines and other resistance equipment featuring individual instruction on proper form and technique. Participants will make gains in muscular strength and flexibility.

## TAI CHI & QIGONG – Beginner

This course is an introduction to a version of Yang Style Tai Chi as modified and taught by Cheng Manching. Students will learn the basic principles of Tai Chi and how to do this Tai Chi form. Students will also learn an 18 movement Qigong (Chi gong) routine.

## TAI CHI & QIGONG – Intermediate

Students will learn the entire 37 Posture Form as taught by Cheng Manching. Students must complete the beginner course or get approval from the instructor to enroll in the intermediate course.

## TENNIS – Intermediate

For athletic students who lack consistency in a rally but can coordinate footwork when contacting the ball on the forehand and backhand. These students keep score, serve (but double fault frequently), and understand the basic rules.

## YOGA – All Levels

Yoga improves flexibility, strength and balance. As part of this practice, one builds awareness and the ability to relax. Bring a mat and dense blanket. Beginners are welcome.

## YOGA – Gentle

Beginners welcome. Movements will be adapted to a variety of fitness levels. Class uses chairs and other props for support. Improve your flexibility, balance and strength. This class does not get down on the floor.

CLASS	DAY	TIME	DATE	LOCATION	INSTRUCTOR	FEE RES/NR	ACTIVITY#			
STRENGTH & TONE – Early Risers	Tu, Th	8-8:45AM	Sept 5-28	Fort Boise CC	Anne Schorzman	\$41/\$63	105716-01			
			Oct 3-26				105716-02			
			Oct 31-Nov 30*				105716-03			
			Dec 5-21				105716-04			
STRENGTH TRAINING – Mondays & Wednesdays	M, W	11AM-12PM	Sept 6-27	Fort Boise CC	Jamie Stevens	\$44.75/\$68.81	105705-01			
			Oct 2-25				105705-02			
			Oct 30-Nov 29				105705-03			
			Dec 4-27**				105705-04			
STRENGTH TRAINING – Fridays	F	11AM-12PM	Sept 8-29	Fort Boise CC	Jamie Stevens	\$26/\$39.75	105725-01			
			Oct 6-27				105725-02			
			Nov 3-Dec 1***				105725-03			
			Dec 8-29				105725-04			
TAI CHI & QIGONG – Beginner	Th	3-4PM	Sept 7-Oct 12	Dick Eardley SC	Doug Myers	\$40/\$61.45	115009-01			
			Oct 26-Dec 7*				115009-02			
TAI CHI & QIGONG – Intermediate	Th	2-3PM	Sept 7-Oct 12	Dick Eardley SC	Doug Myers	\$40/\$61.45	115019-01			
			Oct 26-Dec 7*				115019-02			
TENNIS – Intermediate	Tu	7:30-9PM	Sept 5-26	Ann Morrison Park	Duane Stotland	\$55/\$84.70	151042-01			
			Oct 3-24	Fort Boise Park			151042-02			
YOGA – All Levels	Tu	12-1PM	Sept 5-26	Fort Boise CC	Mike McClenahan	\$31/\$47.50	105704-01			
			Oct 3-31				105704-02			
			Nov 7-28				105704-03			
			Dec 5-19				105704-04			
	Th	9-10AM	Sept 7-28				Fort Boise CC	Mike McClenahan	\$31/\$47.50	105704-05
			Oct 5-26							105704-06
			Nov 2-30*							105704-07
			Dec 7-28							105704-08
YOGA – Gentle	W	10:30-11:30AM	Sept 6-27	Dick Eardley SC	Mike McClenahan	\$27/\$41.30	115007-01			
			Oct 4-25				115007-02			
			Nov 1-29*				115007-03			
			Dec 6-27				115007-04			

\*No class Nov 20-24 \*\*No class Dec 25 \*\*\*No Class Nov 10 & 24

# SPORTS/FITNESS (18+) CON'T

## League Play (16+)



### BASKETBALL

#### 5-ON-5 BASKETBALL LEAGUE

This league is open for all levels of basketball play; from competitive down to friendly rec leagues. Rosters can include up to 13 players, with 5 on the court. This league plays 1 game per week; games are M-Th between 6-9PM and are located at Boise School District Jr High and High Schools. The city provides 2 officials and a scorekeeper per game. The league includes 10 games and an optional end of season tournament.

ELIGIBILITY:	(16+) Men's and Women's
LEAGUE PLAY:	Nov 27-Feb 23
LOCATION:	Boise School District Jr High/High Schools
SCHEDULE:	Teams play M-F evenings and can submit special schedule requests.
FEES:	\$767.50 Team Fee; \$20 Non-Resident Player Fee
REGISTRATION:	Oct 16-Nov 3
END OF SEASON TOURNAMENT (OPTIONAL):	\$120 Feb 27-March 14

### VOLLEYBALL

#### COED WINTER ADULT VOLLEYBALL LEAGUE

This league is open to players of all abilities, Power division is our most competitive and Competitive 7 is our most recreational league. Teams play one game per week on the assigned night of your division. The city provides one referee per game and the top 50% in each division will move into a single elimination bracket.

DIVISIONS:	Coed Power, Competitive 1-7
ELIGIBILITY:	(16+) Men's and Women's
LEAGUE PLAY:	Nov 27-Feb 23. Top 50% of each division move into a single elimination tournament.
LOCATION:	Fort Boise Community Center, Fairmont Jr. High, South Jr. High, Timberline
SCHEDULE:	Teams play M-F evenings and can submit special schedule requests.
FEES:	\$384 Team Fee; \$20 Non-Resident Player Fee
REGISTRATION:	Oct 16-Nov 3



## Fort Boise Community Center Adult Drop-In Activities

REMEMBER! NO ADDITIONAL FEE FOR MONTHLY OR ANNUAL PASS HOLDERS.

### BADMINTON

All skill levels welcome.

AGES	16+
DAY/TIME*	F / 6-9PM Continuous Su / 2-5PM Oct 1-April 28
LOCATION	Fort Boise CC
FEE	\$5/day Adult, \$4/day Senior (62+)



### VOLLEYBALL

Indoor court, locker room and showers provided. No registration necessary. All skill levels welcome.

AGES	16+
DAY/TIME*	Sa / 9AM-1PM Su / 10AM-2PM
DATES	Oct 1-April 28
LOCATION	Fort Boise CC
FEE	\$5/day Adult, \$4/day Senior (62+)

### BASKETBALL

Indoor court, locker room and showers provided. No registration necessary. All skill levels welcome.

AGES	16+
DAY/TIME*	M / 11:30AM-2PM
DATES	Continuous
LOCATION	Fort Boise CC
FEE	\$5/day Adult, \$4/day Senior (62+)

### PICKLEBALL

All skill levels welcome. Some paddles will be available for use. Please bring paddles if you have your own.

AGES	16+
DAY/TIME*	Tu, Th / 11AM-3PM F / 9AM-2PM
LOCATION	Fort Boise CC
DATES	Oct 3-Apr 30
FEE	\$5/day Adult, \$4/day Senior (62+)

### VOLLEYBALL FOR SENIORS

All skill levels welcome.

AGES	50+
DAY/TIME*	M / 9-11:30AM
LOCATION	Fort Boise CC
DATES	Continuous
FEE	\$4/day Senior (62+)

*\*Dates and times are subject to change*

CITY of BOISE

# GET INVOLVED!

The City of Boise offers virtual participation in city meetings.



Learn more and view the calendar online.

CITYOFBOISE.ORG/PUBLIC-MEETINGS



## READY TO RAKE?

Get the City of Boise Resident Leaf Collection Guide at

CITYOFBOISE.ORG/COMPOST






# BOISE DEPOT OPEN HOUSES AND TOURS

2603 W Eastover Terrace



## GUIDED TOUR HOURS

Sundays  
Noon & 1:30 p.m.

## OPEN HOUSE HOURS

Sundays & Mondays  
11 AM – 5 PM  
(Closed legal holidays)

Come take a FREE tour of this historic building and grounds. All ages welcome!



DICK EARDLEY SENIOR CENTER

# CRAFT



Offering one-of-a-kind items that are hand-made locally by folks 50 and older.



SHOP MON-FRI, 10AM-2PM

690 ROBBINS ROAD

208-608-7580



# BOISE SKILLS ACADEMY

ON + OFF ICE  
INSTRUCTION

SKILL DEVELOPMENT

in partnership with Idaho IceWorld

[CDAHOCKEYACADEMY.COM/BOISE](http://CDAHOCKEYACADEMY.COM/BOISE)

OPEN TO EVERYONE!



# WHEELCHAIR SPORTS

WHEELCHAIR RUGBY + BASKETBALL

The city offers wheelchair rugby and wheelchair basketball and anyone can play.

Sports wheelchairs are provided. You don't need to use a wheelchair to participate.

Get a great workout and try something new! Dates and details on page 59 of the Activity Guide or call 208-608-7680 to learn more.



# ZOO BOISE (18+)



Sunset at the Zoo

## FANTASTIC CREATURES – The Secrets of the Zoo

**AGES 21+** Join other magizooologists to learn about the crazy creatures in Zoo Boise’s collection. Who is your patronus? Be it a lion, badger or eagle, all houses (even you snakes) are welcome! Come join us for an evening of learning and fun. Class includes up-close animal encounters but please note, no boa constrictors will be released during this program. Pop into our Warthog’s Head Inn for a treat and we will have beer, cider and wine available for purchase.

## SUNSET AT THE ZOO

**AGES 21+** See Zoo Boise in a whole new light! Experience the zoo after hours, learn about the daily rhythm of animals, and how we accommodate them. Enjoy a guided tour where you may see different animals and different behaviors after hours. Together we will have an evening of fun activities, up close animal encounters and seasonal appetizers. Beer, cider and wine available for purchase.

CLASS	DAY	TIME	DATE	LOCATION	FEE RES/NR	ACTIVITY#
FANTASTIC CREATURES – The Secrets of the Zoo (21+)	Th	6-8PM	Oct 26	Zoo Boise	\$40*	130280-01
SUNSET AT THE ZOO (21+)	Th	6-8PM	Nov 16	Zoo Boise	\$40*	130282-01

*\*This activity qualifies for the FoZB discount.*



## ANNUAL KIDS SHOPPING SPREE

### Donations Accepted All Year

Donations are needed to take youth from Boise Parks and Recreation’s after school programs shopping for holiday gifts for themselves and their families.

To donate, visit [cityofboise.org/donations](http://cityofboise.org/donations)



PARKS AND RECREATION

A unique city is defined by the quality of its arts and richness of its history.

Experience Boise through a variety of in-person and online cultural offerings including exhibitions, lectures, talks and tours, and other community events.



BOISE CITY DEPT OF ARTS & HISTORY

[boiseartsandhistory.org](http://boiseartsandhistory.org)



# THE CITY OF BOISE IS HIRING

WIDE



OPEN

**YOU:** GOOD HUMAN  
**US:** HIRING GOOD HUMANS

Learn why the City of Boise is an amazing place to work, and how you can join our team of community-serving-super-humans.

Capes not included.

**208.972.8090** | [cityofboise.org/JoinUs](http://cityofboise.org/JoinUs)



IMAGINE THAT.



## OLDER ADULTS (AGE 62+)

### Lifetime and Leisure Programs


One-day adult education, leisure and social programs offer a variety of opportunities to get out and enjoy Boise and the surrounding area. Come with us and explore the hidden gems in Boise and learn more about our great city. Transportation for programs provided from one or more of the community centers. If minimum enrollment is not met at one site, you may be asked to meet at a different location for transportation. Return times for many programs are approximate as travel and question/answer time can vary.


**\*\* Seating on the shuttle will be based on registration. Please contact the program staff if you have concerns.**


#### ACTIVITY LEVEL GUIDE

Some day trips require a lot of standing, walking or climbing stairs. Please refer to the key below for activity level of each activity.

 = this activity involves stairs

 = light standing or walking

 = long periods of standing, light walking

 = walking 1 mile or more/standing on hard surfaces

#### LOCATION KEY:

**DESC** – Dick Eardley Senior Center (690 Robbins Rd, Boise, ID)

**WCC** – Whitney Community Center (1609 S Owyhee St, Boise, ID)

**MNCC** – Morley Nelson Community Center  
(7701 W Northview St, Boise, ID)

## LIFETIME AND LEISURE (62+)

### ART IN THE PARK

Enjoy this Boise tradition and leave the driving to us! Grab a friend and join others for a fun afternoon in the park. Art, food, friends and fun!

### BASQUE BLOCK TOUR

Spend the afternoon on the Basque Block. Tour the Basque Market, have lunch at a Basque restaurant and take a tour of the museum to learn about the Basque culture and its presence in Idaho. Cost of lunch is on your own.

### BEE FARM TOUR

Visit a local bee apiary and learn about the work they do to help pollinate crops across the northwest, as well as the products they create. We will stop for lunch on our way. Cost of lunch is on your own.

### BIRDS OF PREY FLIGHT SHOW

The World Center for Birds of Prey is located right here in Boise, ID. See the education birds fly outdoors, where they swoop and soar over the heads of audiences to show off their amazing aerial skills.

### BOISE LITTLE THEATER

Dinner and a show! We will go to dinner as a group then to Boise Little Theater for Agatha Christie's: The Murder of Roger Ackroyd.

### CEMETERY TOUR

For well over 100 years, Morris Hill Cemetery has served as a repository of the city's history and as a reflection of the growth and development of Boise and the West. Take a brief journey into our past and emerge with a greater appreciation for our history and a reverence for those who made it.

## LIFETIME AND LEISURE (62+)

### COFFEE TASTING 🍷

Visit Dawson Taylor Coffee roasters for a lesson on the roasting process and coffee tasting. Trip includes coffee and food samples as well as a bag of specialty coffee to take home.

### CRAFT & LUNCH 🍷

Let's venture to Meridian! We will stop for lunch then go to Wood & Root to paint Christmas-themed door hangers. Fee includes all supplies for craft. Cost of lunch is on your own.

### DIA DE LOS MUERTOS 🍷

Come learn the meaning of Día de los Muertos and join us for a mini altar workshop. Participate in the historical tradition of celebrating our loved ones who have passed by creating altars.

### DINNER & A SHOW 🍷

Join us for the Music Theater of Idaho production of Sweeney Todd at the Nampa Civic Center. We will stop for dinner on the way to the show. Cost of dinner is on your own.

### EMMETT FRUIT FARM 🍷🍷🍷

Another great Treasure Valley small town, we will visit a fruit farm in Emmett for some fruit picking, then go into town for some window shopping. All purchases are on your own.

### ESCAPE ROOM 🍷🍷

An escape room is an immersive and interactive real-life adventure where you and your team discover clues to escape within the time limit. Join us for a fun new adventure!

### FARM TO FUN 🍷🍷

Check out the final week of the Farmer's Market in Caldwell. Live music, food, produce, crafts and a fun time with friends. All purchases are on your own.

### HARVEST FESTIVAL 🍷🍷🍷

Let's go to Middleton! We will check out the Middleton Harvest Festival: car show, craft vendors, food trucks, live music and more.

### HIDDEN GEM MARKET 🍷🍷

Imagine a market, yard sale, flea market and a crafters market all in one place! We will check out the Hidden Gem Market then stop for lunch. Cost of lunch is on your own.

### IDAHO CITY HOT SPRINGS 🍷🍷

Drive up Highway 21 to Idaho City, the first capitol of Idaho. We will enjoy lunch in Idaho City then soak at The Springs. Cost covers transportation and hot springs fees. Lunch cost and snacks at the hot springs are on your own.



Farm to Fun

## LIFETIME AND LEISURE

### BONUS PROGRAMS

In Boise, many fun events are not advertised until just before they happen. Sometimes interest grows for a specific activity after the schedule has been printed. The BONUS programs will be one or more additional program announced each month where we will provide transportation and assistance. To find out about monthly bonus programs, be sure you are on our email list. If you prefer a phone call instead of email, just let us know! Please contact us at [seniorcenter@cityofboise.org](mailto:seniorcenter@cityofboise.org) or 208-608-7580.



# LIFETIME AND LEISURE (62+)

## MODEL RAILROAD MUSEUM



We will visit the Old Boise Model Railroad Club in Downtown Boise. This group is in the basement of the old Pioneer building. Please be advised there are stairs to navigate to access this area.

## SENIOR LIFESTYLE EXPO



Transportation to the Senior Lifestyle Expo at Expo Idaho, then lunch to discuss all we have learned! The Expo is the Treasure Valley's premier health, activity and planning expo for seniors living in Idaho. Cost of lunch is on your own.

## SCENTSY LIGHTS & DINNER



Every year Scentsy decorates the grounds, known as "The Commons" with over 100,000 lights, providing a spectacular display for the public to enjoy. We will have a dinner at Louie's Pizza & Italian Restaurant in Meridian then head out to see the lights. Dinner is included.



Wine Tasting

## WINE TASTING – Dude DeWalt Cellars



Located in the rugged Eagle foothills, this new winery strives to preserve the memory and legend of this incredible area. Enjoy the views, taste the wine, enjoy friendships and a relaxing afternoon. Cost of food and wine tasting is on your own.



**REGISTER FOR CLASSES STARTING AT 7AM:**  
[cityofboise.org/parks](http://cityofboise.org/parks)

**AUGUST 14** (Residents)  
**AUGUST 16** (Non-residents)

DATE	OUTING 62+	DAY	TIME	LOCATION	FEE RES/NR	ACTIVITY#
Aug 29	CEMETERY TOUR	Tu	10-11:30AM	Dick Eardley SC	FREE	104067-01
Sept 8	ART IN THE PARK	F	1-5PM	Dick Eardley SC	\$15/\$22.70	103073-01
Sept 14	BEE FARM TOUR	Th	12:15-4PM	Dick Eardley SC	\$20/\$30.45	103036-01
Sept 16	HARVEST FESTIVAL	Sa	10AM-3PM	Dick Eardley SC	\$15/\$22.70	103277-01
Sept 19	EMMETT FRUIT FARM	Tu	12:30-4:30PM	DESC/MNCC	\$16/\$24.25	104400-01
Sept 22	WINE TASTING – Dude DeWalt Cellars	F	2-5:30PM	Dick Eardley SC	\$24/\$36.65	104132-01
Sept 26	FARM TO FUN	Tu	5-9:30PM	DESC/WCC	\$20/\$30.45	104066-01
Sept 29	BOP – BIRDS OF PREY FLIGHT SHOW	F	9:45AM-1:30PM	Dick Eardley SC	\$27/\$41.30	104097-01
Oct 7	SENIOR LIFESTYLE EXPO	Sa	10AM-2PM	Dick Eardley SC	\$15/\$22.70	103019-01
Oct 12	IDAHO CITY HOT SPRINGS	Th	11AM-5PM	Dick Eardley SC	\$49/\$75.40	104050-01
Oct 14	HIDDEN GEM MARKET	Sa	10AM-1:30PM	Dick Eardley SC	\$15/\$22.70	104161-01
Oct 17	CRAFT & LUNCH	Tu	12:15-4:30PM	DESC/MNCC	\$45/\$69.20	104035-01
Oct 19	DINNER & A SHOW	Th	4:30-10:30PM	Dick Eardley SC	\$55/\$84.70	104128-01
Oct 24	BASQUE BLOCK TOUR	Tu	12:30-4PM	Dick Eardley SC	\$20/\$30.45	104111-01
Oct 26	BOISE LITTLE THEATER	Th	4:45-9PM	Dick Eardley SC	\$29/\$44.40	105012-01
Oct 28	DIA DE LOS MUERTOS	Sa	10:30AM-1PM	Dick Eardley SC	\$15/\$22.70	104104-01
Oct 29	COFFEE TASTING	Su	9:45AM-12PM	Dick Eardley SC	\$31/\$47.50	104098-01
Nov 2	MODEL RAILROAD MUSEUM	Th	1:15-3:30PM	Dick Eardley SC	\$18/\$27.35	104246-01
Nov 7	ESCAPE ROOM	Tu	1:30-5:30PM	Dick Eardley SC	\$50/\$76.95	104055-01
Nov 30	IDAHO CITY HOT SPRINGS	Th	11AM-5PM	Dick Eardley SC	\$49/\$75.40	104050-02
Dec 12	SCENTSY LIGHTS & DINNER	Tu	4:30-8:30PM	Dick Eardley SC	\$35/\$53.70	103005-01

\*The bus leaves from the second location 15 minutes later than the printed time. You will be given an option of pickup location at the time of registration. See key for location names and addresses.



# SENIOR HEALTH + SAFETY FAIR

OCTOBER 17 | 10:30AM-12PM

- Enjoy health and safety-related demonstrations and activities.
- Meet local service providers.
- Sample healthy snacks.
- Take home fun giveaways.
- Clinics include enhanced flu shots, blood pressure checks and hearing tests.

**Dick Eardley Senior Center**  
690 Robbins Road, Boise | 208-608-7580



## MY GATEWAY TO BUCKET LIST TRAVEL

An easy launch pad  
for your travel wish list.



## TRAVEL WITH US

### INFORMATIONAL MEETING

Dick Eardley Senior Center | Sept. 12 | 10-11 a.m.

Collette Travel will present travel information for trips scheduled in 2024. Seating is limited.

**Alaska Discovery  
Land & Cruise**  
July 31 -  
August 11, 2024

**Discover the  
Colors of New  
England**  
Oct. 4-11, 2024

**Southern Charm  
Holiday**  
December 2024



Call 208-608-7580 to save your spot.  
TTY: 1-800-377-3529

## Dick Eardley Senior Center

# PUNCH CARDS



Purchase punch cards at the Senior Center, leave them at the Senior Center.

We'll keep track of your balance and let you know when it's time to renew.

Punch cards are good for \$20 worth of drop-in programs at the Senior Center and can be used in conjunction with scholarships.

Stop by or call 208-608-7580 for details.

# DICK EARDLEY SENIOR CENTER DROP-IN PROGRAMS (62+)



## ABOUT

### Dick Eardley Senior Center

#### ABOUT

The Dick Eardley Senior Center is a meeting place where older adults can participate in a variety of programs, classes, activities and services focused on health, life-long learning, recreation and more. It is a lively place that connects older adults to the community, where they can take classes, share a meal, engage in games and activities, and socialize. We offer a welcome orientation and facility tour on the second Wednesday of each month beginning at 11AM. Join us!

#### FINANCIAL ASSISTANCE

Boise Parks and Recreation offers financial scholarships to qualified adults age 62 and older. Scholarships can help pay for classes and activities. To find out if you qualify, apply in advance at the Dick Eardley Senior Center or Fort Boise Community Center.

#### ON-SITE SHOPPING

The center features a craft boutique offering one-of-a-kind items that are made locally by people age 50 and older. There is also a community thrift store on site where donations of new and slightly used items are always welcome. Proceeds from the thrift store help provide programs and services for seniors. Both stores are open 10AM-2PM Monday-Friday.

#### DONATIONS

We rely on monetary donations so that we can offer unique and creative programming and scholarships to older adults who have financial difficulties. Please send tax-deductible donations to the Dick Eardley Senior Center, c/o Boise Parks and Recreation, 690 Robbins Road, Boise, ID 83702. Thrift store donations are also accepted at the same location during regular business hours.

#### DICK EARDLEY SENIOR CENTER

ADDRESS: 690 Robbins Road

PHONE: 208-608-7580

EMAIL: [seniorcenter@cityofboise.org](mailto:seniorcenter@cityofboise.org)

WEB: [cityofboise.org/senior-center](http://cityofboise.org/senior-center)

HOURS: Monday-Friday from 9AM-5PM.

LUNCH: Lunch is prepared on site by Metro Boise Meals on Wheels and served weekdays from 12-12:30PM. For Meals on Wheels information, call 208-321-0031.

#### HOLIDAY CLOSURES:

Labor Day, September 4

Veterans Day, November 10  
(lunch served curbside)

Thanksgiving, November 23 & 24

Christmas, December 25

New Year's Day, January 1

## CARDS & GAMES

### BRIDGE

Monday & Thursday 1-5PM, \$2 per visit.

### CANASTA

Wednesday 1-5PM, \$2 per visit.

### CRIBBAGE

Wednesday 10AM-12PM, \$2 per visit.

### EUCHRE

Tuesday 1-5PM, \$2 per visit.

### MAHJONG

Tuesday 1-5PM, \$2 per visit.

### MEXICAN TRAIN

Monday 1-5PM, \$2 per visit.

### INTRO TO PINOCHLE

Friday 2-5PM, \$2 per visit.

### PINOCHLE

Friday 10AM-2PM, \$2 per visit.

### RUMMIKUB

Thursday 1-5PM, \$2 per visit.

## FITNESS

### FIT AND FALL PROOF

Tuesday & Friday 1-2PM, FREE. Offered through a partnership with Central District Health.

### LONGEVITY STICK

Tuesday 10:30-11:30AM, \$2 per visit. Longevity stick incorporates movements designed to improve balance, flexibility, strength and mental focus.

## SOCIAL

### ACRYLICS SOCIAL GROUP

Wednesday 1-3PM, \$2 per visit or \$5 includes materials.

### ARTS & CRAFTS SOCIAL GROUP

Tuesday 2-4PM, \$2 per visit. Call the front desk for information.

### BILLIARDS

Monday-Friday 9AM-5PM, \$2 per visit.

### BINGO

Thursday 10-11AM, FREE.

### BOOK CLUB

Monthly, FREE. Call the front desk for information.





Tour Tuesdays at  
**THE WATERSHED**

**FREE TOURS** of the Water Renewal Facility  
the second Tuesday of each month.  
Ages 5+



Register online  
[boisewatershed.org](http://boisewatershed.org)



**INBODY**  
BODY COMPOSITION SCAN

**Transform your fitness journey this October!**

Uncover your body's true composition with our quick and non-invasive InBody scan. Discover muscle/skeletal mass, fat, and water percentages in under 5 minutes.

Free for Fort Boise Community Center pass holders; \$25 for non-pass holders.

Turn to page 38 for details.

DAYS	TIME	DATES	FEE
M	9 AM - 1 PM	Oct 2	\$25
W	8 AM - 12 PM	Oct 18	\$25
Th	8 AM - 12 PM	Nov 2	\$25
W	8 AM - 12 PM	Nov 15	\$25
Tu	8 AM - 10 AM	Dec 12	\$25



**VOLUNTEER WITH US**



We are always looking for individuals or groups!

[cityofboise.org/volunteer](http://cityofboise.org/volunteer)



# DICK EARDLEY SENIOR CENTER DROP-IN PROGRAMS (62+)

## SOCIAL CON'T

### CHAT-N-CHEW SOCIAL GROUP

Thursday 10-11:30AM, \$2 per visit.

### DRUMMING DIVAS

Thursday 11:30AM-12:30PM, \$2 per visit.  
Drumming circle. Bring a drum or borrow one.

### KNITTING/CROCHETING

Wednesday 10AM-12PM, \$2 per visit.

### SENIOR ENTREPRENEURS

2nd and 4th Thursday 1-2:30PM, FREE. A support group aimed at bringing together aspiring older adults and professional advisors who can help guide efforts at entrepreneurship and small-business management. Call to sign up, 208-608-7580.

### TEDDY BEAR FACTORY SEWING

Wednesday 9-11:30AM, \$2 per visit.

## SERVICES

### ASK THE DOC

3rd Friday 2-3PM, FREE. Meet with Dr. Kara Kuntz from Saint Alphonsus for a monthly health-related Q&A. Call to reserve your spot, 208-608-7580.

### HOUSING 101

2nd Tuesday 11AM-12PM, FREE. Meet with Paige Doyle, a seniors real estate specialist for help and information.

### LEGAL COUNSEL

2nd and 4th Tuesday 11AM-1PM, FREE service provided by local attorneys. Call for appointment, 208-608-7580.

### WELCOME TOUR

2nd Wednesday 11AM, FREE. Come take a tour and learn about the programs available. Includes lunch for new visitors!

## TECHNOLOGY EDUCATION

### TECHNOLOGY LECTURES

Opportunities to enhance your technology skills are made possible through a partnership between LEARN Idaho and AARP's Senior Planet. Lectures are scheduled 10:30-11:45 a.m. Space is limited. Give us a call at 208-608-7580 to sign up.

SEPT. 11 – Intro to Managing Your Privacy

OCT. 9 – YouTube

OCT. 16 – Messaging Apps

OCT. 23 – Money Matters

OCT. 30 – Intro to Social Media

NOV. 6 – Mobile Health Apps

NOV. 13 – MyChart

NOV. 20 – Telemedicine

NOV. 27 – Online Shopping

DEC. 4 – Smartphones at a Glance

DEC. 11 – Tips for Being News Savvy Online

## TRAVEL

Boise Parks and Recreation has partnered with multiple travel companies to present senior-friendly tours to different parts of the U.S. and around the world! Brochures are available at the front desk.

### TRAVEL PRESENTATION, Tuesday, Sept. 12, 10AM

Call 208-608-7580 to RSVP. Join Collette Travel for a presentation about trips in 2024: Alaska Discovery (July 2024), Colors of New England (October 2024) and Southern Charm Holiday (December 2024). Are you on our email list? Be the first to know as new travel opportunities are added. Email [seniorcenter@cityofboise.org](mailto:seniorcenter@cityofboise.org).

## SPECIAL EVENTS

### AUTUMN JAMBOREE, Thursday, Sept. 21, 4-6PM

Join us for music, dancing, and light snacks. A no-host beer and wine bar will be available. Tickets are \$5 each. Advanced purchase required by Sept. 19 at 5PM.

### HALLOWEEN COSTUME CONTEST, Tuesday, Oct. 31, 12PM

Come dressed in your Halloween best and you just might win a prize. We'll rely on the applause-o-meter to pick this year's winners. Categories are Funniest, Spookiest, Best Couples/Group and Wow! Everyone is invited.

### VETERANS DAY CELEBRATION, Thursday, Nov. 9, 12PM

Veterans and their families are invited to join us for a lunchtime celebration. Staff will play the Armed Forces Medley on the piano, and veterans in attendance will be encouraged to stand while their military branch song is played. Veterans will also receive a commemorative lapel pin to wear for the day. Thank you for your service!

### 42nd ANNUAL HOLIDAY BAZAAR, Saturday, Nov. 18, 10AM-2PM

Deck the halls and get your Christmas shopping off to a solid start! We'll host dozens of crafters, artists, and distributors so you can find what

you need to decorate for the holidays and give the perfect gift to everyone on your list. Be sure to visit our thrift store and craft boutique while you're here. Lunch items, popcorn and beverages will be available to purchase.

### HAPPY HOLIDAY HOP, Thursday, Dec. 7, 4-6PM

Join us for music, dancing, and appetizers in a festive holiday setting. A no-host beer and wine bar will be available. Tickets are \$5 each. Advanced purchase required by Dec. 5 at 5PM.

## FOR YOUR HEALTH

### BLOOD PRESSURE CLINIC

2nd and 4th Thursdays 11-12:30PM, FREE.

### MEDITATION FOR HEALTH & WELLNESS

2nd Friday 11:15-11:45AM, FREE.

### PET THERAPY VISITS

Last Thursday of each month, 11AM-12PM Come and give good-dog pats to Taco and Patches.

### SENIOR HEALTH & SAFETY FAIR, Tuesday, Oct. 17, 10:30AM-12PM

If you're age 55 or better, this health fair is for you. Participate in health and safety demonstrations, meet local service providers, and enjoy giveaways and healthy snacks. Clinics include enhanced flu shots, blood pressure checks, hearing tests and more.

## ABOUT

### Drop-In Programs

We offer daily programs for older adults. Most classes have a small fee which can be paid at the start of each class. A punch card is available with \$20 worth of classes. Those with a punch card do not need to bring money each day; instead, they can just use their card which can be stored at the front desk.

### Educational Opportunities

The Dick Eardley Senior Center offers a variety of educational opportunities to challenge the mind, learn a new skill, or engage with like-minded individuals. Sign up for the monthly newsletter or call the front desk for current information, 208-608-7580.

## JOIN US FOR LUNCH



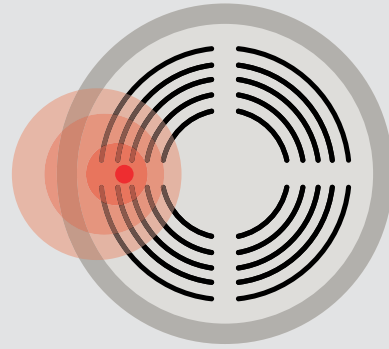
### MEALS ON WHEELS METRO BOISE

is proud to partner with the Dick Eardley Senior Center.

- Lunch served weekdays: 12:00-12:30 p.m.
- \$4 for ages 60+ (suggested donation)
- \$6 under age 60

**(208) 321-0030**

[MetroMealsOnWheels.net](http://MetroMealsOnWheels.net)



## SMOKE ALARMS SAVE LIVES

Working smoke detectors save lives.  
Install one in every bedroom and  
check batteries twice a year.

Know someone in need of a smoke detector?

Call (208) 570-6500.



## DOWNLOAD IDA – AN IDAHO LIBRARY APP

Access your Boise Public Library  
account on-the-go!

Search the catalog | Place holds

Manage your account

Request curbside pickup

Check out books from your phone

App available for iOS  
and Android devices.



Ida is available for all  
library cardholders of the  
Boise Public Library.



## SCHOLARSHIPS AVAILABLE



Boise Parks and Recreation offers scholarships  
based on income. Scholarships available for  
youth, adults with disabilities and for individuals  
62 years and older.

If you would like scholarship  
assistance, please apply in  
advance by visiting  
[cityofboise.org/scholarships](http://cityofboise.org/scholarships)







## ADAPTIVE RECREATION

THIS PROGRAM IS DESIGNED FOR INDIVIDUALS WITH DISABILITIES, HOWEVER, EVERYONE IS WELCOME.



### PROGRAMS & SERVICES

Boise Parks and Recreation's AdVenture Program provides a wide range of programs for youth and adults with disabilities. We also offer inclusion services in which modifications may be provided so that an individual with a disability can fully participate in Boise Parks and Recreation's programs. Services such as sign language interpreters, additional staff, adaptive equipment, etc. may be provided with a minimum of three or more weeks advanced notice of the program start date with no cost to the participant. To inquire about inclusion services, please contact Emily Kovarik at 208-608-7687 (TTY: 1-800-377-3529) or [ekovarik@cityofboise.org](mailto:ekovarik@cityofboise.org). Reasonable modifications are based on individuals' needs and abilities.

### PARTICIPANT PERSONAL NEEDS

The adaptive recreation staff and volunteers provide leadership for the program but are unable to provide assistance with self-care needs (feeding, toileting assistance, etc.). Care providers should accompany participants who need personal care. Participants who have behavioral issues may be asked to participate with an aide in attendance. Please let us know upon registration if you will be bringing your own aide as fees for aides may be waived or may vary depending on the activity. Participants should enjoy meeting new people, be able to function in a group setting and need to be able to adjust to new routines and environments. Please call 208-608-7680 to learn more.

### AGES

Many of our programs welcome people under the specified age range. However, an adult may need to sign up with them. Please call 208-608-7680 to learn more.

### FINANCIAL ASSISTANCE

Boise Parks and Recreation offers financial scholarships to qualified youth, seniors and adults with disabilities. To find out if you qualify to receive a scholarship, which will help pay for a class or activity, apply in advance at Fort Boise Community Center or [cityofboise.org/scholarships](http://cityofboise.org/scholarships).

### DONATIONS WELCOME

We rely on donations so that we can offer scholarships to adults with disabilities who have financial difficulties. Please send tax-deductible donations to the AdVenture Heritage Fund, Boise Parks and Recreation, 700 Robbins Road, Boise, Idaho 83702. Thank you, your support is greatly appreciated!

### VOLUNTEER ★

If you are age 18 and older, the AdVenture program could use your help! Please consider volunteering, it is a great way to give back to the community and someone who needs a hand. Please contact Sonya Buchholz at 208-608-7681 or by e-mail at [sbuchholz@cityofboise.org](mailto:sbuchholz@cityofboise.org) to learn more about upcoming volunteer opportunities.



### ADAPTIVE RECREATION

## Customized Activities for Groups

AdVenture offers a variety of adaptive recreation opportunities for groups, including art, dance, outdoor adventures and more. We use the expertise and resources of the AdVenture program to customize recreation programs to meet your group's specific needs and goals. Please contact 208-608-7687 for more information.

# CLASSES & CLUBS

## ADAPTIVE ART

**AGES 15+** Participants with disabilities will explore several forms of art ranging from pottery, drawing, painting and more.

## ADAPTIVE COOKING CLASS

**AGES 15+** Help prepare meals that we will eat together as a group. We will improve our cooking skills, socialize with friends and take part in clean-up duties. We are unfortunately unable to accommodate special diets. Please call 208-608-7681 with any questions.

## ADAPTIVE YOGA

**AGES 15+** Designed for individuals who have disabilities, our instructor is great at adapting yoga poses for people of all abilities.

## ADVENTURE WALKING CLUB

**AGES 15+** Designed for individuals with disabilities who enjoy a leisurely walks in the park and can stay with the group. Meets rain or shine.

## BOWLING CLUB

**AGES 16+** A fun, noncompetitive bowling group offering socialization opportunities for

individuals with disabilities. This activity meets at the Bowling Alley in the BSU Student Union Building.

## DANCE ABILITY

**AGES 12+** Explore various styles of dancing, rhythm and music. Students will learn to increase their strength, flexibility and coordination through dance.

## FITNESS CLASS

**AGES 15+** Work on stretching, band workouts and aerobic activity. Classes are structured for different levels of ability. The 4PM class will focus on more advanced techniques and students will need to follow two-step directions.

## ICE SKATING – Adaptive

**5+** Students will receive instruction based upon their individual needs and goals. Some adaptive equipment is available for use at no extra cost. Enrollment based on instructor availability.

## ICE SKATING – Jingle Blade Ice Show Cast (Adaptive)

**AGES 5+** Find more information on page 18.



Adaptive Art

## MUSIC CLASS

**AGES 12+** Students will have the opportunity to play a variety of percussion instruments, drums, sing and more. No music experience is needed.

CLASS	AGE	DAY	TIME	DATE	LOCATION	FEE	ACTIVITY#
ADAPTIVE ART	15+	M	4:15-5:15PM	Sept 18-Oct 23	Fort Boise CC	\$43.75	100539-01
		Tu	5-6PM	Sept 19-Oct 24			100539-02
		Sa	10-11AM	Sept 23-Oct 28			100539-03
		M	4:15-5:15PM	Oct 30-Dec 11*			100539-04
		Tu	5-6PM	Oct 31-Dec 12*			100539-05
		Sa	10-11AM	Nov 4-Dec 16*			100539-06
ADAPTIVE COOKING CLASS	15+	Th	5:30-7:30PM	Sept 21-Oct 26 Nov 2-Dec 14*	Fort Boise CC	\$79	100729-01 100729-02
ADAPTIVE YOGA	15+	M	5:30-6:30PM	Sept 18-Oct 23 Oct 30-Dec 11*	Fort Boise CC	\$43	100753-01 100753-02
ADVENTURE WALKING CLUB	15+	M	5:30-7:30PM	Sept 11-Oct 16	Fort Boise CC	\$49	100800-01
BOWLING CLUB	16+	M	7-8:30PM	Sept 5-Oct 24	BSU SUB	\$65	100730-01
				Oct 31-Dec 12*		\$49	100730-02
DANCE ABILITY	12+	W	3-4PM	Sept 20-Oct 25	Fort Boise CC	\$31	100538-01
			4-5PM	Sept 20-Oct 25			100538-02
			3-4PM	Nov 1-Dec 13*			100538-03
			4-5PM	Nov 1-Dec 13*			100538-04
FITNESS CLASS	15+	Tu, Th	3-4PM	Sept 19-Oct 26	Fort Boise CC	\$49	100728-01
			4-5PM	Sept 19-Oct 26			100728-02
			3-4PM	Oct 31-Dec 14*			100728-03
			4-5PM	Oct 31-Dec 14*			100728-04
ICE SKATING – Adaptive	5+	Varies	Varies	Sept/Oct Session Nov/Dec Session	Idaho IceWorld	Varies	Call 208-608-7718
ICE SKATING – Jingle Blades Ice Show Cast (Adaptive)	5+	M	7:15-7:45PM	TBD – Dec 4	Idaho IceWorld	\$116	161110**
MUSIC CLASS	12+	Th	4:30-5:30PM	Sept 21-Oct 26	Dick Eardley SC	\$31	100764-01
			5:45-6:45PM	Sept 21-Oct 26			100764-02
			4:30-5:30PM	Nov 2-Dec 14*			100764-03
			5:45-6:45PM	Nov 2-Dec 14*			100764-04

\*No class Nov 20-25 \*\*Registration Deadline Sept 12

## CLASSES & CLUBS CON'T

### SOCIAL CLUBS

**AGES 18+** These clubs are ideal social opportunities for adults with disabilities. Activities may include sporting events, movies, and bowling. Members of the club will need to bring \$4-\$7 for each day to cover activity costs. A detailed schedule will be available.

CLASS	AGE	DAY	TIME	DATE	LOCATION	FEE	ACTIVITY#
SOCIAL CLUB – Tuesday	18+	Tu	6-8:30PM	Sept 5-Oct 17	Dick Eardley SC	\$85	100330-01
				Oct 24-Dec 12*	SC		100330-02
SOCIAL CLUB – Wednesday		W		Sept 6-Oct 18	Morley Nelson CC		100320-01
				Oct 25-Dec 13*			100320-02
SOCIAL CLUB – Thursday		Th		Sept 7-Oct 19	Whitney CC		100300-01
				Oct 26-Dec 14*			100300-02
SOCIAL CLUB – Friday	18-32	F	6:30-9PM	Sept 8-Oct 20	Dick Eardley SC	100310-01	
				Oct 27-Dec 15*		100310-02	

\*No class Nov 20-25

## ONE-DAY ACTIVITIES

### ADAPTIVE BIKE FITTING

**AGES 16+** Not sure what adaptive cycle will work for you during an AdVenture bike ride? Schedule an adaptive bike fitting with one of our Adaptive Recreation staff. During this 30-45 minute session, we'll show you a variety of the adaptive cycles that are part of our fleet. Please note, we do not sell bikes, this is for educational purposes only. Bike fittings cost \$5 per person and must be scheduled in advance by calling 208-608-7681.

### ADAPTIVE BIKE RIDE

**AGES 16+** Join us for an hour-long adaptive bike ride along the beautiful Boise Greenbelt. Bring your own bike or use one of our adaptive hand cycles, adult tricycles, recumbent tricycles, or tandem bikes or trikes (call 208-608-7680 for bike availability and reservations). These rides are designed as supervised group rides and are not bike riding lessons; however, proper trail manners and safety will be addressed. Participants must be able to follow directions and stay with the group or attend with someone who can assist. \*Youth under 16 are welcome but must attend with an adult.

### ADAPTIVE BIKE RIDE & PICNIC

**AGES 16+** This program is very similar to the Adaptive Bike Ride (please see previous description), however, at this activity we will have lunch after the hour-long ride. Bring your own bike or use one of AdVenture's adaptive cycles (call 208-608-7680 for bike availability and reservations). Participants must be able to follow directions and stay with the group or attend with someone who can assist.

### BIRDS OF PREY TRIP

**AGES 16+** Learn about the local birds of prey and if the weather allows, watch the flight show at the World Center for Birds of Prey. Before checking out the birds we will socialize over lunch.

### CERAMICA & LUNCH

**AGES 16+** During this fun activity, we will get creative painting a piece of pottery at Ceramica and then go out to lunch.

### CORN MAZE ADVENTURE

**AGES 16+** Navigate your way through an elaborate maze cut through a local corn field. Before taking a journey through the corn maze we will go out to eat. Participants must be able to stay with the group or attend with someone to assist who also enrolls.

### DANCING & PIZZA

**AGES 18+** Join AdVenture at two separate Arc, Inc. dances. In October, dress up in your best costume for the Halloween Dance and in December, celebrate the holiday season at the Holiday Ball. Before the dance we will socialize over a pizza dinner.

### DINE & DECORATE

**AGES 16+** Get creative with AdVenture! We will socialize over a meal and then create seasonally themed arts and crafts projects.

### DINNER & A MOVIE

**AGES 18+** Enjoy dinner and a movie during these fun Friday evenings! We will go out to dinner and then watch a movie (rated G-PG13) at a local movie theater.

### DISCOVERY CENTER & LUNCH

**AGES 16+** Have fun learning about science at the Discovery Center of Idaho. After exploring the cool, hands-on activities, we will go out to lunch.

### FOOTHILLS HIKE & DINNER

**AGES 16+** Socialize over dinner and then go on a relaxed hike in the beautiful Boise Foothills.

### GAME NIGHT & DINNER

**AGES 16+** It's game night with AdVenture! We will play board games, BINGO, shuffleboard and more. We will also eat pizza and make ice cream sundaes.



Corn Maze Adventure

### GAMES & DINNER AT THE PARK

**AGES 16+** Try out the fun and relaxed sport of Bocce, Disc Golf and more at the park! We will also eat takeout dinner in the park.

### HALLOWEEN PARTY

**AGES 16+** Celebrate Halloween by having a pizza dinner, tie-dyeing and carving a pumpkin. Fee includes an item for tie-dyeing, pizza dinner and a pumpkin for carving. Participants are welcome to dress up!

### HOLIDAY CRAFTS & PIZZA

**AGES 16+** Get creative this winter with AdVenture! We will decorate cookies, create holiday crafts and cards that you get to take home, and socialize over a pizza lunch.

### HOLIDAY LIGHTS & DINNER

**AGES 16+** Join us for dinner and a trip to the beautiful Winter Garden aGlow at the Idaho Botanical Garden. This dazzling, festive display has almost 250,000 lights arranged throughout the garden and is sure to amaze you!



# ONE-DAY ACTIVITIES CON'T

## HOLIDAY PARTY

**ALL AGES** Celebrate the season with AdVenture at the annual Holiday Party. We will celebrate the holidays by offering entertainment featuring games, crafts, music and activities for everyone. This party is fun for the whole family and there will be great prizes, as well as dinner. We think Santa will even show up to spread holiday cheer! Advanced registration is required.

## HOT SPRINGS TRIP

**AGES 18+** Soak at a beautiful Idaho hot spring resort with AdVenture. This fun outing also includes a late lunch in Idaho City. The cost includes transportation from Fort Boise Community Center, lunch and the hot springs entrance fee. The hot spring is accessible and has a lift, however, there is no lifeguard on duty so participants should know their swimming limits.

## IDAHO STATE MUSEUM & LUNCH

**AGES 16+** Explore the history of our great state at the Idaho State Museum and then go out to lunch.



**SCHOLARSHIPS AVAILABLE:**  
[cityofboise.org/scholarships](http://cityofboise.org/scholarships)

CLASS	AGE	DAY	TIME	DATE	LOCATION	FEE	ACTIVITY#
ADAPTIVE BIKE RIDE	16+	W	5:30-7PM	Sept 6	Kristin Armstrong Municipal Park	\$8	100737-01
				Sept 13			100737-02
				Sept 20			100737-03
				Sept 27			100737-04
			5-6:30PM	Oct 11			100737-05
				Oct 18			100737-06
ADAPTIVE BIKE RIDE & PICNIC	16+	Sa	9:30AM-12PM	Sept 16 Oct 14	Kristin Armstrong Municipal Park	\$18	100738-01 100738-02
BIRDS OF PREY TRIP	16+	F	11:45AM-5:15PM	Oct 13	Fort Boise CC	\$34.50	100530-01
CERAMICA & LUNCH	16+	Sa	10AM-1PM	Sept 9	Fort Boise CC	\$34.50	100744-01
				Dec 2			100744-02
CORN MAZE ADVENTURE	16+	Sa	11AM-3PM	Oct 7	Fort Boise CC	\$38	100515-01
		F	5:30-9:30PM	Oct 13			100515-02
DANCING & PIZZA	18+	F	5:30-9:30PM	Oct 27	Dick Eardley SC	\$22	100710-01
				Dec 15			100710-02
DINE & DECORATE – Halloween Decor	16+	W	5:30-8PM	Oct 4	Dick Eardley SC	\$34.50	100545-01
DINE & DECORATE – Harvest Decor				Nov 8			100545-02
DINE & DECORATE – Winter Painting		M	5:30-8PM	Dec 11			100545-03
DINE & DECORATE – Gingerbread Houses				Dec 18			100545-04
DINNER & A MOVIE – Qdoba*	18+	F	5-9:30PM	Sept 8	Fort Boise CC	\$31	100203-01
DINNER & A MOVIE – Mongolian BBQ*				Sept 22			100203-02
DINNER & A MOVIE – Idaho Pizza Co.*				Oct 6			100203-03
DINNER & A MOVIE – Big Jud's*				Oct 20			100203-04
DINNER & A MOVIE – Eddie's Restaurant*				Nov 17			100203-05
DINNER & A MOVIE – Chapala Mexican*				Dec 8			100203-06
DISCOVERY CENTER & LUNCH	16+	F	10AM-1:30PM	Oct 27	Fort Boise CC	\$35	100560-01
FOOTHILLS HIKE & DINNER	16+	Th	5:30-8PM	Sept 14	Dick Eardley SC	\$25	100620-01
GAME NIGHT & DINNER	16+	Sa	5-7:30PM	Nov 18	Dick Eardley SC	\$22	100510-01
GAMES & DINNER AT THE PARK	16+	Sa	5-7:30PM	Sept 23	Kristin Armstrong Municipal Park	\$26.50	100716-01
HALLOWEEN PARTY	16+	Sa	5-7:30PM	Oct 28	Dick Eardley SC	\$31	100522-01
HOLIDAY CRAFTS & PIZZA	16+	Sa	10AM-12:30PM	Dec 9	Dick Eardley SC	\$28	100745-01
HOLIDAY LIGHTS & DINNER	16+	W	5:30-8:30PM	Dec 6	Fort Boise CC	\$30	100535-01
				Dec 13			100535-02
HOLIDAY PARTY	All**	F	6-9PM	Dec 1	Dick Eardley SC	\$7	100526-01
HOT SPRINGS TRIP	18+	Sa	9AM-3:30PM	Nov 4	Fort Boise CC	\$54	100713-01
IDAHO STATE MUSEUM & LUNCH	16+	F	10AM-1PM	Sept 22	Fort Boise CC	\$35	100742-01

\* Restaurant location could change due to availability. \*\*Youth under age 18 are welcome but must attend with an adult who also enrolls.

# ONE-DAY ACTIVITIES



Pumpkin Carving & Lunch

### MINI GOLF & MEAL

**AGES 16+** Join us for a social day playing mini golf and going out to eat.

### MUSIC NIGHT & DINNER

**AGES 18+** We have a super fun music night planned! We will make our own instruments, play drums and other percussion instruments, sing along to music videos and socialize over takeout dinner.

### OLD PENITENTIARY TOUR & LUNCH

**AGES 18+** Join us for lunch and then go on a tour of the historic and fascinating Old Idaho Penitentiary.

### PLANETARIUM & LUNCH

**AGES 16+\*** Check out the College of Idaho's planetarium in Caldwell and go out to lunch on this fun adventure.

### POTTERY, LUNCH & ZOO TRIP

**AGES 16+** Create a unique pottery piece, go out to lunch and then take a trip to the zoo. Participants must be able to stay with the group.

### PUMPKIN CARVING & LUNCH

**AGES 16+** Join us for a fall pumpkin day! We will pick out the perfect pumpkin, go out to lunch and then get creative carving our pumpkins.

### NEW! TALENT SHOW & PIZZA

**AGES 18+** Share your special talent with AdVenture! We will eat a pizza dinner and then everyone will have the opportunity to share their talent with the group (you do not have to preform to join us). Talents could be singing, dancing, telling jokes and so much more.

### THEATER & LUNCH

**AGES 18+** Let's see a play at Boise Little Theater! Before going to the theater, we will socialize over a meal. Participants must have the ability to sit quietly through a two-hour play. In September we will see "Sherwood: The Adventures of Robin Hood" and we will see "A Christmas Carol" in December. Before enrolling, please view play descriptions at [boiselittletheater.org](http://boiselittletheater.org) to make sure the play is a good fit for you.

### THREE ISLAND CROSSING TRIP

**AGES 16+** Visit the beautiful Three Island Crossing State Park and learn about the history of the area and the Oregon Trail. Tour the History Center, eat a picnic lunch, play disc golf and check out the birds. Please be ready for an active day of exploring.

### NEW TRIVIA NIGHT & PIZZA

**AGES 18+** Socialize over a pizza dinner and then play trivia!

### NEW ZOO BOISE ADAPTIVE EVENING & DINNER

**AGES 16+** AdVenture is taking a group to the "Adaptive Evening at the Zoo" which is a special event that includes a tour, up-close animal encounters and more. We will socialize over dinner before going to the zoo. This activity will be held mostly outdoors and participants must be able to stay with the group.

### ZOO & DINNER

**AGES 16+** Check out the cool animals at Zoo Boise! After our trip to the zoo, we will socialize over dinner in the park. Participants must be able to stay with the group.

CLASS	AGE	DAY	TIME	DATE	LOCATION	FEE	ACTIVITY#
MINI GOLF & MEAL	16+	F	5:30-9PM	Sept 15	Fort Boise CC	\$30	100720-01
		Sa	12:30-4PM	Oct 14			100720-02
MUSIC NIGHT & DINNER	18+	Tu	5:30-8PM	Sept 12	Dick Eardley SC	\$34.50	100546-01
OLD PENITENTIARY TOUR & LUNCH	18+	F	11AM-2:30PM	Sept 8	Fort Boise CC	\$30	100575-01
PLANETARIUM & LUNCH	16+*	F	9AM-2PM	Nov 17	Fort Boise CC	\$30	100302-01
POTTERY, LUNCH & ZOO TRIP	16+	F	9AM-3PM	Oct 20	Fort Boise CC	\$34	100561-01
PUMPKIN CARVING & LUNCH	16+	Sa	10AM-2:30PM	Oct 21	Dick Eardley SC	\$35	100525-01
TALENT SHOW & PIZZA	18+	F	5:30-8PM	Nov 3	Dick Eardley SC	\$25	100524-01
THEATER & LUNCH	18+	Sa	12:30-4:30PM	Sept 16	Fort Boise CC	\$42.50	100303-01
				Dec 16			100303-02
THREE ISLAND CROSSING TRIP	16+	Sa	9AM-4PM	Sep 30	Fort Boise CC	\$32	100750-01
TRIVIA NIGHT & PIZZA	18+	F	5:30-8PM	Nov 10	Dick Eardley SC	\$22	100534-01
ZOO BOISE ADAPTIVE EVENING & DINNER	16+	Th	5-8:30PM	Oct 12	Fort Boise CC	\$32	100559-01
ZOO & DINNER	16+	F	3-6PM	Sept 29	Zoo Boise	\$30	100757-01

## ADVENTURE SEEKER PROGRAM

INDIVIDUALS WITH PHYSICAL DISABILITIES ARE WELCOME TO SIGN UP FOR ANY PROGRAMS MENTIONED IN THIS ACTIVITY GUIDE. HOWEVER, THE FOLLOWING 'ADVENTURE SEEKER' PROGRAMS ARE DESIGNED SPECIFICALLY FOR PEOPLE WITH PHYSICAL DISABILITIES AND THEIR FRIENDS/FAMILY.



Wheelchair Rugby

### ADAPTIVE CYCLING

AdVenture offers many adaptive bike rides and participants can use one of our adaptive cycles (handcycles, recumbent trikes, tandems etc.) or bring their own. Please see page 56 for dates or call 208-608-7680 to learn more.

### ADAPTIVE SPORTS DAY

**ALL AGES** Try wheelchair tennis, wheelchair basketball and wheelchair rugby all in one day! Sports wheelchairs are provided or bring your own. This is an all-ages event, however, youth under 18 must attend with an adult. This event is free but advance registration is required. Snacks will be provided.

### WHEELCHAIR BASKETBALL – Skills & Drills

**AGES 6+** Learn how to play wheelchair basketball. Beginners and experts of all ages

are welcome at this wheelchair basketball skills development class. You do not have to have a disability to play. Basketball wheelchairs are provided. Please register for the session, drop-in is not available.

### WHEELCHAIR BASKETBALL

**AGES 18+\*\*** Come play pick-up wheelchair basketball. The first hour is designed for beginning and intermediate players and the second hour will be more competitive. You do not have to have a disability to play. Wheelchairs are provided. Drop-in fee is \$5 or enroll in the session.

### WHEELCHAIR RUGBY

**AGES 18+\*\*** This Paralympic Sport is a fast-paced and high-contact team sport that is a lot of fun! Typically played by people with physical disabilities, the wheelchair rugby team loves when people without disabilities

join as well. You will learn the rules, develop your skills and scrimmage during practice. Rugby wheelchairs are provided.

### WHEELCHAIR RUGBY FOOD & TOY DRIVES

**AGES 18+** The Boise Bombers Wheelchair Rugby Team and the AdVenture Program present the 10th annual Wheelchair Rugby Food and Toy Drives. The Bombers will play local sports teams, but adults are welcome to drop-in and play. Rugby wheelchairs are provided. On November 18, please bring canned food, boxed food or a turkey to play. On December 9, please bring unwrapped toys for Toys for Tots. Spectators of all ages are welcome, food or toy donations are appreciated. Call 208-608-7681 to learn more.

CLASS	AGE	DAY	TIME	DATE	LOCATION	FEE	ACTIVITY#
ADAPTIVE SPORTS DAY	All*	Sa	9AM-1:30PM	Sept 9	Fort Boise CC	FREE	100711-01
WHEELCHAIR BASKETBALL – Skills & Drills	6+	Sa	4:15-5:15PM	Sept 16-Oct 28	Fort Boise CC	\$23.75	100780-01
				Nov 4-Dec 16*		\$20.50	100780-02
WHEELCHAIR BASKETBALL	18+**	Sa	5:30-7:30PM	Sept 16-Oct 28	Fort Boise CC	\$23.75	100708-01
				Nov 4-Dec 16*		\$20.50	100708-02
WHEELCHAIR RUGBY	18+**	Sa	1:15-3:45PM	Sept 16-Oct 28	Fort Boise CC	\$30.75	100706-01
				Nov 4-Dec 16*		\$18	100706-02
WHEELCHAIR RUGBY FOOD & TOY DRIVES – Food Drive	18+	Sa	1:30-3:45PM	Nov 18	Fort Boise CC	FREE	100703-01
WHEELCHAIR RUGBY FOOD & TOY DRIVES – Toy Drive				Dec 9			100703-02

\*No Practice Nov 25 \*\*Teens under 18 may enroll if accompanied by an adult.





## VOLUNTEER (ALL AGES)

### VOLUNTEER



#### FIELD GUIDE To Boise's Birds

Birds are found in nearly every city setting, from urban micro parks to the sprawling foothills that border our northeastern edge. Birds visit backyard feeders, perch in low shrubs and on tall structures, swim in our river, lakes and ponds, nest in our trees and soar overhead. A variety of Boise's habitats attract and support hundreds of species, and we invite you to explore some of the area's most common birds.

The Field Guide to Boise's Birds is available for free online. Printed versions can be purchased at the Boise Parks and Recreation Administration Office for \$8 plus tax.

#### EDUCATION

##### Idaho Master Naturalists

Calling all nature nuts! The City of Trees Idaho Master Naturalist chapter is seeking participants for its 2024 class. The Idaho Master Naturalist program is an adult environmental education and volunteer program that engages participants in the stewardship of Idaho's natural world.

Participants certify as an Idaho Master Naturalist by completing 40 hours of education and 40 hours of volunteer service with the City of Trees chapter. Classes take place twice a month on Wednesday mornings, 9AM-12PM, from March-October. There is a \$100 participant fee. For more information, please contact Jerry Pugh, Community Volunteer Coordinator (208-608-7617, [jpugh@cityofboise.org](mailto:jpugh@cityofboise.org)).

#### VOLUNTEER OPPORTUNITIES

##### National Public Lands Day, September 23; 9AM-12PM

Join us on National Public Lands Day to help care for your local public lands. This year marks the 30th year of the national event sponsored by the National Environmental Education Foundation, during which hundreds of thousands of volunteers across the country will volunteer to help care for their public lands.

##### 2024 Tree Stewards, Thursday Mornings; 9-11AM

Do you have a love for trees or want to learn more about them? Boise Parks and Recreation

is currently seeking participants for its 2024 Tree Steward program. The program provides opportunities for residents to learn about and care for our community's trees through training and hands-on experience.

Volunteers will complete an orientation in late March/early April 2024, with trained and certified tree care professionals who teach how to identify trees, how trees grow, proper planting techniques, pruning basics and how to diagnose common tree problems. Participants will help care for park trees on Thursday mornings through October. Participants that complete 30 hours of service during the year become certified Tree Stewards.

##### Tree Wrapping, Tuesdays; 10AM-12PM

The Boise River riparian corridor provides critical habitat for a wide range of species including Bald eagles. Black cottonwoods and willows are critical components of this habitat and unfortunately are also a favorite food and construction resource for the American beaver.

#### CONTACT:

**Jerry Pugh**  
Community Programs Coordinator

**Boise Parks and Recreation**  
208-608-7617  
[jpugh@cityofboise.org](mailto:jpugh@cityofboise.org)

**VOLUNTEER OPPORTUNITIES**  
[cityofboise.org/caringforparks](http://cityofboise.org/caringforparks)

# VOLUNTEER

Beginning this fall/early winter, we need your help protecting trees from beaver damage by wrapping them with wire and replacing old wire. Volunteers may also assist with noxious and invasive species control, as well as other riparian stewardship projects. We will tackle a different section of the river corridor each week on Tuesdays, 10AM-2PM.

## Service Projects

Service projects can be scheduled throughout the season. These are typically one-time efforts that range from 3-4 hours, depending on location and group size. Common projects include park spruce-ups, tree mulching, amenity painting and repair, trash pick-up and tree wrapping.



Service Projects



**REGISTER FOR CLASSES  
STARTING AT 7AM :**  
[cityofboise.org/parks](http://cityofboise.org/parks)

**AUGUST 14** (Residents)  
**AUGUST 16** (Non-residents)

## VOLUNTEER & CONTRIBUTE TO WILDLIFE CONSERVATION

### Zoo Boise

Zoo Boise, our mission is to connect our community with wildlife conservation worldwide. Throughout the year, we are looking for passionate, conservation-driven volunteers to provide a fun and educational experience for our visitors. Volunteer opportunities include:

- Raising funds for conservation at the Sloth Bear and Giraffe feeding stations as a Zoo Naturalist
- Volunteering at one of our amazing annual events including Boo at the Zoo
- Sharing the value of volunteering with your pre-teen as Zoo Family Ambassadors
- Greeting, hosting and educating visitors as a Zoo Ambassador

Find out about great volunteer opportunities at the zoo by visiting [zooboise.org](http://zooboise.org).





# Facility Rentals



Jim Hall Foothills Learning Center

## BOISE DEPOT

The Boise Depot is a unique venue for weddings, parties, corporate and fundraising events. A beautiful historic Spanish-style structure, the Depot was opened in 1925 to elaborate fanfare in the capital city.

The Great Hall, a 3,542-square-foot space with a soaring multi-story atrium, once served as the building's waiting room. The original 1925 Barkalow Brothers Newsstand has been slightly restored and is featured on the west wall. With a splendid panoramic view of the Boise Front, the grounds include Platt Gardens, a lovely park with pathways, a gazebo and ponds.

The Great Hall may be reserved 365 days in advance. Maximum occupancy is 300 or 165 for sit-down events.

### Boise Depot Fees\*

#### GREAT HALL RATES

8 Hours or Fridays and Saturdays	\$1,060**
5 hours	\$655**
6 hours	\$790**
Additional hours	\$136/hr.

#### Additional Amenities with Great Hall Reservation

Bell Tower 4 hours	\$115
Bell Tower 2 hours	\$57.50
Meeting Station	\$83/hr.
North Plaza (flat rate up to 8 hrs.)	\$330
North Plaza additional hours	\$75/hr.
Platt Gardens	\$75/hr.

#### Holiday Rates

12 hours	\$2,150**
----------	-----------

#### DEPOT LIMITED EVENTS

##### Meeting Station Rental, Rehearsals or Setups

2 hours	\$272
Additional hours	\$136/hr.

\*Fees include tax.

\*\*Rentals require a \$300 refundable deposit and liability insurance.

For more information or to reserve the Depot, call 208-608-7600 or email [reserve@cityofboise.org](mailto:reserve@cityofboise.org).

## BOISE URBAN GARDEN SCHOOL (BUGS)

BUGS houses a Grade A kitchen that can be rented out for birthday parties, meetings, and other gatherings. Our outdoor space is beautiful spring through fall. Our indoor space can accommodate groups up to 20.

### FACILITY RENTAL RATES\*

Hourly	\$79.50
--------	---------

\*All fees include tax. A deposit, liability insurance and additional staff fees may be added to the rental. Alcohol is permitted with a permit and rental.

Call 208-972-8630 or email [bugs@cityofboise.org](mailto:bugs@cityofboise.org) for more information.

## DICK EARDLEY SENIOR CENTER & FORT BOISE COMMUNITY CENTER

The Dick Eardley Senior Center and Fort Boise Community Center not only provide recreational and social opportunities, but also provide room rental opportunities. When rooms aren't used for regular activities and classes, certain rooms can be rented during and after business hours.

### Dick Eardley Senior Center Fees\*

#### MONDAY-FRIDAY, 8AM-5PM

A/B Room, C Room, or Gold Room (first two hours)	\$76
--	------

#### MONDAY-FRIDAY, EVENINGS; SATURDAY-SUNDAY, ALL DAY

Entire Facility (first 4 hours)	\$920
Dining Room (first 4 hours)	\$360
A/B Room, C Room, or Gold Room (first two hours)	\$119
Additional Hours	\$59.50/hr.

For more information or to reserve a room, call 208-608-7580 or email [seniorcenter@cityofboise.org](mailto:seniorcenter@cityofboise.org). Alcohol is permitted with a permit and rental.





Quail Hollow Golf Course

### Fort Boise Community Center Fees\*

For-profit organizations/coaches must carry liability insurance or purchase through the city. Call for for-profit rental rates.

<b>ROOM</b>	<b>NON-PROFIT RENTAL RATES</b>
Gym .....	\$51.50/hr
Dance/Multi-Purpose Room .....	\$19.50/hr
Teen Center .....	\$38.75/hr

Please call for details and to check availability, 208-608-7680.

*\*All fees include tax. A deposit, liability insurance and additional staff fees may be added to the rental. Non-residents are subject to non-resident rental rates. Prices quoted are for Boise City residents. Please call for non-resident rates.*

### JIM HALL FOOTHILLS LEARNING CENTER

Situated in the heart of the Boise Foothills, the Foothills Learning Center is surrounded by nature, making it a great facility for educational programs. When the Foothills Learning Center isn't used for environmental education programs, the facility can be rented out.

The classroom can accommodate up to 25 guests while the conference room can accommodate up to 15 guests.

#### FACILITY RENTAL RATES\*

Half Day (up to 4 hours): .....	\$131.50
Full Day (4-8 hours): .....	\$262

*\*All fees include tax. A deposit, liability insurance and additional staff fees may be added to the rental. Alcohol is permitted with a permit and rental.*

For more information or to reserve a room, call 208-608-7810 or email [flc-parks@cityofboise.org](mailto:flc-parks@cityofboise.org).

### QUAIL HOLLOW GOLF COURSE

Whatever your occasion, from corporate functions to wedding receptions, celebrations of life, parties and special events, Quail Hollow is a unique venue to host your event. The Banquet and Board Rooms offer an intimate setting for any occasion. Both rooms open to a balcony overlooking Quail Hollow Golf Course and panoramic views of the Boise Foothills.

The Banquet Room is a 1,000 square-foot space that can accommodate 80 guests, 60 seated and the Board Room is a 300 square-foot space that can accommodate between 18 and 26 guests depending on the setup. All catering is provided by The Foothills Grill.

#### BANQUET ROOM RENTAL RATES\*

First 4 Hours .....	\$370 plus tax
Additional Hours .....	\$150/hr plus tax
Additional Staff .....	\$40/hr for each additional staff
Security Deposit .....	\$300
Reservation Charge Fee .....	\$50

#### BOARD ROOM RENTAL RATES\*

First 4 Hours .....	\$210 plus tax
Additional Hours .....	\$150/hr plus tax
Additional Staff .....	\$40/hr for each additional staff
Security Deposit .....	\$300
Reservation Charge Fee .....	\$50

*All prices subject to change without notice.*

*\*Please contact our event coordinator for a more detailed cost breakdown.*

For more information or to reserve a room, call 208-972-8590 or email [qhgolfevent@cityofboise.org](mailto:qhgolfevent@cityofboise.org).

# Locations



Zoo Boise

## **ART CENTER**

700 Robbins Rd  
208-608-7680  
activities@cityofboise.org

## **BOISE COMMUNITY FORESTRY**

4969 Dorman St  
208-608-7700  
forestryinfo@cityofboise.org

## **BOISE DEPOT**

2603 Eastover Terrace  
208-608-7644  
reserve@cityofboise.org

## **BOISE URBAN GARDEN SCHOOL**

*(BUGS)*  
2995 N Five Mile Rd  
208-972-8630  
cityofboise.org/bee

## **BOISE WATERSHED ENVIRONMENTAL EDUCATION CENTER**

*(Boise WaterShed, BWS)*  
11818 W Joplin Rd  
208-608-7300  
bw@cityofboise.org  
boisewatershed.org

## **DICK EARDLEY SENIOR CENTER**

*(Dick Eardley SC)*  
690 Robbins Rd  
208-608-7580  
seniorcenter@cityofboise.org  
cityofboise.org/senior-center

## **FORT BOISE COMMUNITY CENTER**

*(Fort Boise CC)*  
700 Robbins Rd  
208-608-7680  
activities@cityofboise.org  
cityofboise.org/fort-boise

M-F: 8AM-9PM,  
Sa: 9AM-3PM, Su: 10AM-5PM  
Closed weekends May-Sept.

## **GRACE JORDAN COMMUNITY CENTER**

*(Grace Jordan CC)*  
6411 W Fairfield Ave  
208-854-4910

## **HILLCREST KID CITY**

2045 S Pond St  
208-391-9792

## **IDAHO ICEWORLD**

7072 S Eisenman Rd  
208-608-7716  
iiwinfo@cityofboise.org  
idahoiceworld.com

## **JEFFERSON KID CITY**

200 S Latah St  
208-513-0372

## **JIM HALL FOOTHILLS LEARNING CENTER**

*(Foothills LC)*  
3188 Sunset Peak Rd  
208-608-7810  
flc-parks@cityofboise.org  
cityofboise.org/bee

## **MCMILLAN KID CITY**

10901 W McMillan Rd  
208-391-9238

## **MORLEY NELSON COMMUNITY CENTER**

*(Morley Nelson CC)*  
7701 W Northview St  
208-854-4917

## **PARKS AND RECREATION ADMINISTRATION**

1104 Royal Blvd  
208-608-7600  
bpr@cityofboise.org  
cityofboise.org/parks

M-F: 8AM-5PM, closed legal holidays

## **QUAIL HOLLOW GOLF COURSE**

*(Quail Hollow GC)*  
4720 N 36th St  
208-972-8590  
quailhollowboise.com

## **TAFT KID CITY**

3722 W Anderson St  
208-473-1518

## **WARM SPRINGS GOLF COURSE**

*(Warm Springs GC)*  
2495 Warm Springs Ave  
208-972-8600  
warmspringsgolfcourse.com

## **WHITNEY COMMUNITY CENTER**

*(Whitney CC)*  
1609 S Owyhee St  
208-854-6625

## **WHITTIER KID CITY**

225 N 29th St  
208-472-2073

## **ZOO BOISE**

355 Julia Davis Dr  
208-608-7760  
zooboise.org  
10AM-5PM Sept-May  
9AM-5PM June-Aug

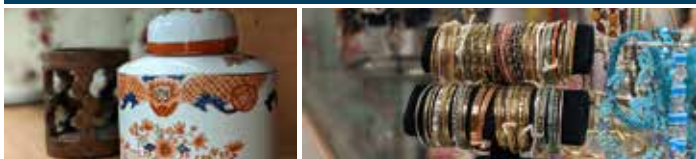




## SENIOR CENTER THRIFT STORE

The prices can't be beat! Check out our selection of clothing, accessories, housewares, home décor and more.

Donations benefit local seniors.



**DICK EARDLEY SENIOR CENTER**  
 Shop Monday-Friday | 10 a.m. - 2 p.m.  
 690 Robbins Rd.

**BOOK NOW!**

2023  
 QUAIL HOLLOW

# Holiday Parties

208-972-8590 | TTY: 1-800-377-3529  
 QHGolfEvent@cityofboise.org

---

QUAILHOLLOWBOISE.COM



# GET A LIBRARY CARD!

Borrow or download close to 600,000 titles!

- Books
- Ebooks
- Emagazines
- Music
- CDs
- DVDs
- Newspapers
- Video Games
- 100+ digital applications and resources
- Stream videos, make art projects, learn a new language, and much more by accessing over 100 digital applications and resources.

Stay up-to-date!

Subscribe to the Boise Public Library Newsletter!  
[BoisePublicLibrary.org/Newsletter](http://BoisePublicLibrary.org/Newsletter)





# Park Reservations



Ann Morrison Park

PAVILIONS	RESIDENT	NON-RESIDENT	LOCATIONS	ADDITIONAL INFORMATION
HALF DAY 9AM-2PM; 3PM-8PM	\$140	\$217	Ann Morrison 'Old Timers' Pavilion, Esther Simplot West and Central Pavilions, Julia Davis Boise, Agriculture and Celebration Pavilions, Veterans Memorial Pavilion	<ul style="list-style-type: none"> <li>• These sites can be reserved Jan. 1</li> <li>• Amplified Sound can be added when reserving one of these sites</li> </ul>
FULL DAY 9AM-8PM	\$275	\$426.25		
SHELTERS	RESIDENT	NON-RESIDENT	LOCATIONS	ADDITIONAL INFORMATION
HALF DAY 9AM-2PM; 3PM-8PM	\$95	\$147.25	Borah, Camel's Back, Cassia, Eagle Rock, Esther Simplot Pier, Ivywild, Kristin Armstrong Municipal, Marianne Williams, Phillippi, Veterans Memorial Picnic, Winstead Parks	<ul style="list-style-type: none"> <li>• Most sites can be reserved 365 days in advance</li> <li>• Esther Simplot Pier &amp; Veterans Memorial Picnic can be reserved Jan. 1</li> <li>• Discount applies to Boise City Residents, excludes holidays</li> </ul>
FULL DAY 9AM-8PM	\$185	\$286.75		
DISCOUNTED RATE MON-THURS 9AM-2PM	\$70			
GARDENS	RESIDENT	NON-RESIDENT	LOCATIONS	ADDITIONAL INFORMATION
HALF DAY 9AM-2PM; 3PM-8PM	\$110	\$170.50	C.W. Moore, Esther Simplot Friendship Island, Julia Davis Rose Garden, Kathryn Albertson Eyrie and Rookery	<ul style="list-style-type: none"> <li>• These sites are for formal ceremonies</li> <li>• Receptions aren't permitted but a beer/wine permit can be purchased for a toast</li> </ul>
FULL DAY 9AM-8PM	\$215	\$333.25		

## PARK FEES

Payment is required to finalize a reservation. All major credit cards, checks, cash, and money orders are accepted. Rates include sales tax except for gardens/gazebos.

## MISCELLANEOUS PERMITS

AMPLIFIED SOUND for private events .....\$30  
 BEER/WINE PERMIT ..... \$10  
 INFLATABLE PERMIT..... No charge  
*(Must apply for permit and choose from approved list of vendors.)*

## REFUNDS & CANCELLATIONS

Refunds are only provided if the cancellations are made prior to ten (10) calendar days of the reservation. A \$15 processing fee is collected for any cancellation. An event cannot be rescheduled within ten (10) calendar days of the reservation. **Refunds or rescheduling is not granted due to poor weather conditions or acts of nature.**

## SPECIAL EVENTS

If you are interested in having a special event in a city park, please call 208-608-7600 or email [parksspecialevents@cityofboise.org](mailto:parksspecialevents@cityofboise.org).

## CONTACT US

PHONE: 208-608-7600

EMAIL: [reserve@cityofboise.org](mailto:reserve@cityofboise.org)

WALK IN: Boise Parks and Recreation Administration Office, 1104 Royal Blvd, Boise, ID 83706, 8AM-5PM, Monday-Friday.

Office is closed all legal holidays.

# 4 Ways to Register

**REGISTRATION  
BEGINS 7AM ON:**

**AUGUST 15  
FOR RESIDENTS**

**AUGUST 17  
FOR NON-RESIDENTS**

- 1. ONLINE:** cityofboise.org/parks.
- 2. MAIL-IN:** Check or money order. Make checks payable to: City of Boise.  
Mail to Fort Boise Community Center, **700 Robbins Rd**, Boise ID 83702.
- 3. WALK-IN:** Fort Boise Community Center, **700 Robbins Rd**, Boise ID 83702.  
Cash, credit/debit cards, check or money order.
- 4. PHONE-IN:** Credit cards only: **208-608-7680** or **1-800-377-3529** (TTY).

## PAYMENT INFORMATION

Full payment is required prior to enrollment. Registrations cannot be accepted from participants with past due balances. Do not mail cash. Returned checks are subject to a \$20 handling fee.

## REFUND & CANCELLATION POLICY

We depend on your enrollment for a successful class! Please plan your schedule carefully. Classes which do not meet minimum enrollment are subject to cancellation. In the case of a cancellation, please contact Fort Boise Community Center at **208-608-7680**. Refunds are issued:

- In full if the class or program is canceled by Boise Parks and Recreation.
- Minus a \$15 per household member processing fee if you cancel **at least ten calendar days before the starting date of the class**. Choose from these three options:
  1. Transfer to another class
  2. Credit your account
  3. Receive a refund. For check refunds, please allow 3-4 weeks for processing.

Refunds and transfers are not issued:

- When cancellations or transfers are requested less than ten calendar days before the starting date of the class.
- If the fee paid is less than the \$15 processing fee.
- For team fees after registration ends.
- For all team sports player fees.

## WHO IS A RESIDENT?

Boise residents live within the city limits and pay Boise city taxes. The boundaries that the U.S. Post Office uses and those that determine the city limits are not the same. Even though you may have a Boise mailing address, you may not live within the Boise City limits. Questions about residency? Please call customer service staff at **208-608-7680** or **208-608-7600**.

## NON-RESIDENT POLICY

Boise residents directly contribute to the operations of Boise Parks and Recreation Department's programs and services by payment of their property taxes. The Fair-Share Policy (Non-resident Fee) allocates an additional fee to non-resident users so that they also contribute, on an equitable basis, to the overall financing of the department's operations.

## SCHOLARSHIP INFORMATION

- Partial scholarships are available for youth, seniors and adults with disabilities. Call **208-608-7680** for details or download an application form from [cityofboise.org/scholarships](http://cityofboise.org/scholarships).
- You can help ensure all young people in Boise have the same opportunity to participate by adding \$1, \$5, \$10 or more to your registration payment. Donations are tax deductible.

## ACCOMMODATION

We support the Americans with Disabilities Act and encourage participation by everyone. If you require modifications to participate in our programs or use our recreation facilities, please call **208-608-7687** or **1-800-377-3529** (TTY) or check the appropriate box on your registration form. At least three weeks notification to class date is required.

## PERSONAL RELEASE STATEMENT

**When you register for a recreation class with the City of Boise, this Personal Release Statement is implied:**

*I understand that the registered activities and services may have an element of hazard or inherent danger and I take full responsibility for my actions and physical condition. I agree to indemnify and hold harmless the City of Boise and its employees from any liability loss, cost or expense (including attorney's fees, medical and ambulance costs) that I may incur while participating in the recreation activities. I give my consent to use any photographs or videotape taken of me in future promotional or marketing materials.*

## REGISTRATION FORM

(Please print clearly, thank you!)

Name (Parent/Guardian/Adult Participant)	Email	Phone ( )	
Mailing Address	City	State	Zip

Please check here if you need a modification because of a disability to effectively participate in an activity.

ACTIVITY NUMBER	ACTIVITY NAME	PARTICIPANT NAME	BIRTH DATE (MM/DD/YR)	FEE

YES I would like to donate to Boise Parks and Recreation Accessibility Scholarship Program: For adults with disabilities \$ \_\_\_\_\_  
To help a child in need \$ \_\_\_\_\_  
**TOTAL PAYMENT ENCLOSED \$ \_\_\_\_\_**

I have read and agree to the **PERSONAL RELEASE STATEMENT** above.

Parent/Guardian/Adult Participant Signature \_\_\_\_\_ Date \_\_\_\_\_



**CITY of BOISE**  
PARKS AND RECREATION  
DEPARTMENT  
Fort Boise Community Center  
700 Robbins Rd. | Boise, Idaho 83706-2840



# FALL IN LOVE

## WITH CATS ALL YEAR LONG!

Open daily



### ZOOBOISE

Conservation • Education • Recreation

[zooboise.org](http://zooboise.org)



Part of every zoo visit helps  
protect animals in the wild!



PARKS AND RECREATION



**IDAHO  
FORD STORES**

Exclusive Automotive Sponsor